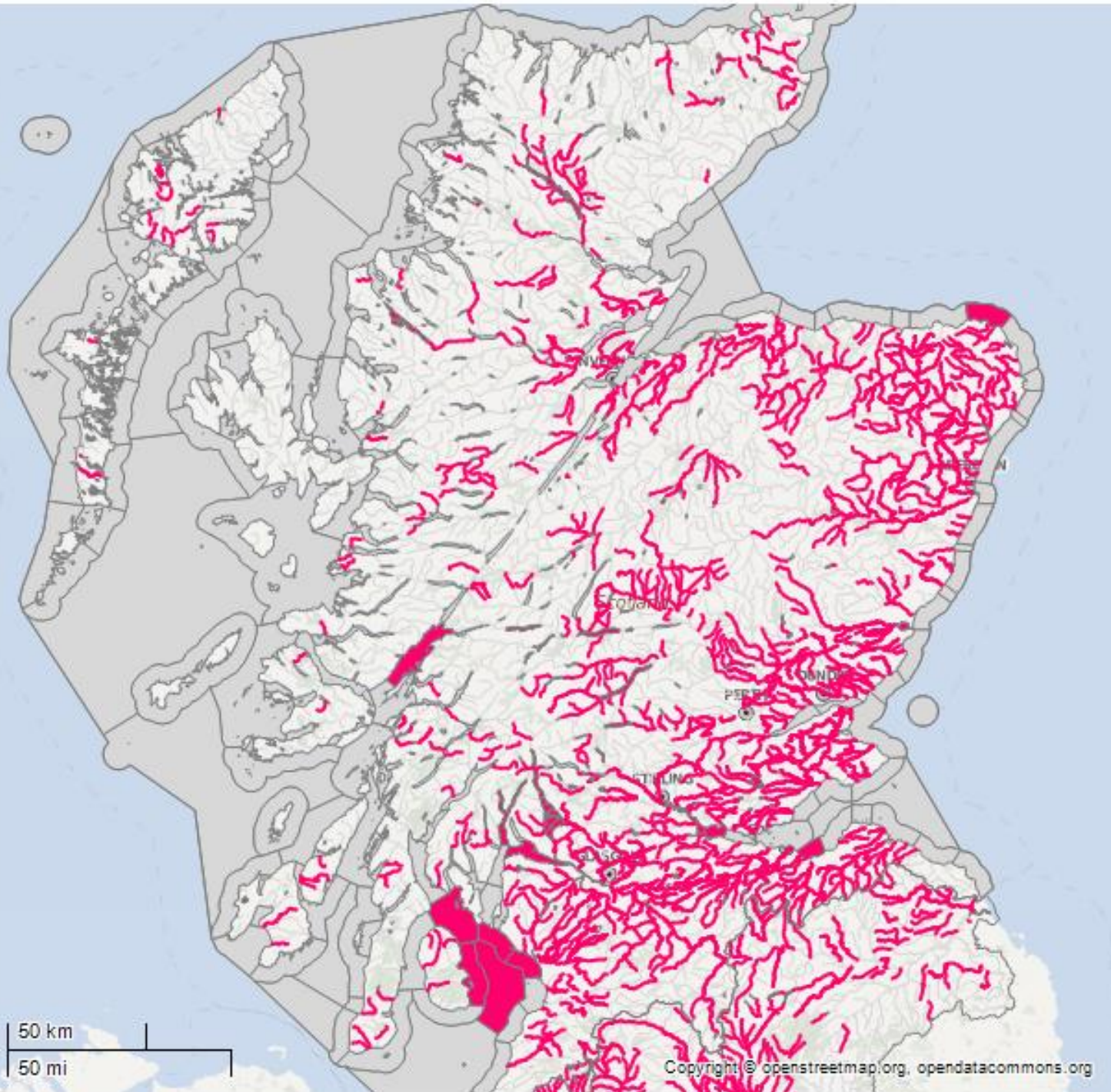


Managing pressures in the UK

Peter Pollard





Only a few voluntary river basin planning initiatives in 1990s

Sustainable urban drainage



Score card – urban diffuse pollution management in 1990s		
Problem targeting	6/10	<ul style="list-style-type: none"> ◆ No corporate direction on priorities
Ownership	8/10	<ul style="list-style-type: none"> ◆ Highly motivated individuals ◆ Limited at corporate level
Technical solution	4/10	<ul style="list-style-type: none"> ◆ Limited industry engagement ◆ No design guidance ◆ Limited testing of solution
Implementation solution	3/10	<ul style="list-style-type: none"> ◆ 1 of 32 local development plans ◆ Responsibility for maintenance unresolved



SCOTTISH
GOVERNMENT

- Plan approval
- Public budget
- Regulatory framework



Scottish Environment
Protection Agency

Buidheann Dion
Àrainneachd na h-Alba

- Plan preparation
- Monitoring & assessment
- Environmental regulation
- Funding & technical support

Scottish
Water

- Municipal waste water
- Drinking water supply
- Urban drainage

**Local
government
x 32**

- Land use planning
- Building control
- Flood schemes



Prioritising action

Scottish Water



Improvements to
waste water treatment
& collection

£65 to £70 million per
year (population ~ 5.5
million)

+ maintenance costs



Score card – municipal waste water

Problem targeting	8/10	<ul style="list-style-type: none">◆ Prioritisation via river basin planning◆ Some gaps in knowledge of impacts
Ownership	9/10	<ul style="list-style-type: none">◆ Objectives approved by Ministers◆ Scottish Water duty to deliver
Technical solution	6/10	<ul style="list-style-type: none">◆ 6 year study programme◆ SEPA & economic regulator oversight◆ Scope for more recovery of energy/nutrients◆ Scope for more source control solutions
Implementation solution	8/10	<ul style="list-style-type: none">◆ Scottish Water responsible for build & maintenance◆ SEPA independent regulator◆ Scope for improving framework for control at source





2009 to 2015

- 5800 km watercourse assessed
- 5200 bad practices



- 450 workshops & other events
- 3200 farm visits
- 11 people full time

- 1st visit, 37% farms with good practices
- 2nd visit, 86% farms moving to good practices

Score card – rural diffuse pollution

Problem targeting	8/10	<ul style="list-style-type: none">◆ Prioritisation via river basin planning◆ Some gaps in knowledge of impacts
Ownership	9/10	<ul style="list-style-type: none">◆ Objectives approved by Ministers◆ SEPA led (dedicated team)◆ Farming leaders on advisory group
Technical solution	8/10	<ul style="list-style-type: none">◆ Based on established codes of practice◆ Modelled effects but too early to test◆ Farmers able to work out detailed solutions to suit their farms
Implementation solution	8/10	<ul style="list-style-type: none">◆ Regulatory framework of general binding rules with SEPA regulator◆ Advice and awareness raising◆ Funding for action beyond minimum◆ Scope for improved efficiency

