




Organisational set-up for the water data management and electronic reporting in Romania

Elena TUCHIU – National Administration Romanian Waters

**15th International Conference "Europe-INBO 2017"
Dublin - Ireland - 20 - 23 September 2017**

Water data management organization and electronic reporting

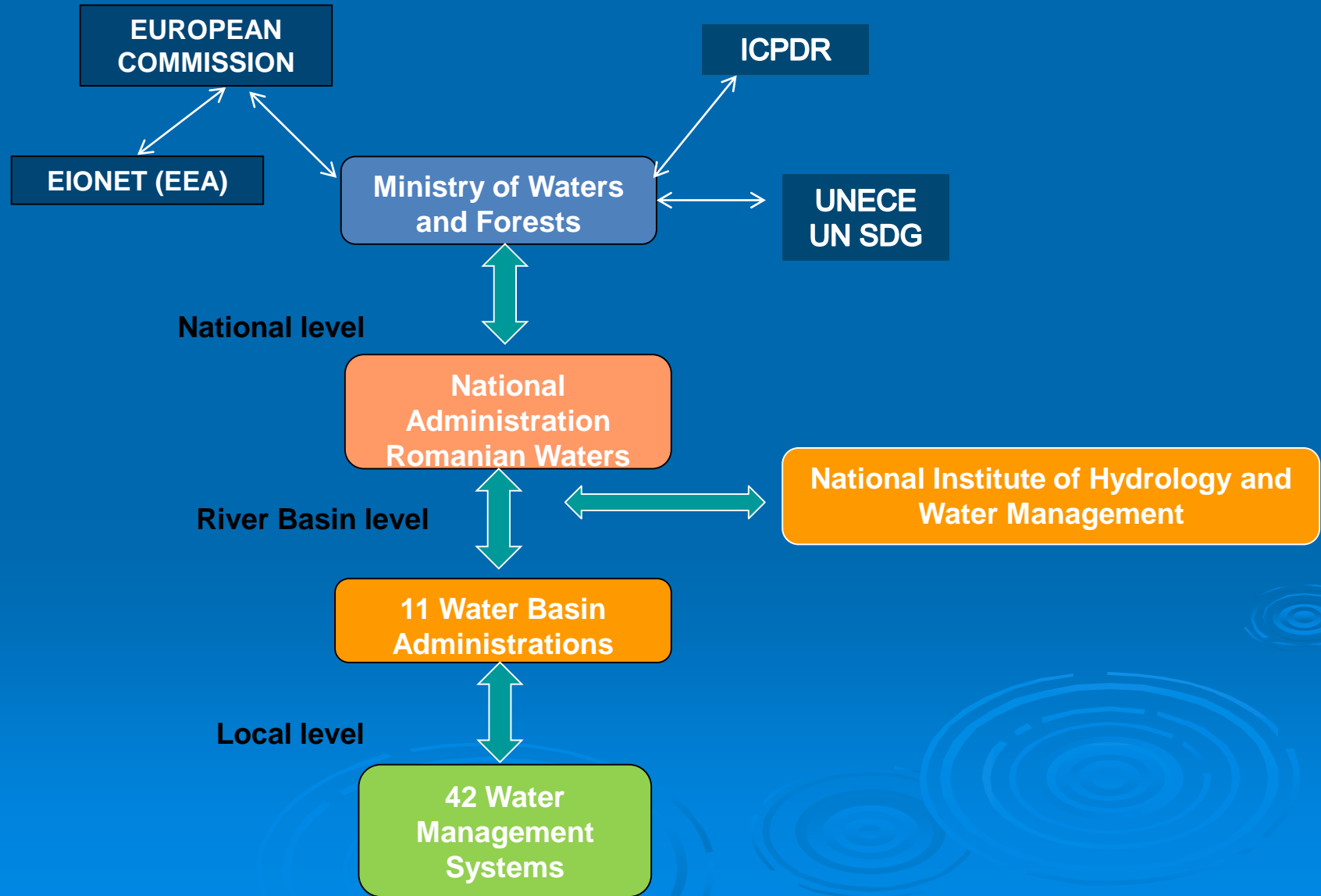
Content

- Organisation and institutional framework for water data management in Romania
 - Water Information Management System in Romania (WIMS)
 - Experience in electronic reporting activities and lessons learned
 - Development of WIMS
- 
- The background of the slide is a solid blue color. In the bottom right corner, there are several concentric white circles of varying sizes, resembling ripples on water, which serve as a decorative element.

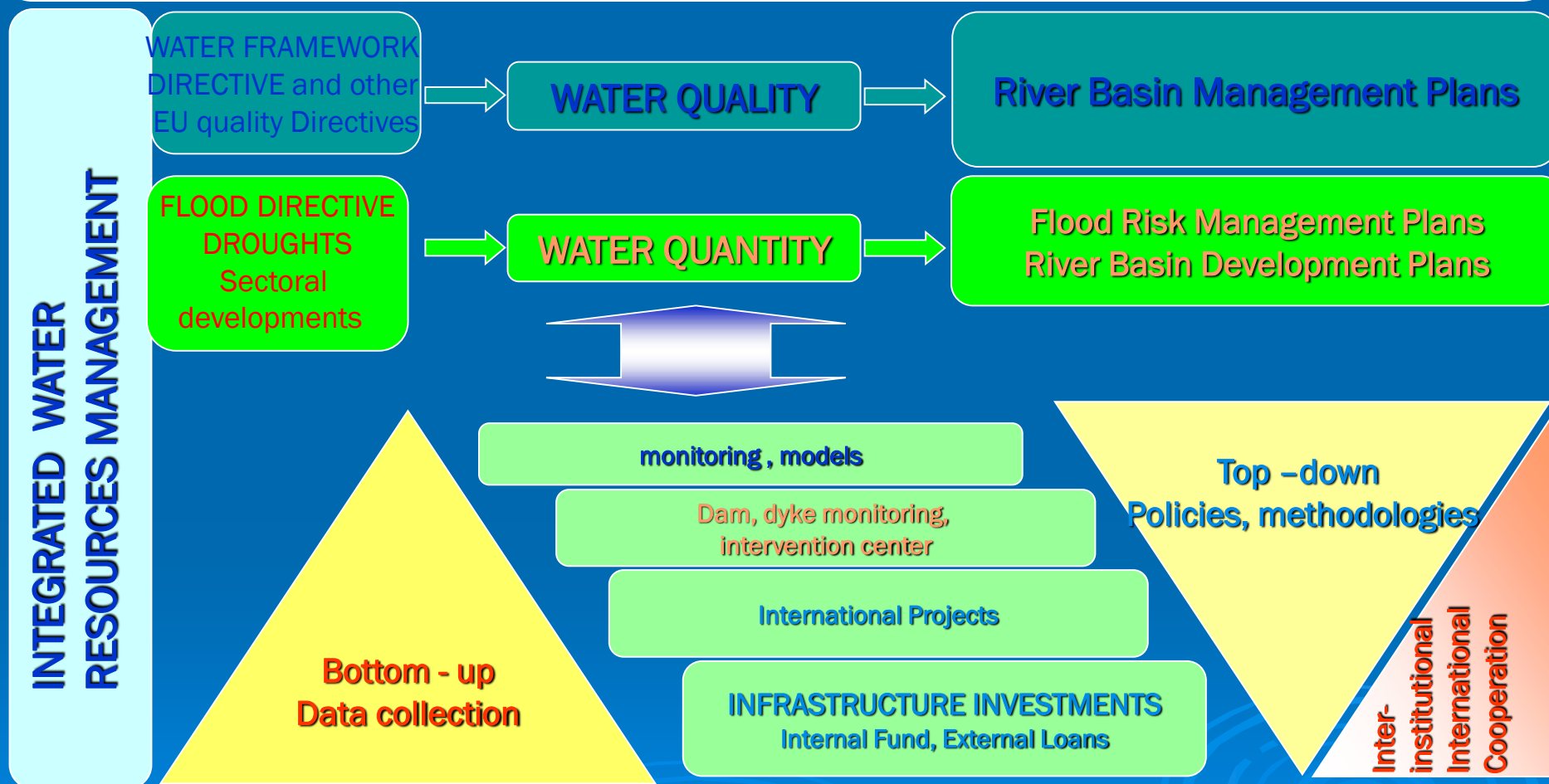


This ICPRD product is based on national information provided by the Contracting Parties to the ICPRD (AT, BA, BG, CZ, DE, HR, HU, MD, RO, RS, SI, SK, UA) and CH, except for the following: EuroGlobalMap v2.1 from EuroGeographics was used for national borders of AT, CZ, DE, HR, HU, MD, RO, SI, SK and UA; ESRI data was used for national borders of AL, ME, MK; Shuttle Radar Topography Mission (SRTM) from USGS Seamless Data Distribution System was used as topographic layer; data from the European Commission (Joint Research Center) was used for the outer border of the DRBD of AL, IT, ME and PL.

Informational flow for water management data in Romania



Policies and data management



Reporting and dissemination of data

Water Information Management System (WIMS) contributes to fulfill the **requirements related to:**

➤ **Reporting obligations:**

- European Commission – WISE reporting (WFD, FD, UWWTD, MSFD, Nitrate Directive, etc.)
- EEA
- ICPDR
- UNECE

➤ **Internal use:**

- emission controls
- permit process
- preparation of information for interested or general public

➤ **Public access:**

- Ministry of Waters and Forests web-page (www.ape-paduri.ro)
- NARW (including Water Basin Administrations) web-page (www.rowater.ro)
- NIHWM web-page (www.inhga.ro/)
- Articles, papers, synthesis, projects results.



Romanian contribution to the ICPDR database

DanubeGIS platform:

- supports the ICPDR in its tasks related to spatial data and other information
- organises data collection and process information to serve to the elaboration of Danube basin–wide reports, plans
- sharing and exchange information and good practices
- is open to public users – providing access to data and maps for the whole Danube Basin, according to an agreed data policy
 - scientific community can use the information for research projects
 - interested/general public are able to access certain data and information.

The screenshot displays the DanubeGIS platform interface. The top section shows a map titled "DRBMP 2015 - Map 03: Surface Water Bodies" with a 200 km scale bar. The left sidebar contains a "Report" menu with options like "Map 01: DRBD Overview", "Map 02: Ecoregions", "Map 03: Surface Water Bodies", "Map 04: Transboundary Groundwater Bodies", "Map 05: Urban Wastewater Treatment", "Map 06: Main Industrial Facilities", "Map 07a: Nitrogen Pollution - Total", and "Map 07b: Nitrogen Pollution - Rural".

The bottom section shows the "Datasets Overview: Latest update" table, which lists various datasets and their update dates across different countries (AT, BA, BG, CZ, HR, DE, HU, MD, ME, RO, RS, SK, SI, UA).

TEMPLATE NAME	AT	BA	BG	CZ	HR	DE	HU	MD	ME	RO	RS	SK	SI	UA
AdminBound	2009-09-07	2014-01-28	2007-12-10	2007-08-26	2009-04-17	2007-09-12	2008-10-31	2015-02-12		2013-08-25	2009-12-05	2009-06-05	2007-06-01	2015-03-08
APSFRR_a	NR				NR		2014-04-17	NR		2014-03-18	NA		NR	
APSFRR_j	2011-11-03		2013-10-07	2013-01-25	NR	2015-09-25	NA	NR		2011-11-23	2014-04-15		NR	2011-10-21
APSFRR_g	2011-11-03	2011-10-04	2013-10-07		2013-08-27		2014-04-17	NR			2014-04-15	2013-08-17	2013-02-04	2011-10-25
ARS	2015-10-30	2017-08-18	2017-01-02	2015-09-18	2016-03-18	2016-11-28	2015-11-04	2015-11-02		2016-12-20	2017-08-16	2017-07-03		2016-03-24
Catchment		2014-01-30	2009-03-30	2008-10-29	2008-12-22		2016-10-28	NR		2010-08-10	2009-08-20	2015-04-14		2015-03-11
City_a	2009-09-07	NA	2008-01-21	2008-10-29	2014-03-21	2017-06-27	2015-10-29	NR	NR	2013-09-18	2009-06-28	2009-06-19	NR	2015-03-11
City_p	2017-06-26	2013-10-08	2009-08-31	2008-10-29	2014-03-21	2017-06-27	2015-01-18	2015-11-17	2013-09-10	2015-02-26	2009-12-14	2017-06-26	2015-03-11	
Compauth	2009-09-07	2009-07-28	2008-12-22	2008-11-07	2014-03-07	2014-02-07	2015-10-28	2015-02-12	2015-11-17	2014-02-13	2009-08-14	2009-08-20	2015-04-07	2015-03-11
CS	2015-10-30			2015-09-18		2016-02-15	2015-09-18					2017-07-08		2016-03-24
CWBody	NA	NA	NA	NA	NA	NA	NA	NA	NA	2015-10-30	NA	NA	NA	2015-03-19
Ecoreg	2009-08-14	2014-06-06	2014-02-24	2014-04-29	2008-10-31	2015-09-24	2014-01-24	2015-02-12	2015-11-18	2014-06-17	2009-01-14	2009-11-08	2015-04-07	2015-03-11
FESeg	2014-08-13					2014-05-27	2014-07-18	NR			2014-05-20	2014-05-11	NR	
FProject_j	2015-10-30		2015-04-13	NR	2015-04-15		2015-11-06	2015-02-12	NR	NA	2015-10-27	NA	NR	NR
FProject_g	NR		2015-04-13	NR	2015-04-15	2015-11-30	NA	2015-02-12	NR	2015-04-15	2015-10-27	UA	2015-04-07	2015-03-12
FloodHazardArea_a	2013-09-23		2013-11-07	2014-04-29	2014-11-11	2014-10-10	2015-11-04	UA		2015-11-10	2014-10-15	NR	NR	
FloodHazardArea_j	2013-09-23		NR	NR	NR	2014-10-10	NA	UA		2015-11-09	2014-10-15	NR	NR	
FloodHazardArea_g	2013-09-23	2014-10-15	2013-11-07	2014-04-29	2014-11-11	2014-10-10	2015-11-04	UA		2015-11-09	2014-10-15	2014-12-12	2015-04-07	

WISE - WFD Reporting

Lessons learned

- ✓ Long time preparation and development for reporting process;
- ✓ Codification of all the elements is necessary;
- ✓ Collection and dissemination of data: top - down and bottom - up approach;
- ✓ National content database - integration and correlation with other international requirements;
- ✓ Developing, maintaining and updating process of database needs special resources (human, technical, informational);
- ✓ Streamlining of reporting and avoiding double reporting;
- ✓ Connection of relevant databases: database on emissions, SIIF-UWWTD;
- ✓ Correlation with key aspects from other domains (MSFD, FD, Habitats and Birds Directives, INSPIRE, etc.);
- ✓ Development of QA/QC tools.

WISE - WFD Reporting

Main difficulties :

- data collection from local level and stakeholders;
- to understand the reporting requirements: gml formats, some INSPIRE requirements, etc.;
- to ensure the integrative approach (ex. RBMP_FRMP, Habitats and Species Directives)

EEA | EIONET Central Data Repository

SERVICES | REPORTNET | TOOLS | TOPICS (ETCS)

You are here: Eionet > CDR > General Help > Water Framework Directive > Water Framework...

Navigation

- Search by obligation
- Search XML files
- Search for feedback
- Global workload
- Notifications
- Help

Account Services

I have

- lost my password

Page updated on June 23rd 2016 (v6.0.6 published; changelog)

Water Framework Directive reporting resources

Support files for 2016 reporting on River Basin Management Plans

Helpdesk

All enquiries can be directed to wfd_helpdesk@eionet.europa.eu

Helpdesk log

A document log below will be maintained through the course of the period planned in 2015 to ensure issues raised and responses are made available to all member states. Before submitting comments or questions to the Helpdesk please check whether they have already been identified and replied to in the log.

- Helpdesk log (updated on 18.02.2016)

Additional document log is provided with the activity on helpdesk registered during the testing phase.

- Helpdesk log v6.0.1 to v6.0.2
- Helpdesk log v5.0 to v6.0 - Testing phase

Guidance documents

After the endorsement at the 'Water Directors' meeting in Crete (June 2014) of the WFD Reporting Guidance 2016, the document underwent a thorough coherence and consistency check.

- WFD Reporting Guidance 2016 (version 6.0.6 of 26th April 2016)

Logout (current) | A |

EEA | EIONET Central Data Repository

SERVICES | REPORTNET | TOOLS | TOPICS (ETCS)

You are here: Eionet > CDR > Romania > European Union (EU) obligations > Water Framework Directive: River Basin Management Plans - 2016 Reporting

Services

- Search by obligation
- Search XML files
- Search for feedback
- Global workload
- Notifications
- Help

Account Services

I have

- lost my password

Note

Subscribe to receive notifications if you want to stay updated about events in this site

Document last modified 2015/11/27. Legal notice

Overview | Task list | Edit properties | List of reporters

Water Framework Directive: River Basin Management Plans - 2016 Reporting

Obligation(s) Water Framework Directive - River Basin Management Plans - 2016 Reporting

Envelopes and subcollections

Obligation(s)	Name	Date	Size
1. RBMP, PoM and background documents		27 Dec 2016	
2. National spatial data		12 Dec 2016	
3. National FRMP			
4. River Bas			

Cut | Copy | Delete

EIONET Central Data Repository

SERVICES | REPORTNET | TOOLS | TOPICS (ETCS)

You are here: Eionet > CDR > Romania > European Union (EU) obligations > Water Framework Directive: River Basin Management Plans - 2016 Reporting > 1. RBMP, PoM and background documents > 20160322

Services

- Search by obligation
- Search XML files
- Search for feedback
- Global workload
- Notifications
- Help

Account Services

I have

- lost my password

Note

Subscribe to receive notifications if you want to stay updated about events in this site

Overview | Edit properties | History

20160322

Description

Obligation(s) Water Framework Directive - River Basin Management Plans - 2016 Reporting

Period - Whole Year

Coverage Romania

Reported 13 Dec 2016 13:20

Status Envelope is complete

Note

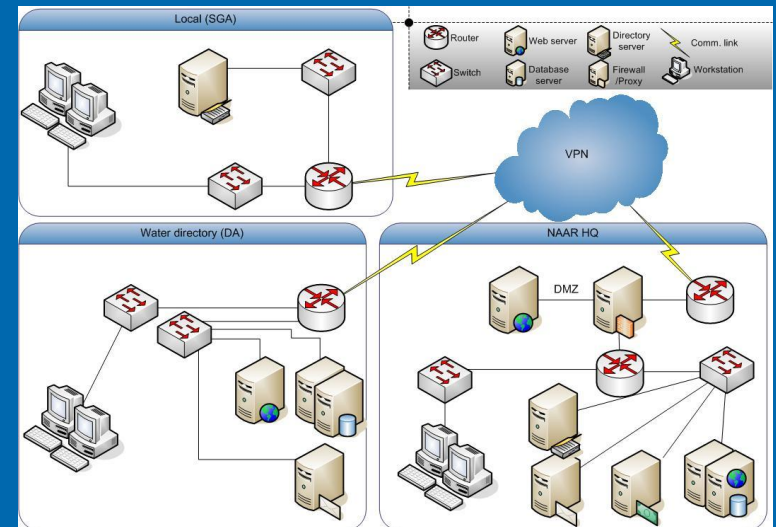
If you want to stay updated about events in this envelope [Subscribe to receive notifications](#) for this country and the current default(s)

Files in this envelope

File	Size	Date
1 Actualizare studiul planului amenajare b-h.pdf	14.4 MB	05 Dec 2016
2 Exemplu 4.5_ADA_Agrii.docx	20.1 KB	05 Dec 2016
3 Exemplu 4.5_ADA_Renat.docx	24.6 KB	05 Dec 2016
4 Exemplu 4.5_ADA_Oh.docx	20.4 KB	05 Dec 2016
5 Inventar_EEP_substante_prioritare_mediu_aveite.doc	456 KB	05 Dec 2016
6 Metodologie_analiza_cost_beneficiu.pdf	1.56 MB	05 Dec 2016
7 Metodologie_analiza_cost_eficienta.pdf	79.8 KB	05 Dec 2016
8 Metodologie_costuri_de_mediu.pdf	692 KB	05 Dec 2016
9 Metodologie_evaluare_costuri_POM_2009-2015.doc	348 KB	05 Dec 2016
10 Metodologie_evaluare_costuri_POM_2016-2021.doc	1.57 MB	05 Dec 2016
11 Metodologie_interdependenta_CA_subterane.pdf	7.59 MB	05 Dec 2016
12 Planul_National_de_Management_actualizat	27.0 MB	13 Dec 2016

Continuous and sustainable development of the water data management

- Improvement and development of WIMS
- Assuring the stability of the system (data feeding, human and informational resources)
- Development an integrated connection with the national INSPIRE database, SIIF-UWWTD, other environmental data
- Assuring the compliance with the requirements of the INSPIRE Directive



❖ INSPIRE: Theme I.8 – Hydrography :

- started necessary steps to develop the infrastructure (Web Geoportal)
- created Metadata and Spatial Data files.

THANK YOU !

