



The Water Guardians Project

World Water Forum
March, the 24th 2022



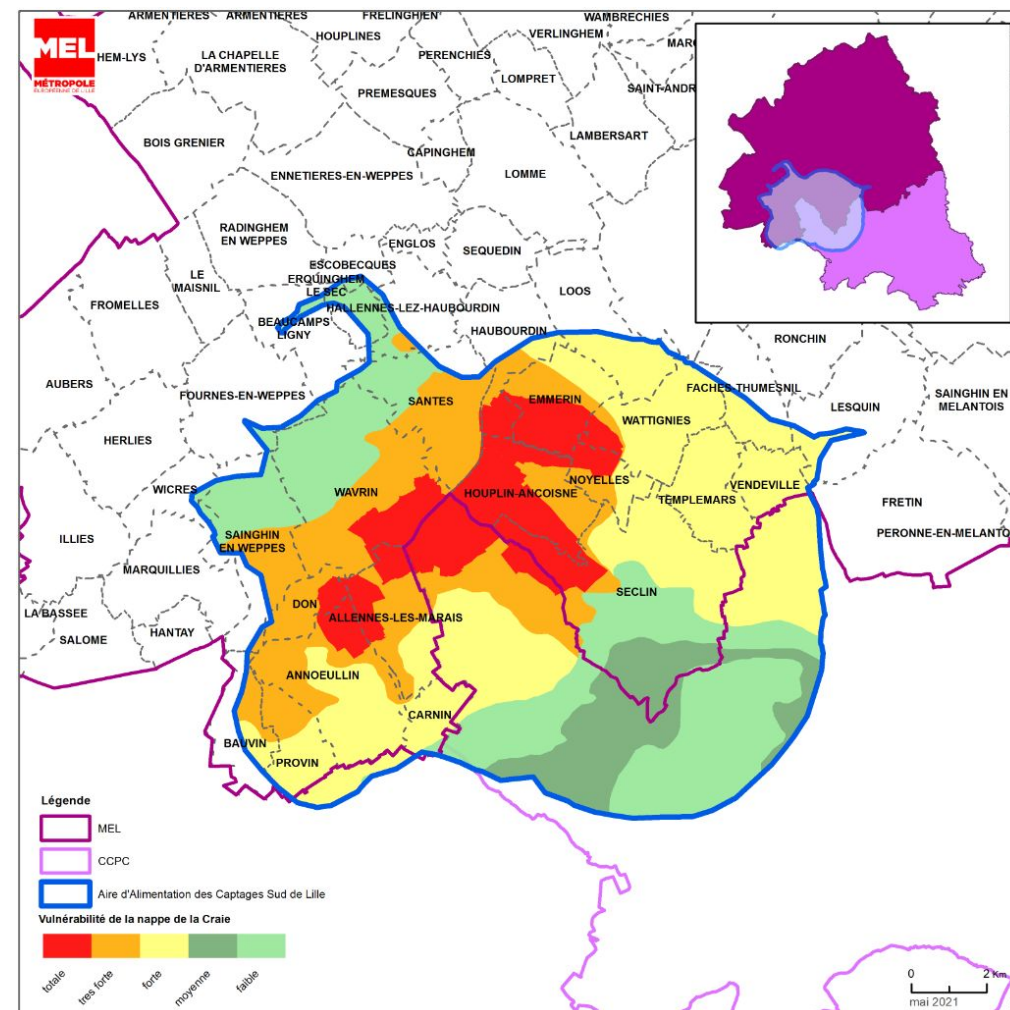
An essential but very fragile chalk groundwater table



MEL : European Metropole of Lille - FRANCE

- 1,2 millions inhabitants
- 95 municipalities

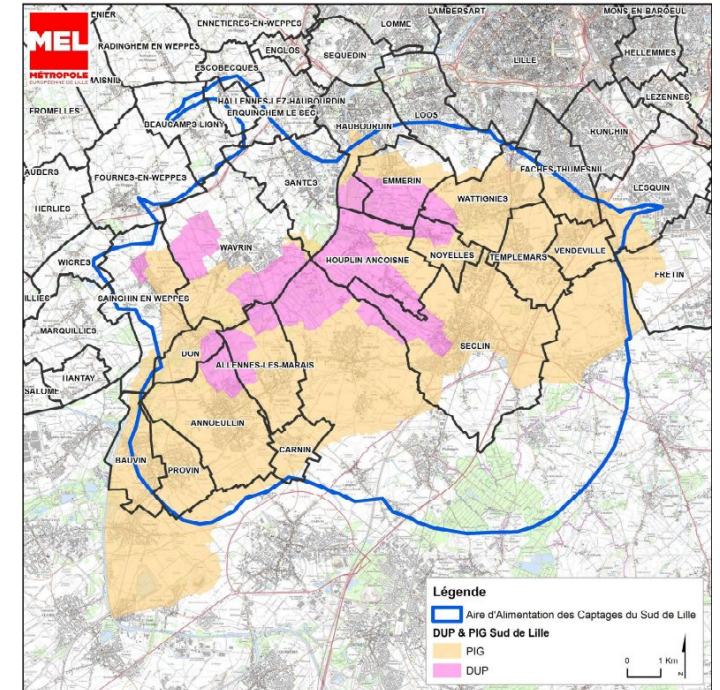
- **40% of the drinking water supply of Lille Metropole**
- **Water catchment area: 26 municipalities, 19% of the Metropolitan earea, 158 000 inhabitants**
- A low groundwater table, with a thin geological cover and **very sensitive to pollutions and climate change**
- **Threat of water shortages and contaminations**



Climate change and water protection



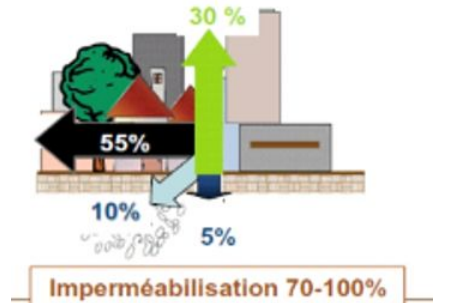
- **Late 90's** : First prescriptive protection perimeter
- **2007** : Strong **compulsory** protection in a restrictive area : accidental and ponctual contaminations
- **2014** : Whole water catchment area : **Contractual** protection and prevention of anthropic non point-source pollution



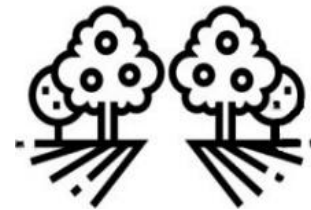
A territorial Portray : a recent faster artificialised area



Land waterproofing



up to 5 times less water
to the ground water table



57% natural and
agricultural land



43% artificialised
land



25% land waterproofing

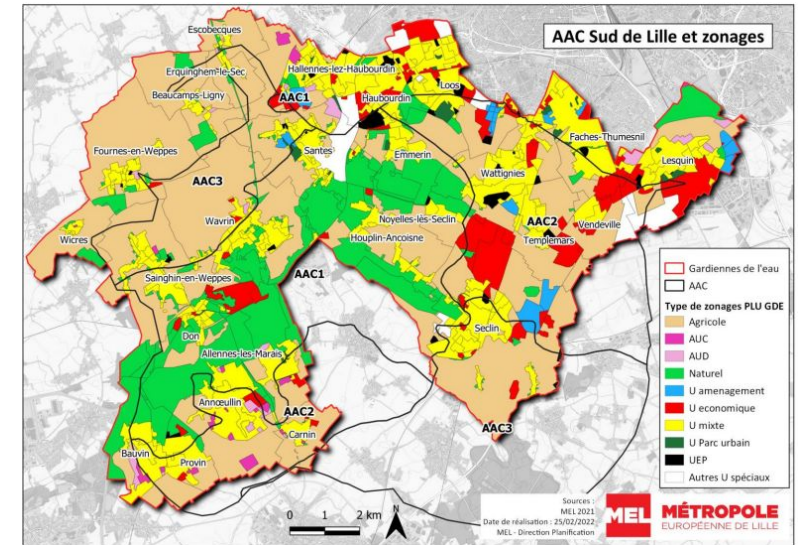
How to turn a constraint into an opportunity ?



Limiting impermeabilisation
making easier infiltration of rainwater

Zero urban extension
in local urban regulation (-263 ha of urban buildable area)
Encouraging urban renewal

An innovant territorial project
all local politics of land planning and development
towards water and environmental protection



**AMBITION : PRESERVE and ENHANCE
drinking water resource**

QUANTITY

- Minimize artificialization
- Increase infiltration

QUALITY

- Increase quality of discharges
- Reduce pollution sources

ELABORATION OF AN OVERAL STRATEGY

**PRESERVE / IMPROVE
Water resource**

DEVELOP

The potential of the territory

LIVING WELL

In the area

Territorial development project / Charter « Gardiennes de l'eau » (12 December 2019)



Develop a territory of « living differently »



Housing



Agriculture

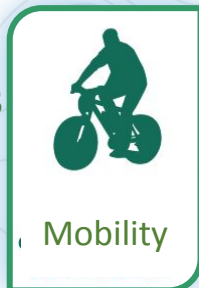
Enhance agricultural areas and activities in synergy with water resource and the food project



Water

recognize water environment as heritage for tomorrow

Re-think mobility to reduce risks and create common links



Mobility

DEVELOP
the potential
of the territory

LIVING WELL
in the area

GARDIENNES
DE L'EAU

PRESERVE /
IMPROVE
water resource



Economy

Adjust the economic development model and be part in the metropolitan dynamics of excellence



5 topics including a large number of public politics on which is based a plan of 32 actions

Keys of success :

- **Co-design**
- **political will**
- **governance**



First concrete actions



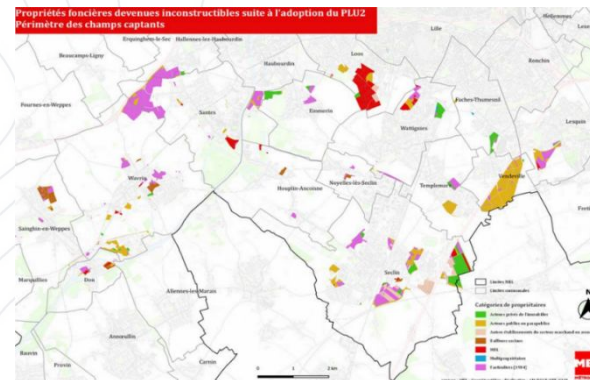
Totem project of Wavrin city center



An agricultural strategy in process of co-design



Land acquisition strategy



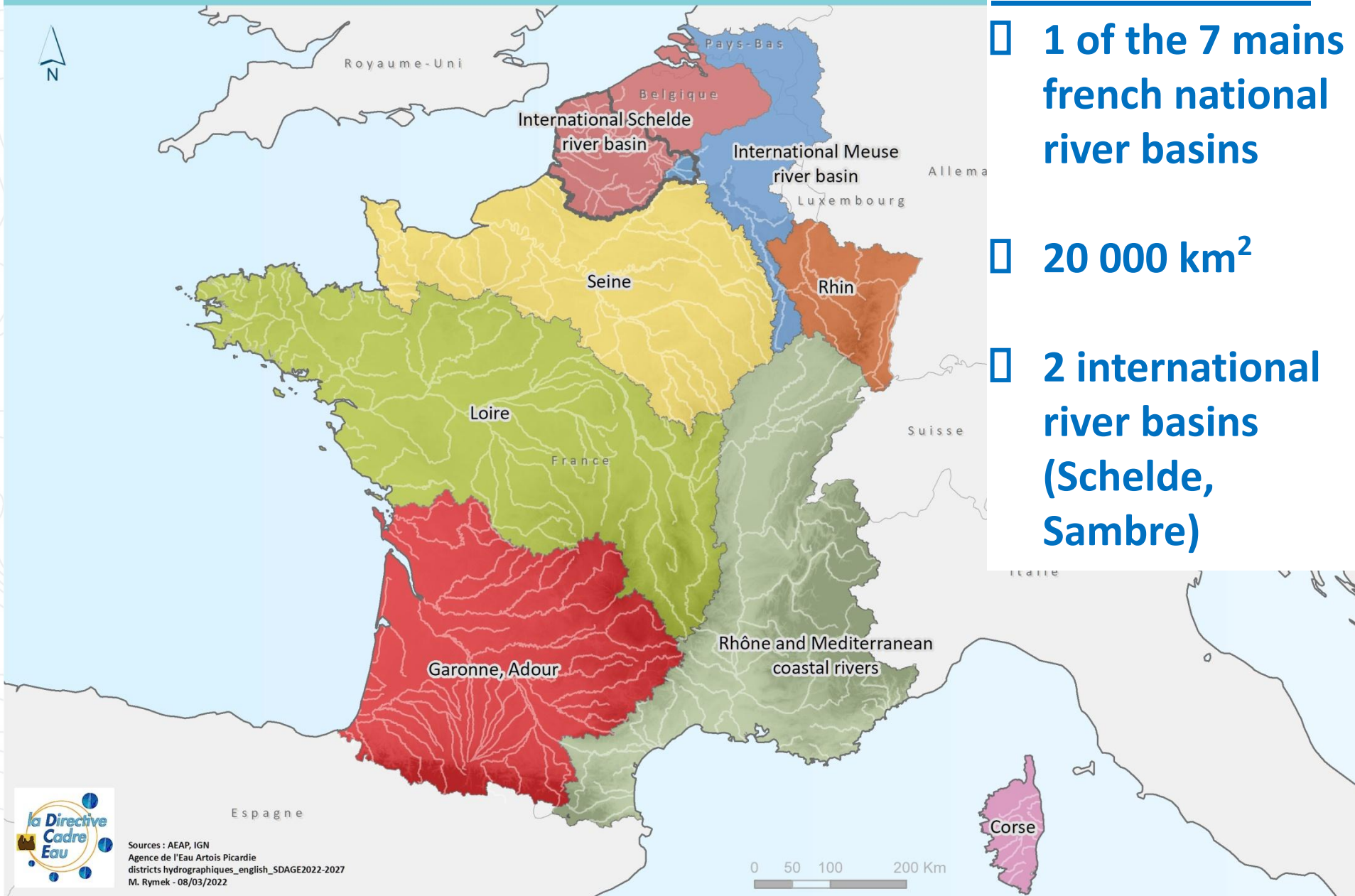
Re-naturation of a former industrial contaminated site project



Rainwater ecological management

- Participation and cultural promotion
- How to finance that ?

International hydrographic districts



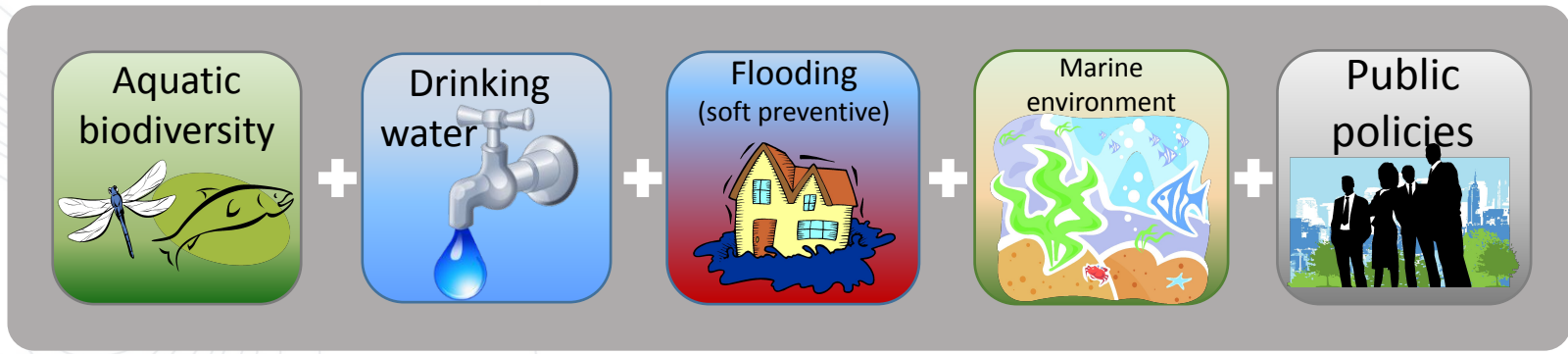
Artois Picardie

- 1 of the 7 mains french national river basins
- 20 000 km²
- 2 international river basins (Schelde, Sambre)

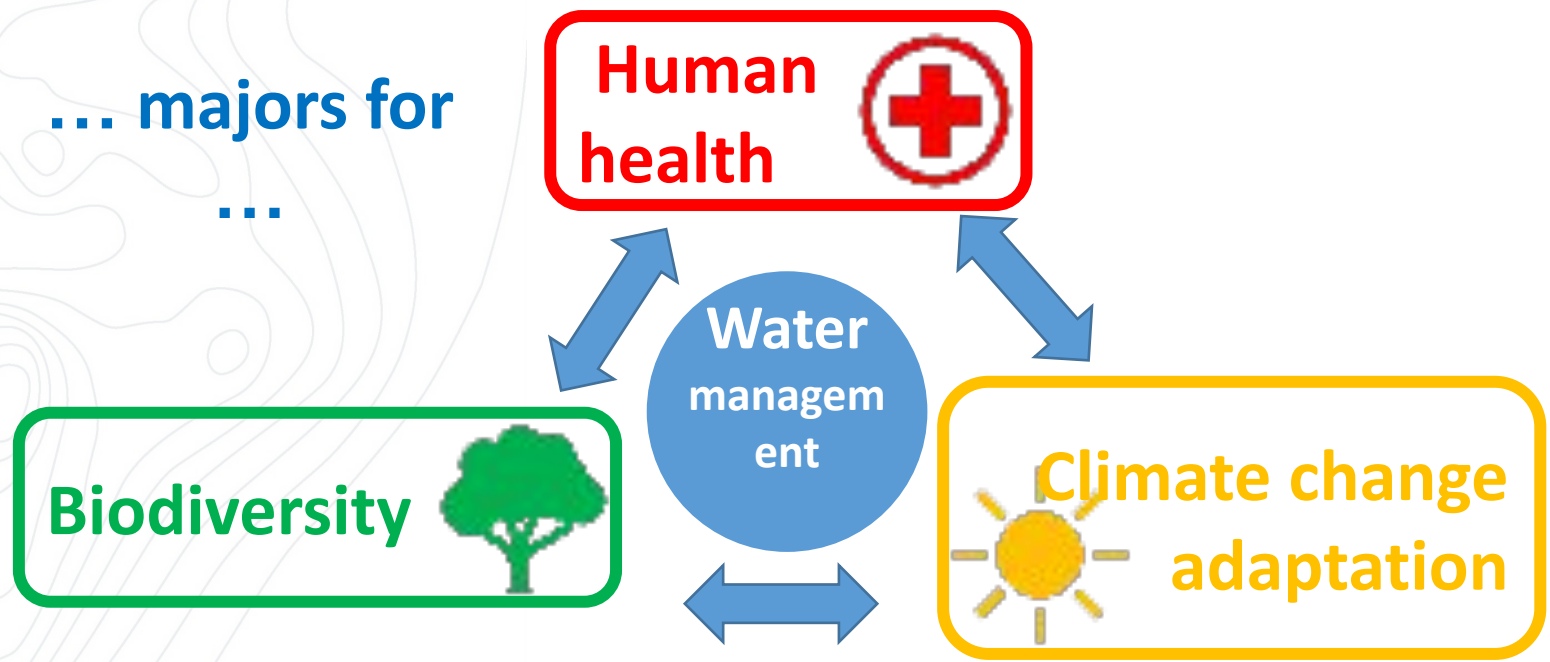


Sources : AEAP, IGN
Agence de l'Eau Artois Picardie
districts hydrographiques_english_SDAGE2022-2027
M. Rymek - 08/03/2022

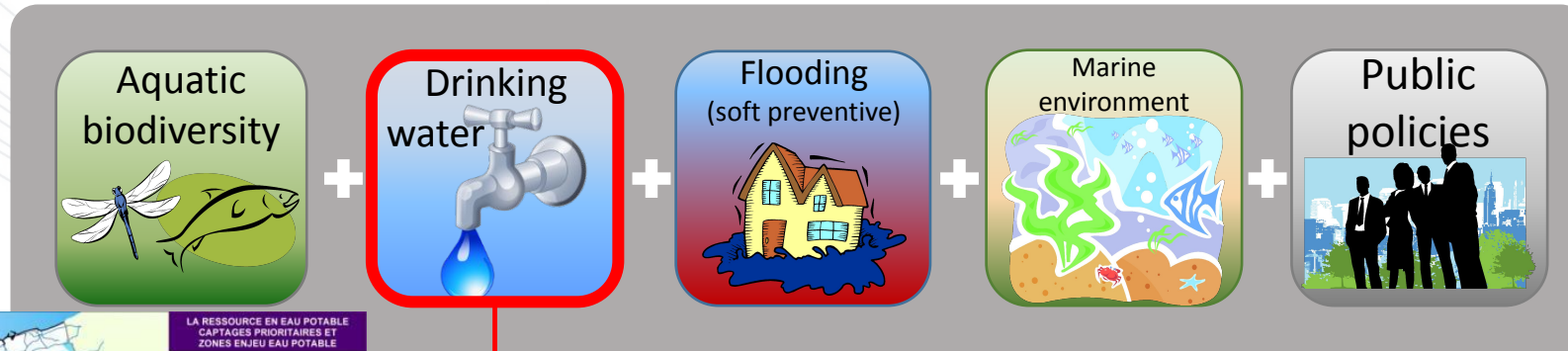
Artois Picardie = 5 issues ...



... majors for ...



Artois Picardie = 5 issues ...



I/G - PROPOSITIONS TERRITOIRES EN TENSION ARTOIS PICARDIE PROJET SDAGE

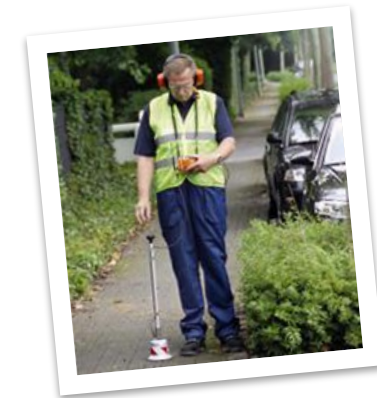


Protect water resources against pollution

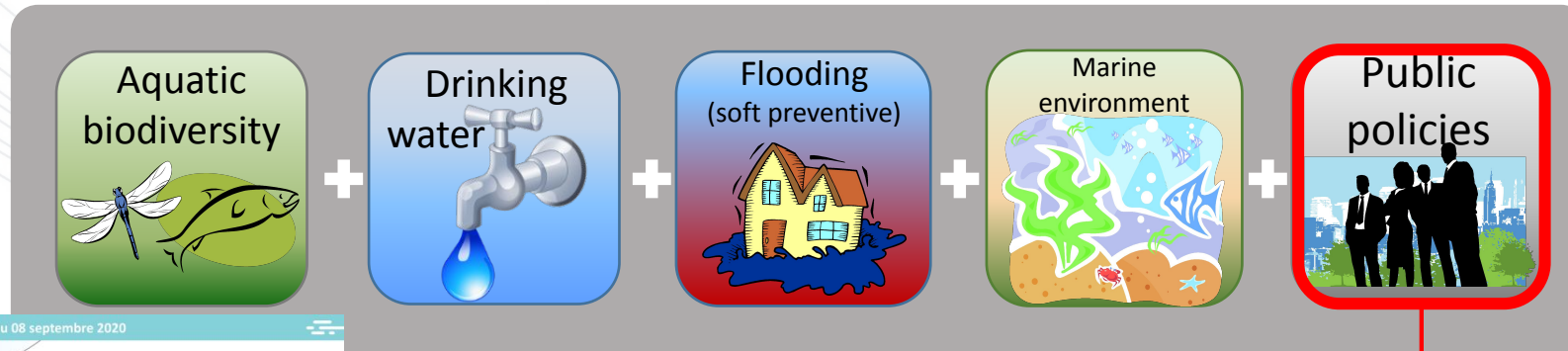
Improve water resources management

Find and repair drinking water networks leaks

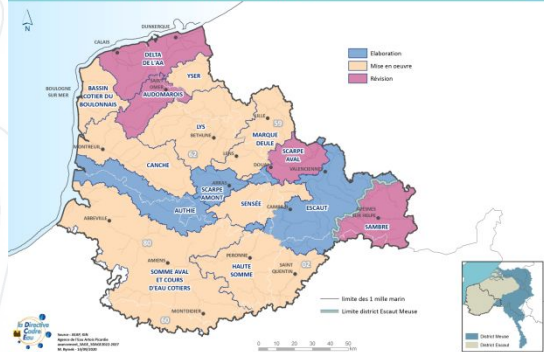
Manage aquifer balanced at international level



Artois Picardie = 5 issues ...



État d'avancement des SAGE au 08 septembre 2020



Enhance local river basin management plans (SAGE)

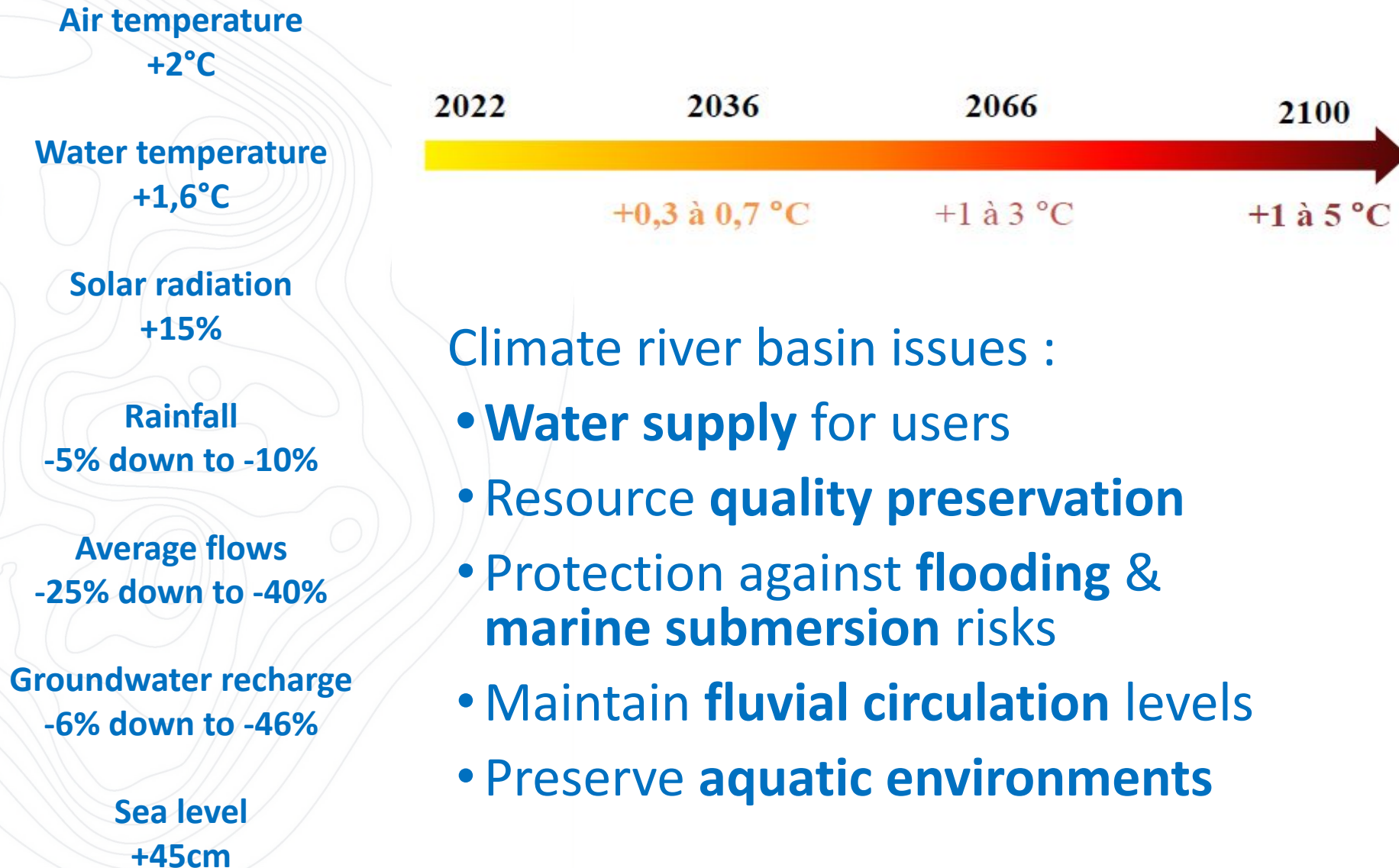
Secure public policy consistency

Improve knowledge and information

Consider economic and social context

• www.agissonspourleau.fr

2065 Climate change forecasts for Artois-Picardie river basin



Contact : Christine Masson
cmasson@lillemetropole.fr

