

Indo-European Water Forum

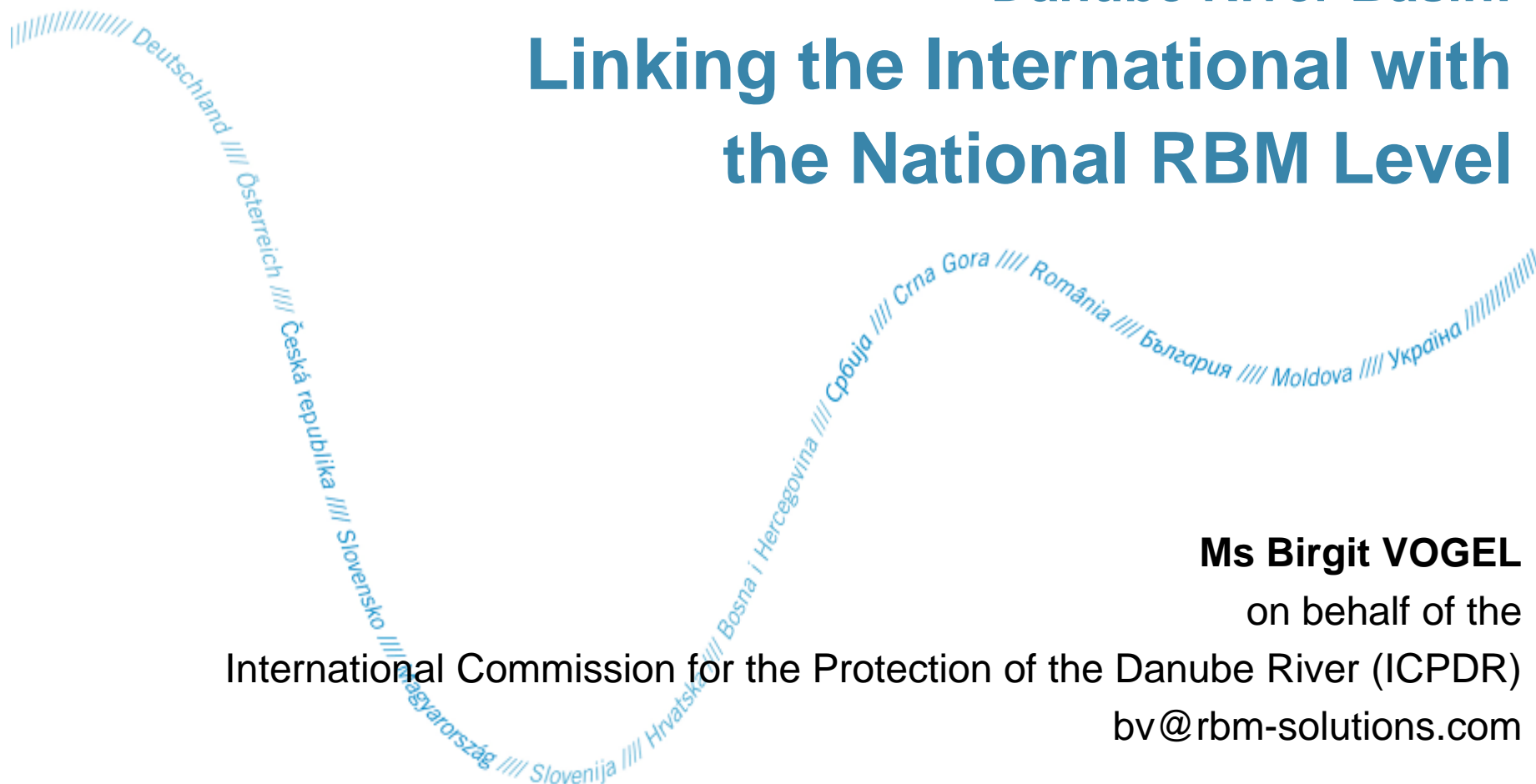
14 – 15 June 2016, New Delhi, India

icpdr iksd

International
Commission
for the Protection
of the Danube River

Internationale
Kommission
zum Schutz
der Donau

Transboundary River Basin Management in the Danube River Basin: Linking the International with the National RBM Level



Ms Birgit VOGEL

on behalf of the

International Commission for the Protection of the Danube River (ICPDR)

bv@rbm-solutions.com

Content

-
- Re-call: Danube River Basin
 - Interlinkage international – national level
 - Example: Danube River Basin Management Plan
 - Coordination mechanism
 - Planning and development perspective
 - Implementation perspective
 - Sharing and handling data
 - Conclusions



This ICPDR product is based on national information provided by the Contracting Parties to the ICPDR (AT, BA, BG, CZ, DE, HR, HU, ME, MD, RO, RS, SI, SK, UA) and CH. EuroGlobalMap data from EuroGeographics was used for all national borders except for AL, BA, ME where the data from the ESRI World Countries was used; Shuttle Radar Topography Mission (SRTM) from USGS Seamless Data Distribution System was used as elevation data layer; data from the European Commission (Joint Research Center) was used for the outer border of the DRBD of AL, IT, ME and PL.

ICPDR Contracting Parties

icpdr ikسد

International
Commission
for the Protection
of the Danube River

Internationale
Kommission
zum Schutz
der Donau



Germany



Austria



Czech Republic



Slovakia



Hungary



Slovenia



Croatia



Bosnia & Herzegovina



Serbia



Montenegro



Romania



Bulgaria



Rep. of Moldova



Ukraine

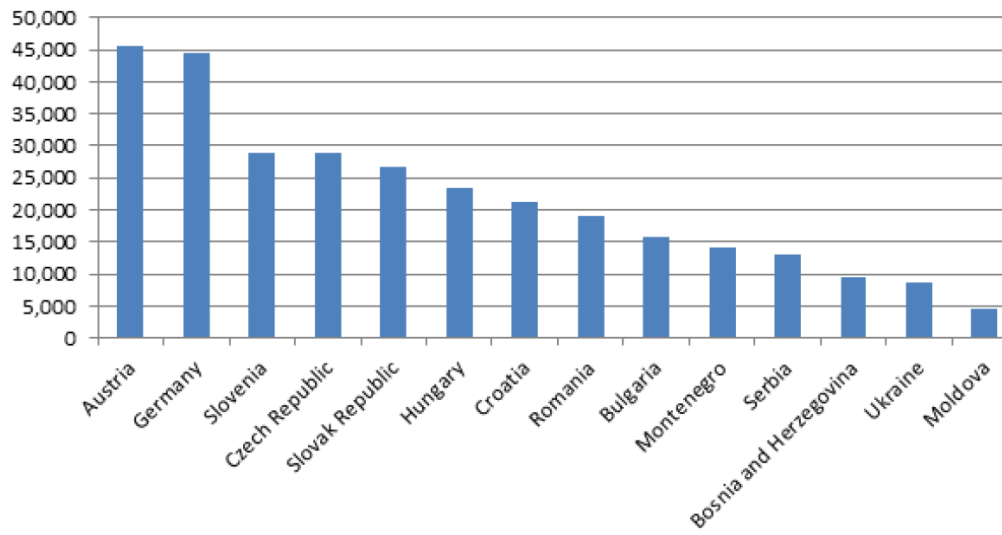


European Union

- **EU Member States (9)**
- **Non-EU Member States (5)**

The Danube River Basin Heterogeneity

- Different RBM challenges in the 14 Danube countries
 - Bring these together in **ONE** single RBM Plan
- > 10 different languages - however, working language is English
- Heterogenic socio-economic facts: Economic growth, employment rates, armed conflicts in recent history, ...
- GDP: Range between ~ 5,000 and ~ 45,000 \$/capita (PPP)

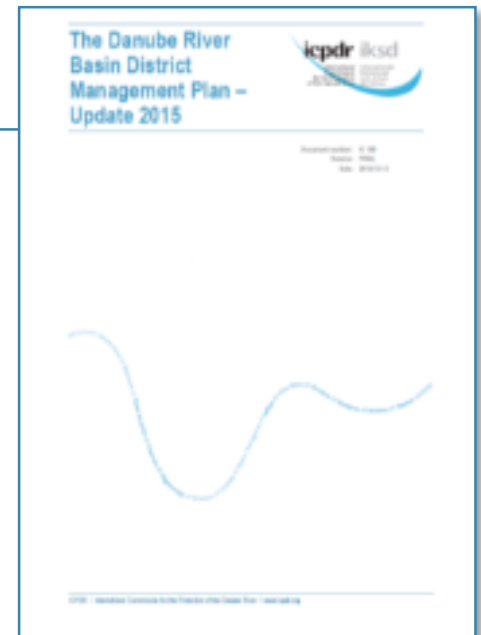


**GDP per capita
(PPP/International \$) of
Danube countries (2013)**



Interlinkage between the international & national RBM level

Example: Coordination, development and implementation of the 1st international Danube River Basin Management Plan



Danube River Basin Management Plan

Basic Facts



- DRBM Plan = aligned to the EU Water Framework Directive
- Developed every 6 years within the ICPDR cooperation framework
 - 1st DRBM Plan: 2009
 - 2nd DRBM Plan: 2015

Developed between all Danube countries on the basin-wide level

Key implementation via the national level

!! Effective coordination is crucial to achieve joint goals !!

Danube River Basin Management Plan

Basic Facts



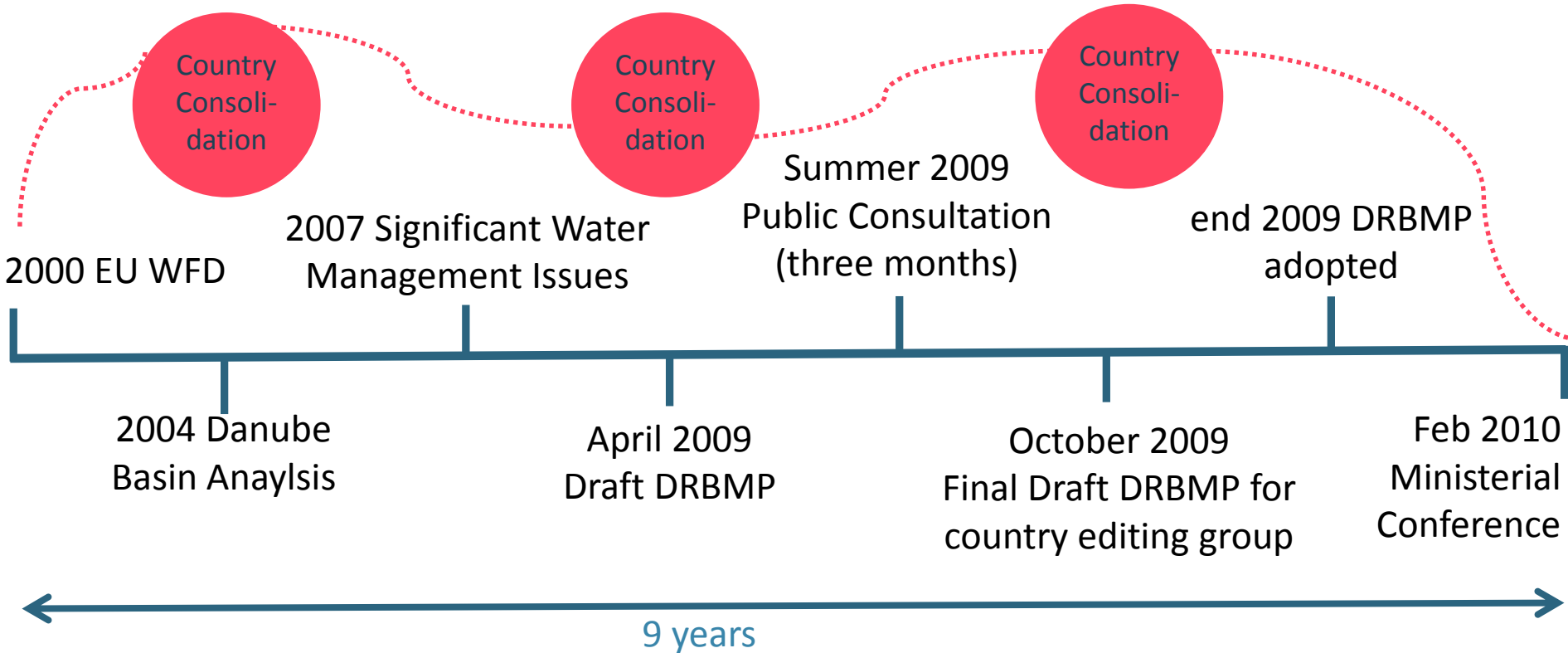
Includes many different themes that need to be coordinated

- River basin characterisation
- Identification of pressures and impacts
- Identification of Significant Water Management Issues
 - Basin-wide / regional importance
- International monitoring network
- Ecological and chemical status of water bodies
- Economic analysis

Joint Programme of Measures for implementation

Danube RBM Plan Timeline

De-centralised River Basin Management takes time



Continuous Process:

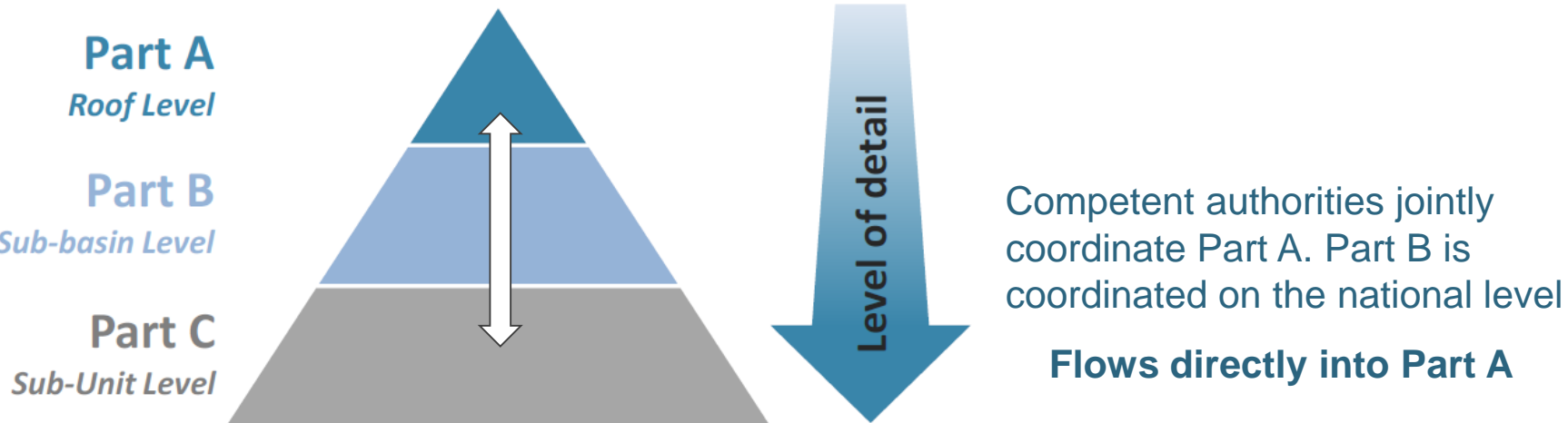
Coordination and Exchange between Expert Groups / Task Groups
Exchange with stakeholders
Data collection and analysis

Danube RBM Plan

Coordination Mechanisms



Clear coordination mechanisms and strategy are crucial



How does this basin-wide/cross-border coordination work in detail ?

Operation through thematic Expert/Task Groups

Danube RBM Plan

Coordination Mechanisms



- **Eight Expert Groups & 4 Task Groups** operate under the ICPDR
 - Deal with technical issues to fulfil obligations in a coordinated way
 - Report to the ICPDR plenary twice a year for resolutions
 - **Jointly** develop the DRBM Plan
- **EGs and TGs meet several times** a year to discuss, advance and develop technical issues of basin-wide/regional importance
- **Meetings circulate** in different ICPDR countries
- **Clear ToR** for each Expert Group
- Several Task Groups operate – only if needed
 - TGs report to the respective Expert Groups

ICPDR Delegations of Contracting Parties

ICPDR Secretariat (Vienna, 8 staff members)

Expert Groups – perform technical work

Danube River Basin Management Plan Development

River Basin Management
Steers and coordinates work between EGs

Monitoring & Assessment

Pressures & Measures

Information Management & GIS

Several Task Groups

Public Participation

Accidental Pollution Control

Flood Management

Ad-Hoc Strategic EG

Danube RBM Plan

Coordination Mechanism



- **2 representatives are formally nominated per country** to EG
 - Nominated experts usually hold a related technical background
- Each Expert Group is **guided by a chairperson**
 - Proposed by EG and confirmed by Heads of Delegations
 - Reports twice a year at the ICPDR plenary meetings
- **Nominated observers** attend the meetings & participate actively
- EG coordination and facilitation by **one Technical Expert**
 - Permanently staff of the ICPDR Secretariat in Vienna
 - Coordinates all work for the basin-wide/regional level

Participation is financially fully covered by each country

Decentralised coordination triggers ownership through involving all countries in expert groups



Implementation of the Danube RBM Plan



Organic
Pollution



Nutrient
Pollution



Hazardous
Substances Pollution



Hydromorphological
Alterations

Four Significant Water Management Issues:

Steering Visions & Management Objectives

Danube RBM Plan

Basin-Wide Implementation



- **Joint Programme of Measures**
 - Addressing each Significant Water Management Issue from the basin-wide perspective
 - Linkage to the national level for implementation ensured
- **Only some measures** are implemented on international level
 - E.g. Iron Gate Dam and sturgeon migration
 - Project in place
- Implementation **mainly through the national level**

Probably most challenging part of RBM cycle
How to support the implementation on the national level
through international guidance?

Example:

Restoration of River and Habitat Continuity in the DRB

River and Habitat Interruption – Current Situation



This ICPDR product is based on national information provided by the Contracting Parties to the ICPDR (AT, BA, BG, CZ, DE, HR, HU, MD, RO, RS, SI, SK, UA) and CH, except for the following: EuroGlobalMap v2.1 from EuroGeographics was used for national borders of AT, CZ, DE, HR, HU, MD, RO, SI, SK and UA; ESRI data was used for national borders of AL, ME, MK, Shuttle Radar Topography Mission (SRTM) from USGS Seamless Data Distribution System was used as topographic layer; data from the European Commission (Joint Research Center) was used for the outer border of the DRBD of AL, IT, ME and PL.

River and Habitat Interruption – Planned Improvements



What are the basin-wide implementation priorities ?

How can these be achieved through coordinated national measures ?

Basin-wide Coordination of Restoration Measures: Adopted Ecological Prioritisation Approach



The ecological prioritisation approach (Part A) is not meant to substitute similar national approaches but to outline the basin-wide perspective. Low restoration priority indicated on the basin-wide level does not imply that no measures should be undertaken on the national level as all fish species need open river continuity. On the other hand, ecological prioritisation is only one of many aspects in deciding which measures to adopt and implement. Final decisions will be taken at the national level.

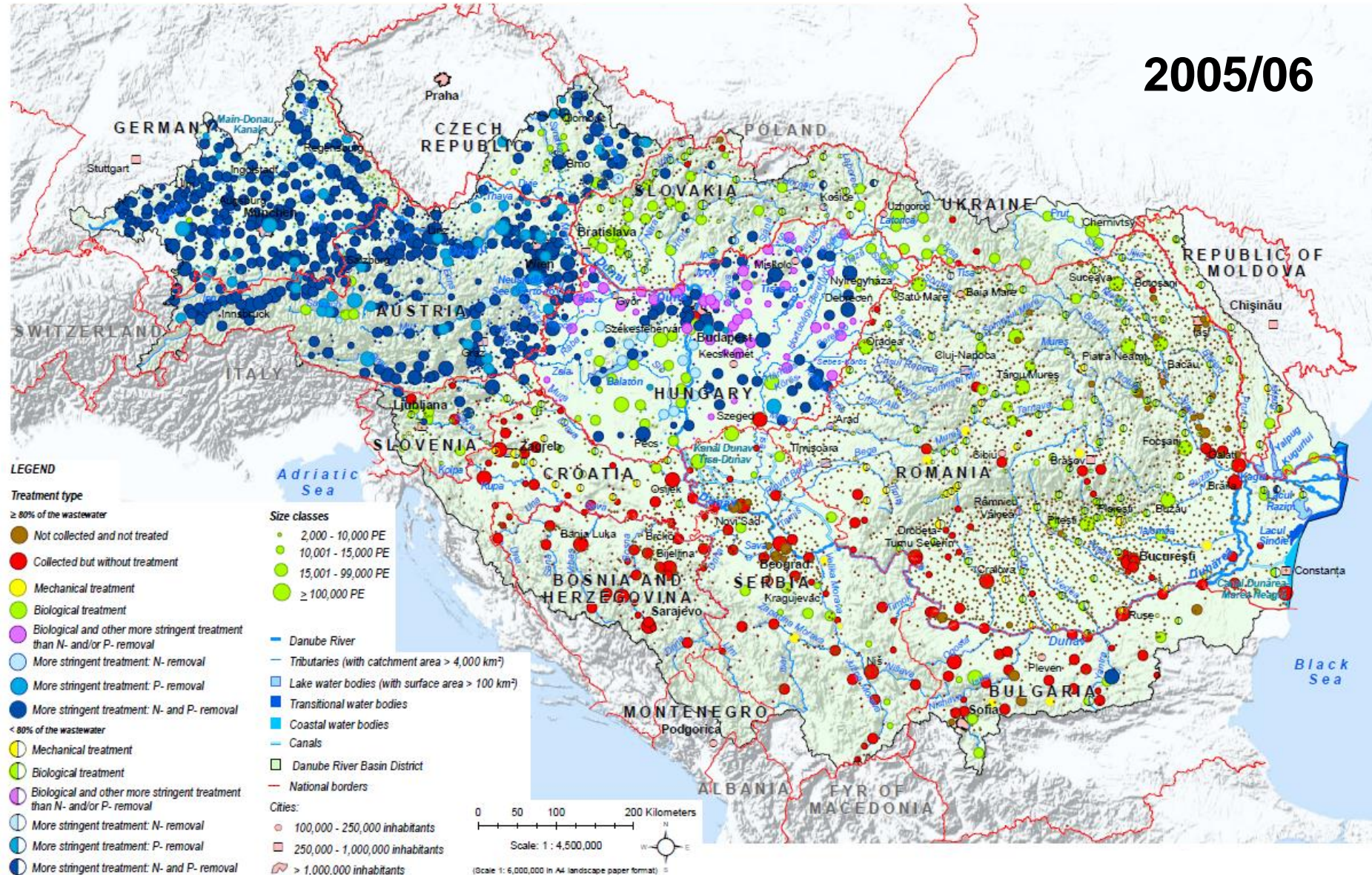
This ICPDR product is based on national information provided by the Contracting Parties to the ICPDR (AT, BA, BG, CZ, DE, HR, HU, MD, RO, RS, SI, SK, UA) and CH, except for the following: EuroGlobeMap v2.1 from EuroGeographics was used for national borders of AT, CZ, DE, HR, HU, MD, RO, SI, SK and UA; ESRI data was used for national borders of AL, ME, MK. Shuttle Radar Topography Mission (SRTM) from USGS Seamless Data Distribution System was used as topographic layer; data from the European Commission (Joint Research Center) was used for the outer border of the DRB of AL, IT, ME and PL.

www.icpdr.org



From red to blue: Treating wastewater – Reducing point source pollution

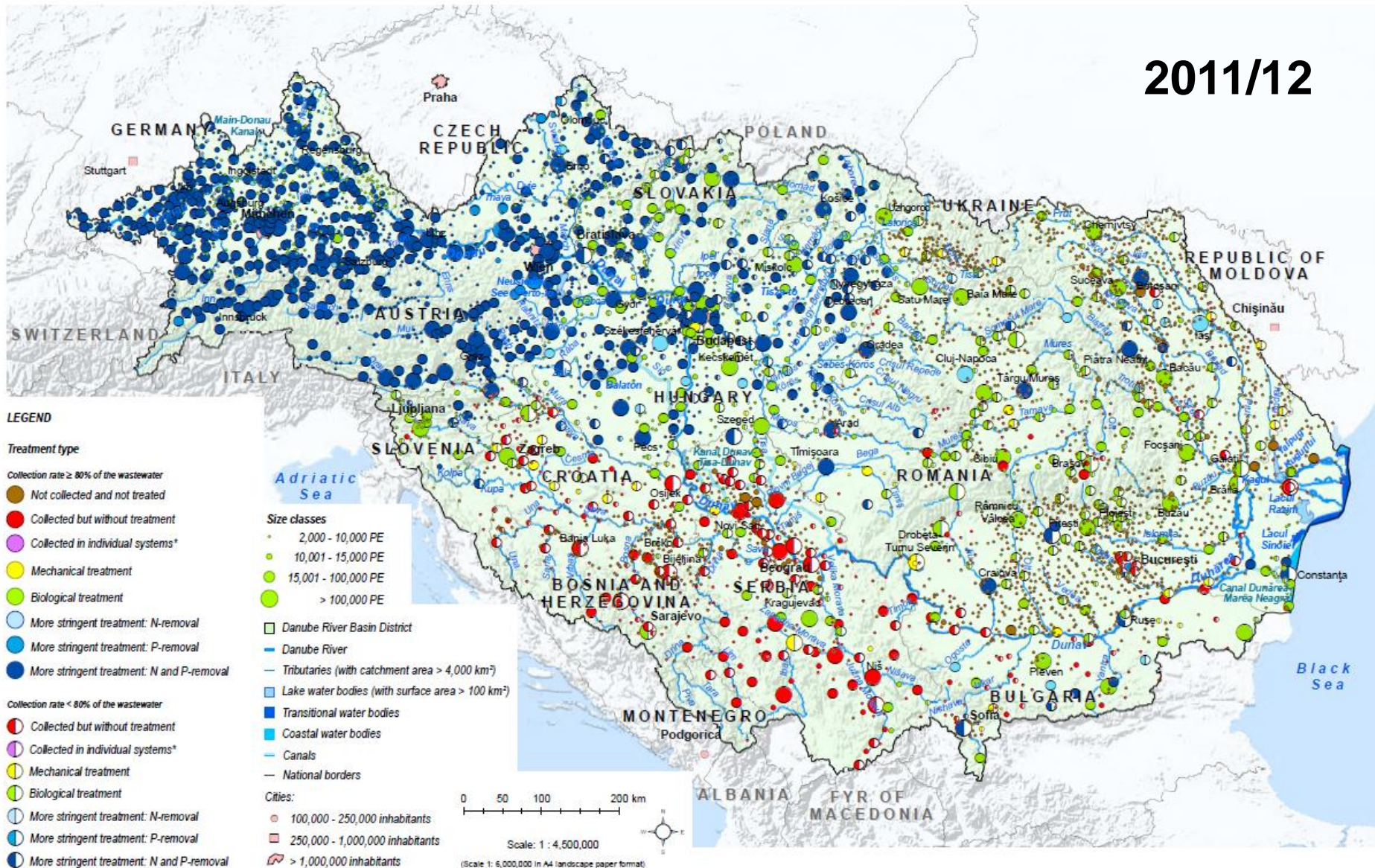
2005/06



From red to blue:

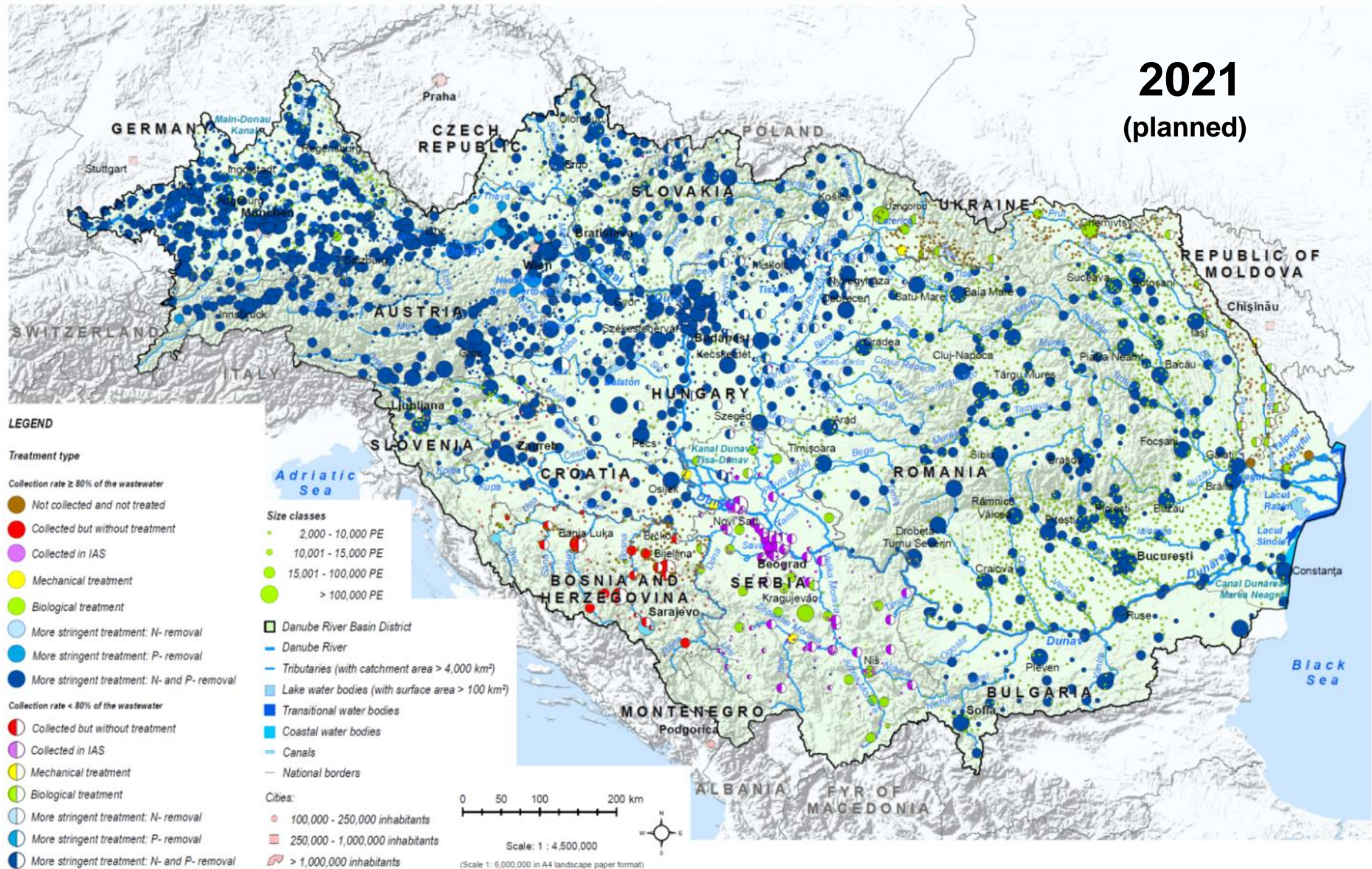
Treating wastewater – Reducing point source pollution

2011/12



From red to blue:

Treating wastewater – Reducing point source pollution



Danube RBM Plan

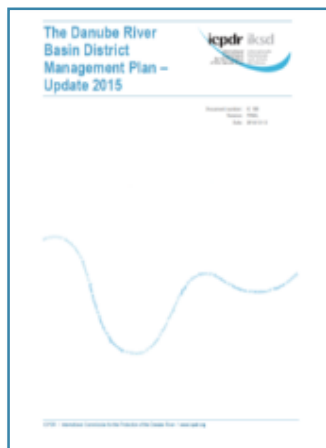
Basin-Wide Implementation



- **No legal enforcement** for international level to implement but on national level. Hence:
 - Ensure functioning cooperation mechanisms
 - Functioning implementation link international-national level
 - Clear guidance and steering from international level
- **How can/must implementation be checked ?**
 - Through the respective national RBM Plans: **Role of EC !**
 - Evaluation of implementation success (international DRBM Plan)
 - Through exchange in the ICPDR Expert Groups and mechanism

International implementation priorities differ from national ones (vice versa)

Coordination in both directions is crucial for integrated success

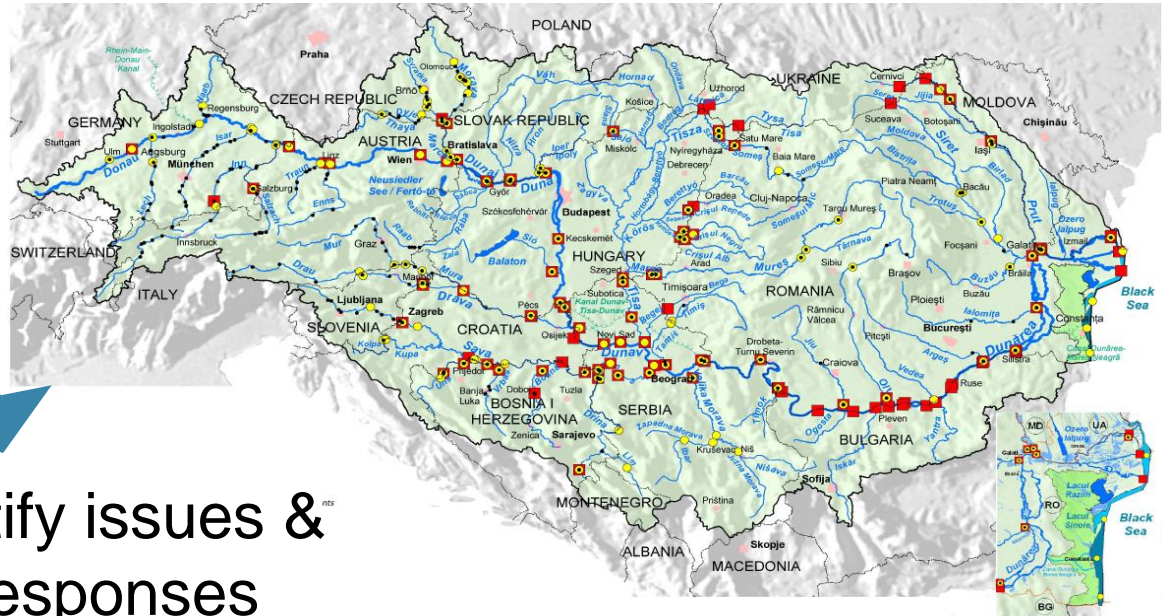


Data Handling and Sharing for the Danube RBM Plan

Linkage of International/National Level Basin-Wide Data Handling/Sharing

icpdr iksd

International Commission for the Protection of the Danube River
Internationale Kommission zum Schutz der Donau



collect data

Identify issues & responses

implement measures



Künzelmann

Künzelmann, UFZ

Linkage of International/National Levels Basin-Wide Data Handling/Sharing



Data sharing is a delicate issue in any large basin

GENERAL TROUBLE SHOOTING:

Issue 1: Countries collect data with different methodologies

Issue 2: Data is not shared on basin-wide level

Issue 3: Country has reporting obligations to several bodies
(e.g. ICPDR & EU) and formats vary

Issue 4: Data does not exist e.g. due to lack of resources

Issue 5: Data is there, but country objects to publication

Each issue has its causes and solutions.

However, all issues have in common:

Perfect is the enemy of good! Perfection needs time...

Linkage of International/National Level Conclusions



- Most large river basins cross borders: inter-state or international !
- A 'simple' river basin does not exist – all are complex
- Each river basin holds specific
 - Natural characteristics
 - Water uses and pressures
 - Impact patterns
 - Cooperation frameworks
 - River Basin Management issues, approaches and challenges
- Integration of factors and features is important BUT
 - Focus on **most** important issues for management and implementation
 - Often: The more issues, the more diffuse is the outcome

There is not ONE single rule or template for RBM of large basins

Tailor made approaches for each basin are needed – use inspiring examples

Linkage of International/National Level Conclusions



- **Cooperation between the international and national level is crucial**
 - Can make RBM successful on both sides
 - Realise joint benefits
- **Clear strategies** and cooperation mechanisms need to be in place
- Identify **joint aims** and management issues for basin-wide level
 - Define clear aims and management objectives to be achieved
 - Implementation: Ideally set priorities for basin-wide scale
 - Check achievement status over time
- **Bring together the two groups** of
 - decision/policy makers and
 - technical experts through international expert groups

Creation of an enabling environment and agreed basin-wide/joint aims can help targeted cooperation across borders

icpdr iksd

International
Commission
for the Protection
of the Danube River

Internationale
Kommission
zum Schutz
der Donau

Thank you very much!

ICPDR Secretariat / Vienna International Centre, D0412 / P.O. Box 500 / 1400 Vienna / Austria
Phone +43 1 26060-5738 / Fax +43 1 26060-5895 / icpdr@unvienna.org / www.icpdr.org

