

# Greek National Policy on Diffuse Pollution Sources

Chrisoula Nikolarou  
Special Secretariat for Water, Greece

# The Special Secretariat for Water

The SSW, is responsible for:

- protection and management of the water resources of Greece
- coordination of competent authorities
- implementation of the WFD, the MSFD and all the related daughter Directives



# River Basin Management Plans

## Water Framework Directive

Analysis of pressures:

- Point source pollution
- Diffuse pollution
- Water abstraction
- Other

In accordance to relevant guidance document

# Diffuse pollution

is the largest polluting pressure causing water bodies to fail WFD objectives

caused mainly by:

- agriculture
- free range livestock



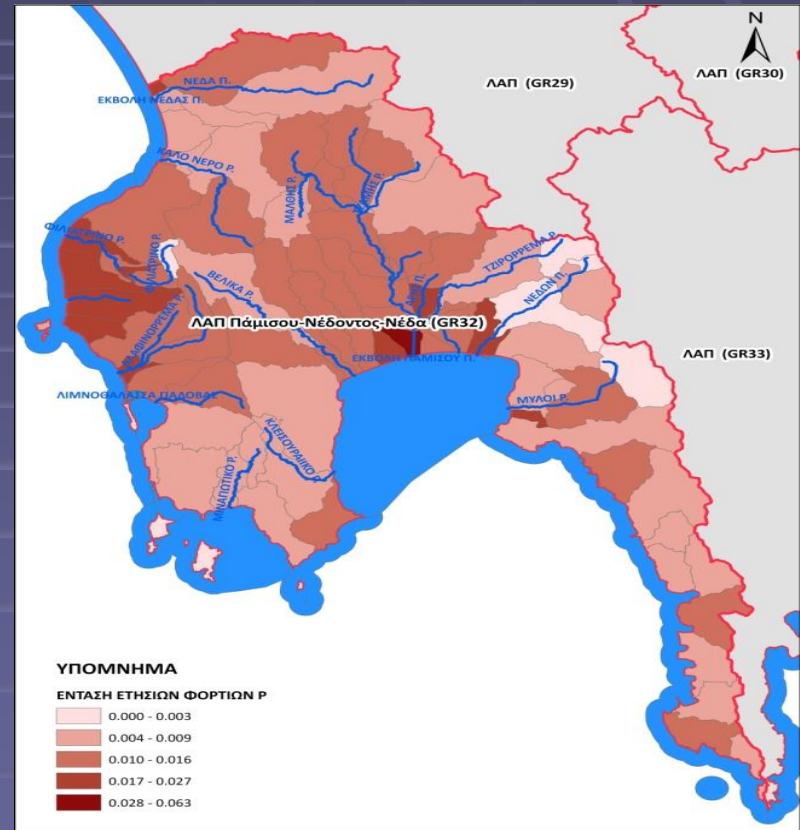
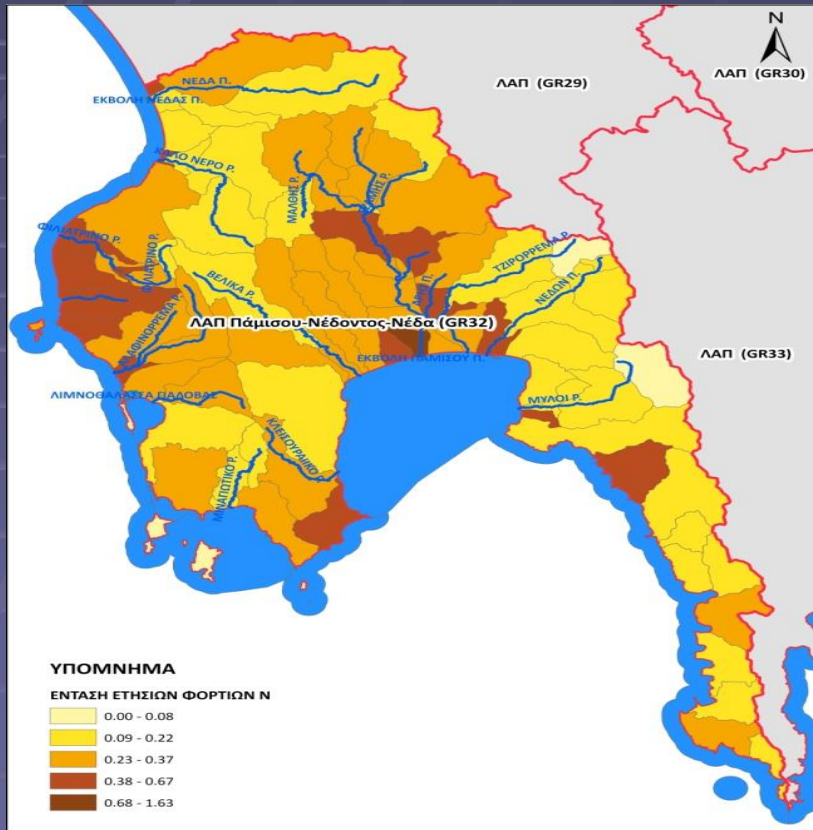
# Analysis of diffuse pollution

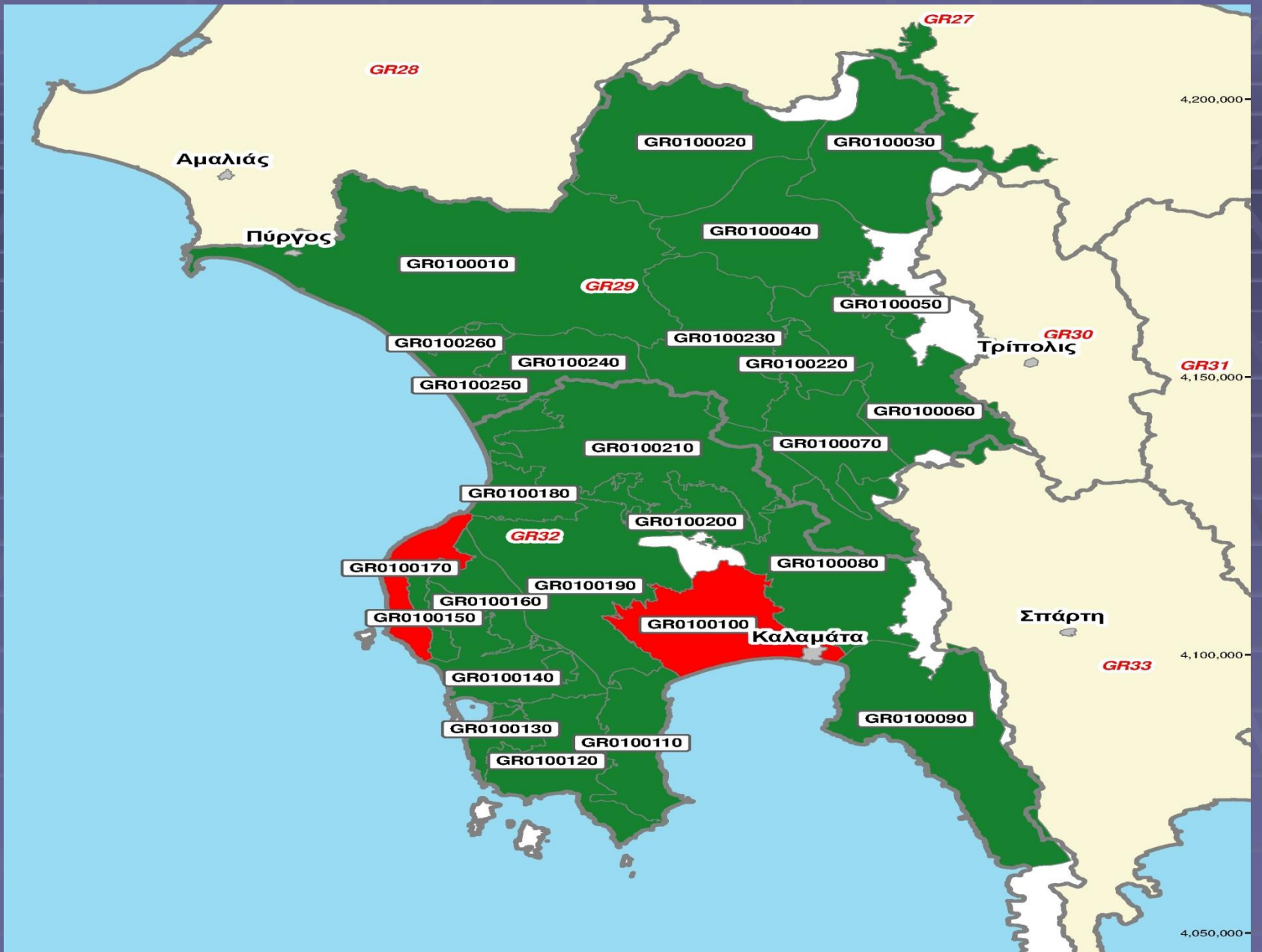
Analysis in each River Basin is based on

- recorded pressures
- evaluation of their significance
- assessment of their impact in each water body
- classification of water bodies based on monitoring data

# Total N load (tn/year/km<sup>2</sup>)

# Total P load (tn/year/km<sup>2</sup>)





# Nitrate Vulnerable Zones

8 NVZ's in 2008 (according to Directive 91/676/EC)



River Basin Management Plans



Revision of Nitrate Vulnerable Zones (NVZ)

30 NVZ's 2014



# Action Plans for NVZ's

Cover activities posing a risk to the water environment, including:

- Storage and application of fertilizer
- Cultivation of land
- Keeping of livestock
- Surface water run-off
- Application of pesticides



# Supplementary Measures

- Measures for prevention and mitigation of diffuse pollution
- Public awareness measures



# Measures for prevention and mitigation of diffuse pollution

- Gradual, conversion of conventional crops to organic
- Development of specialized tools for the sustainable use of fertilizers and water
- Small Scale Nitrate Reduction agro-environmental measures - Protection of Nitrate Vulnerable Zones
- Delineation of protection zones for drinking water abstraction works

# Public awareness measures

- Actions for farmers awareness on water issues
- Strengthening environmental action programmes in Primary Education
- Implementation of information workshops
- Organization of information meetings on new technologies, modern irrigation techniques, environmental protection issues, fertility of land, etc.



# Implementation of PoMs

SSW in coordination with:

- Other Ministries
- Water Directorates of Decentralised Administrations
- Regional and Municipal Administrations



# Monitoring Program

Common Ministerial Decree 140384/2011 for monitoring of surface and groundwater bodies:

- 1392 sampling points in groundwater
- 616 sampling points in surface waters



# Monitoring Program

## Optimization of monitoring program

- analysis of anthropogenic pressures and impact
- determination of ecological and chemical status of surface waters
- determination of qualitative groundwater status
- inventory of protected areas