

Climate Change Adaptation in the Lake Chad Basin

Engr. Sanusi Imran Abdullahi

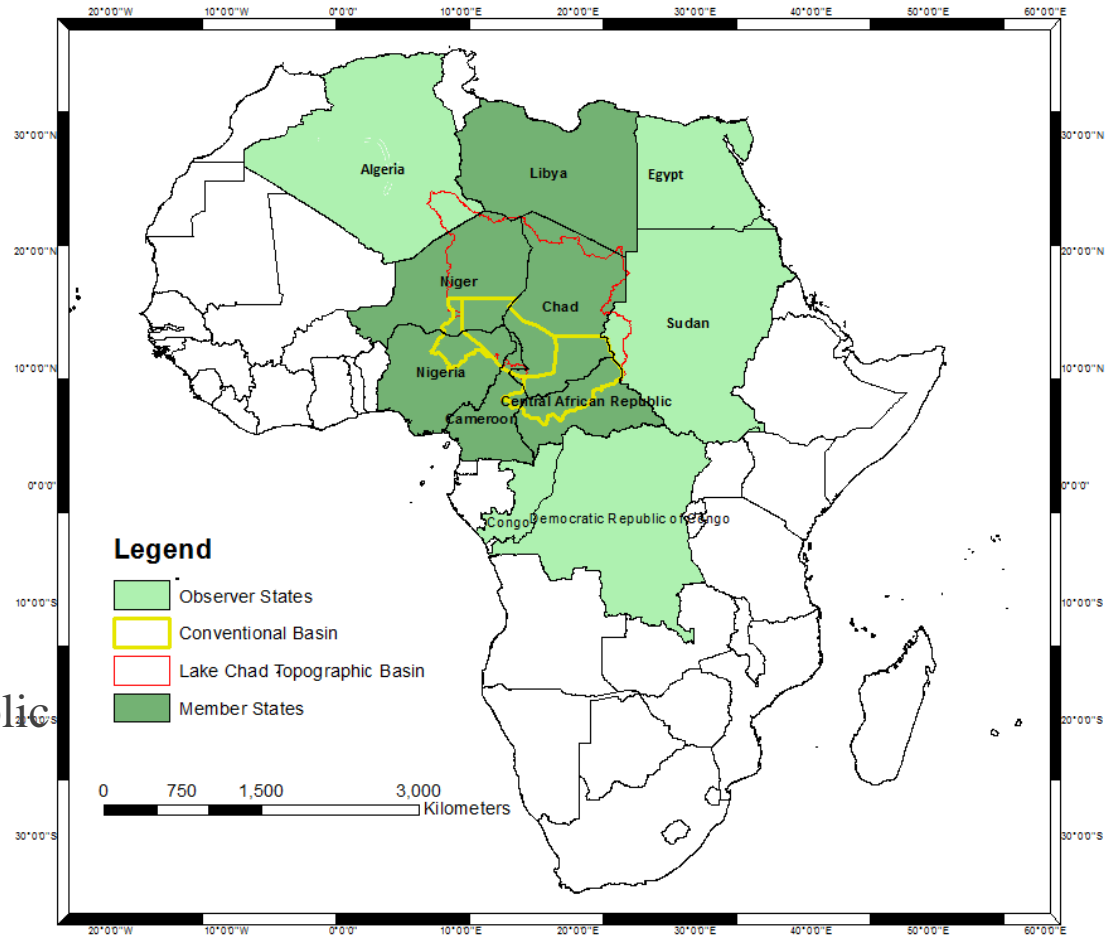
www.cblt.org

Member States

Created on the 22nd May 1964 by the Fort Lamy Convention

Current Member States:

- Chad (1964)
- Cameroun (1964)
- Niger (1964)
- Nigeria (1964)
- RCA (1994)
- Sudan (2000) Yet to Ratify
- Libya (2008)
- Algeria, Egypt, Republic of Congo, Democratic Republic of Congo (Observer Status)



Knowledge Base

Changes in climate conditions in the Lake Chad Basin has already resulted in

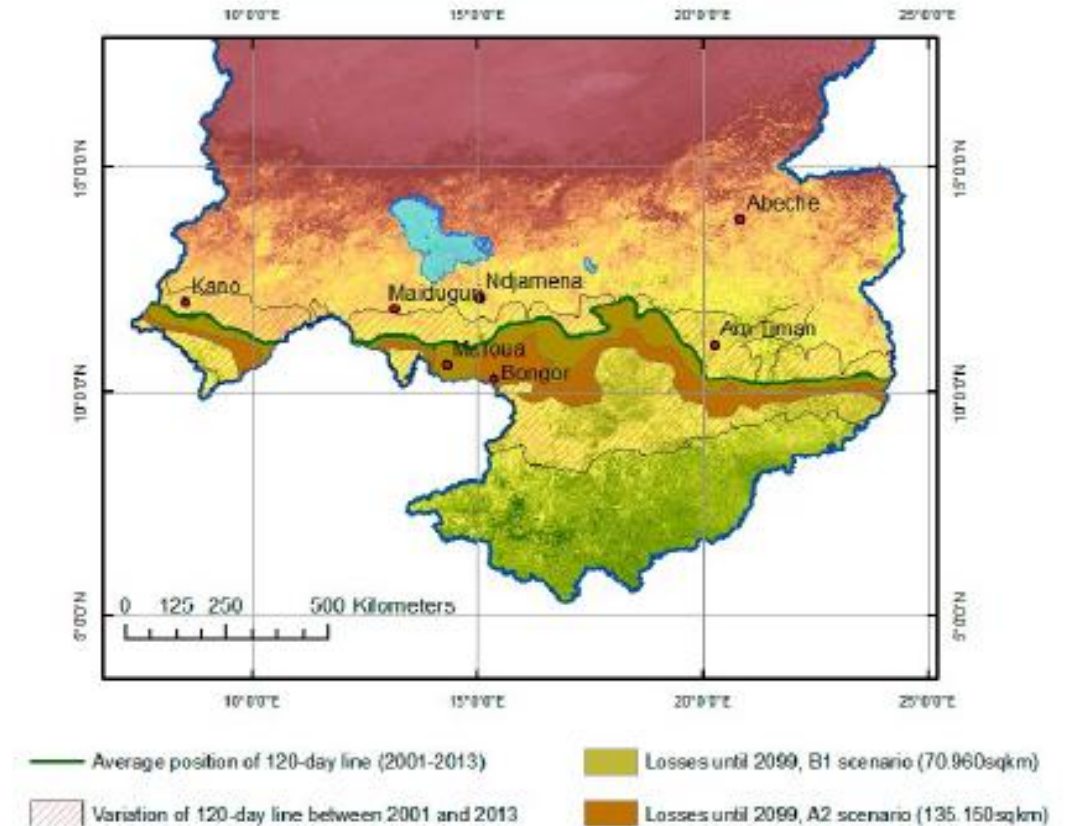
- increased food insecurity,
- social tensions and poverty, and
- a rise in the number of refugees among the affected population.

A study “Adaptation to Climate Change in the Lake Chad Basin” was initiated to

- Provide the knowledge base as input and contribution for the LCBC Climate Change Adaptation Strategy Development
- Modeling results forecast the highest projected increase of mean annual temperature for the central and the eastern Lake Chad Basin reaching in some areas up to 3 °C (B1) or almost 6 °C (A2) by the end of this century.

Knowledge Base

- There will be a gradual southward shift of ecosystems within the Lake Chad Basin.
- The line marking the 120-day growing period will shift south with largest losses of cropping areas occurring in the central part of the Lake Chad Basin.
- Total area losses will amount to 70,960 km² (B1 scenario) and 135,150 km² (A2 scenario) by the end of the century.
- Due to increased evapotranspiration rates, the duration of the growing period of wetland vegetation will likely be shorter.



Pilot Project in LCB Floodplains

- Conducting a study on the impacts of climate change on various types of farming systems;
- Developing and disseminating various adaptation measures in the main production systems;
- Creating a network of relevant actors for an exchange of information and data on climate change (platform for regional knowledge transfer);
- Raising awareness among local producer groups and cooperatives
- Testing of adaptation measures in the pilot zone
- disseminates information on climate change and adaptation measures.
- Introduction of alternative cropping practices.
- Supports the LCBC in developing its regional climate change adaptation strategy

Regional Adaptation Strategy for Climate Change in the Lake Chad Basin

Regional Strategy For Adapting To Climate Change In The Rural Sector (currently under development)

Goal: aims to strengthen the resilience of the rural sector

- **Priority 1:** Reducing the vulnerability to climate risks of rural sector activities in the Lake Chad Basin
- **Priority 2:** Sustainable management of natural resources: water, soil and vegetation
- **Priority 3:** Promoting Climate-Resilient Income Generating Activities
- **Priority 4:** Identification, improvement and dissemination of appropriate agro-sylvo-pastoral and fish farming techniques for adaptation to climate change
- **Priority 5:** Cooperation and knowledge development on climate change and strengthening the adaptive capacity of the basin populations

Actions under PRODEBALT

Under Component B: Adaptation Of Production Systems To Climate Change

- **Small Irrigation** - 1408 ha of small irrigated perimeters
- **Sustainable management of forest resources** - 5160 ha of forest plantations
- **Agroforestry plantations**- 5700ha of agroforestry plantation
- **Development and rational management of fisheries resources** - 12 landing stages, 16 surveillance antennas constructed. 900 Chorckors ovens, 2500 ml of drying cages over 500 Isothermal boxes distributed to fishermen
- **Sustainable management of pastoral resources** -778 km of transhumance corridors and 79 pastoral wells and 4,400 ha regeneration of degraded ecosystems
- **Alternative sustainable local development initiatives**-**600** micro-projects for income-generating activities and socio-community infrastructure in the basin

THANK YOU

