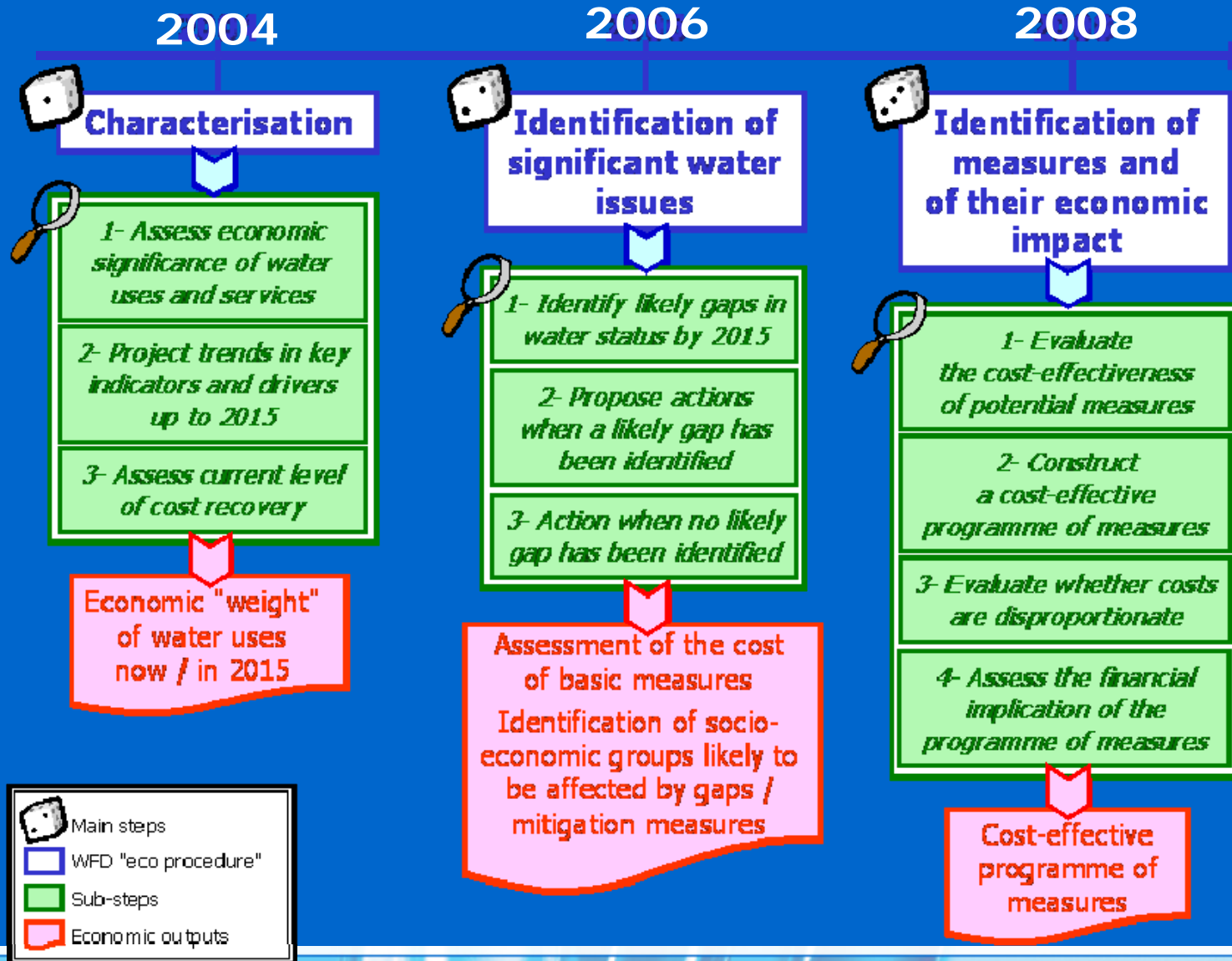


Mégève – 21 & 22 september 2006

Development of Programme Of Measures , economic analysis and financing issues

*Arnaud Courtecuisse
Agence de l'Eau Artois-Picardie – France*

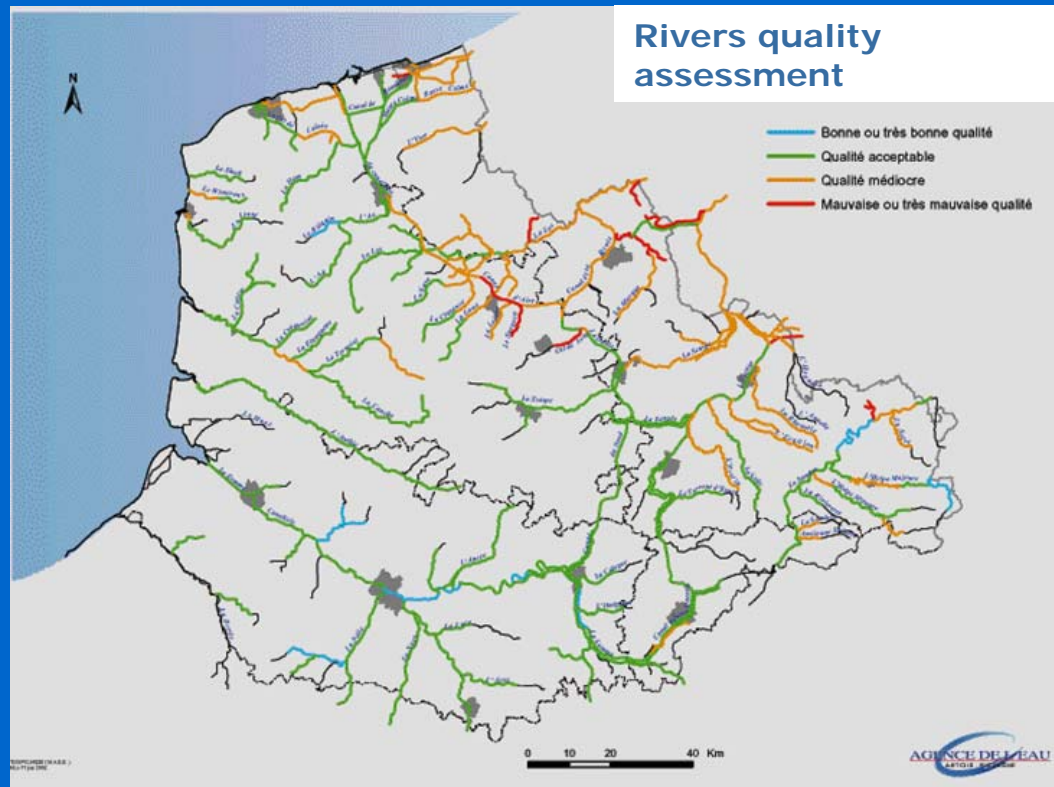
1. WFD & Economic Analysis



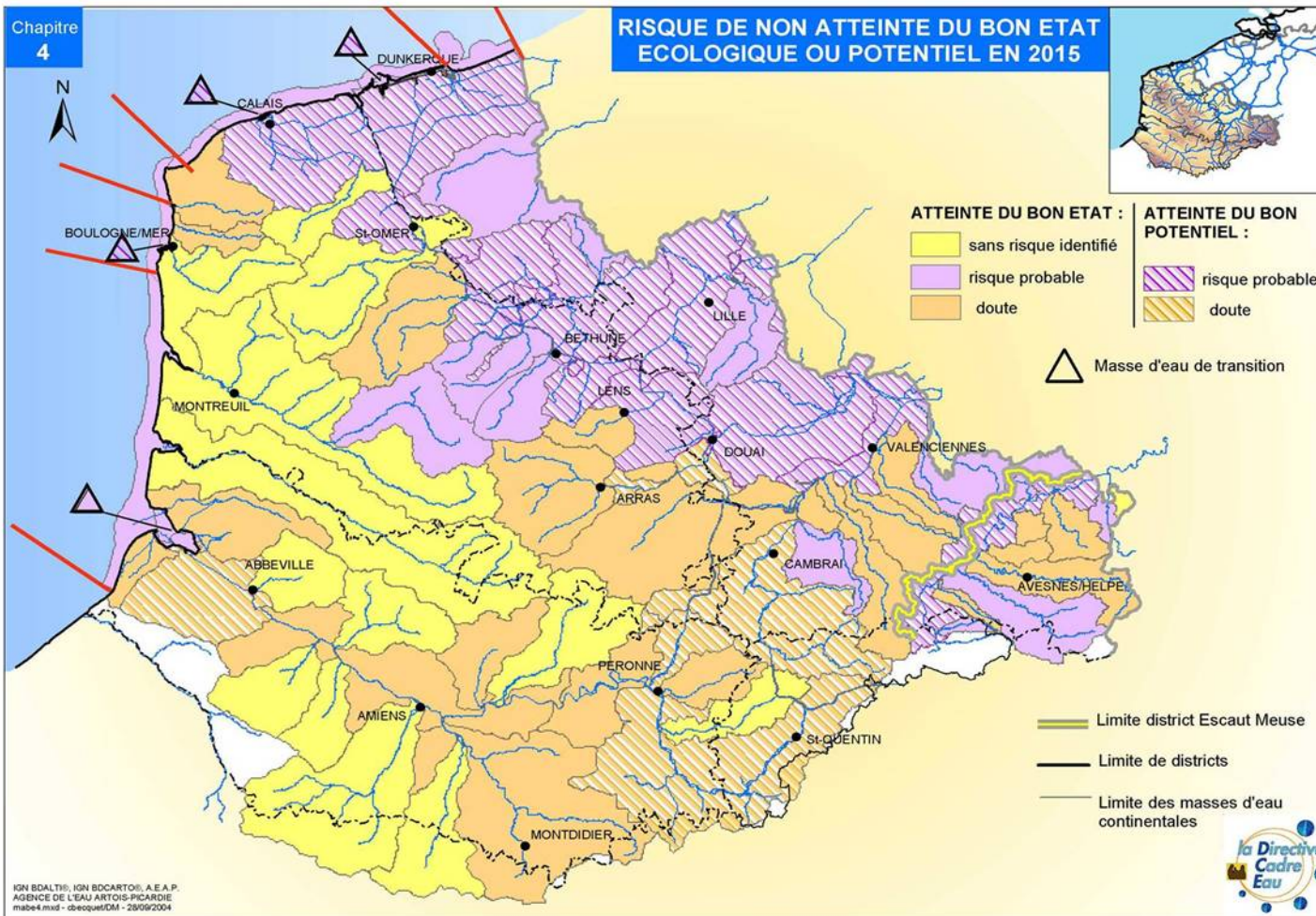
1. WFD & Economic Analysis

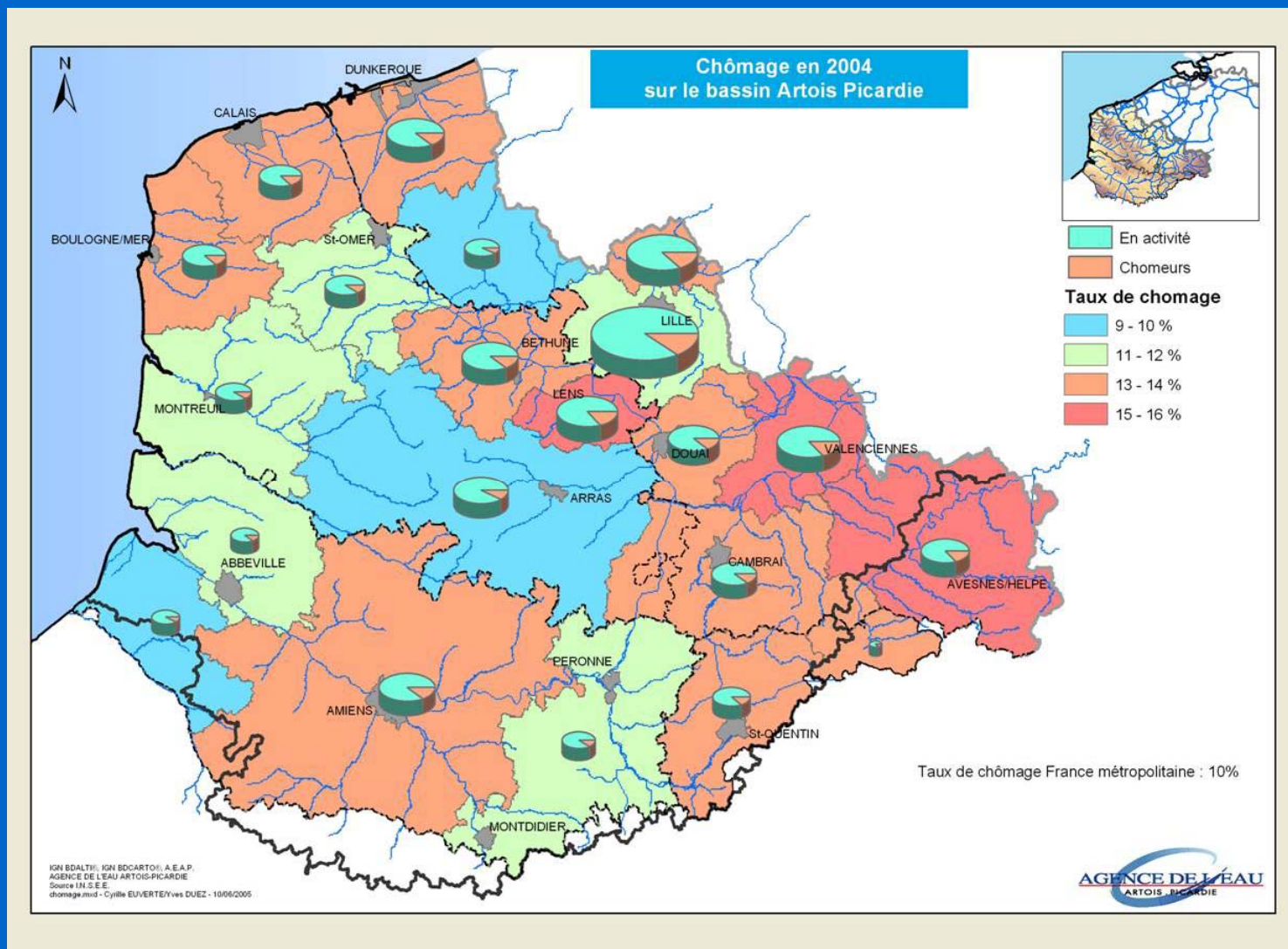
- for the development of programme of measures :
which set of measures for achieving good status at the lower cost
 - ⇒ Cost, impact of measures, scale,
Upstream/downstream issues ?
- for the development of River Basin Management Plan :
Is the cost of the programme of measures disproportionate for a water body of a group of water body
 - ⇒ cost-benefit analysis, financing capacity of the economic sectors ?

2. POM & RBMP : looking for indicators



- 20 000 Km²
- 4,7 Millions inhabitants
- GDP: 98 billions €
 - GPD/inhabitant: 21 107 €
 - GPD/inh France: 25 978 €
- Unemployment rate: 12,7%
 - France: 9,9 %
- 96% of drinkable water come from groundwater



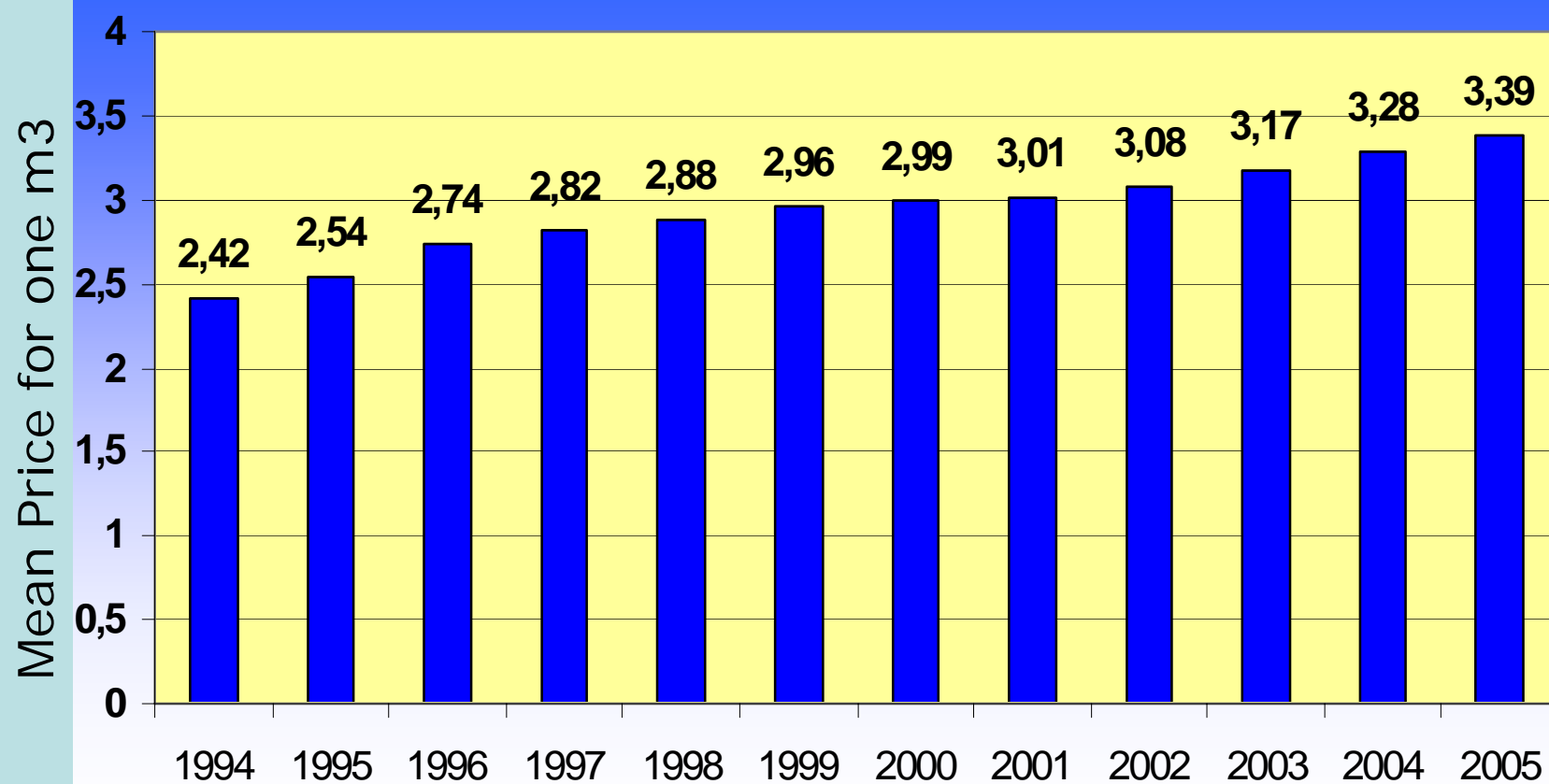


2. POM & RBMP : looking for indicators

An illustration : assessment of the cost of some measures on the level of water price.

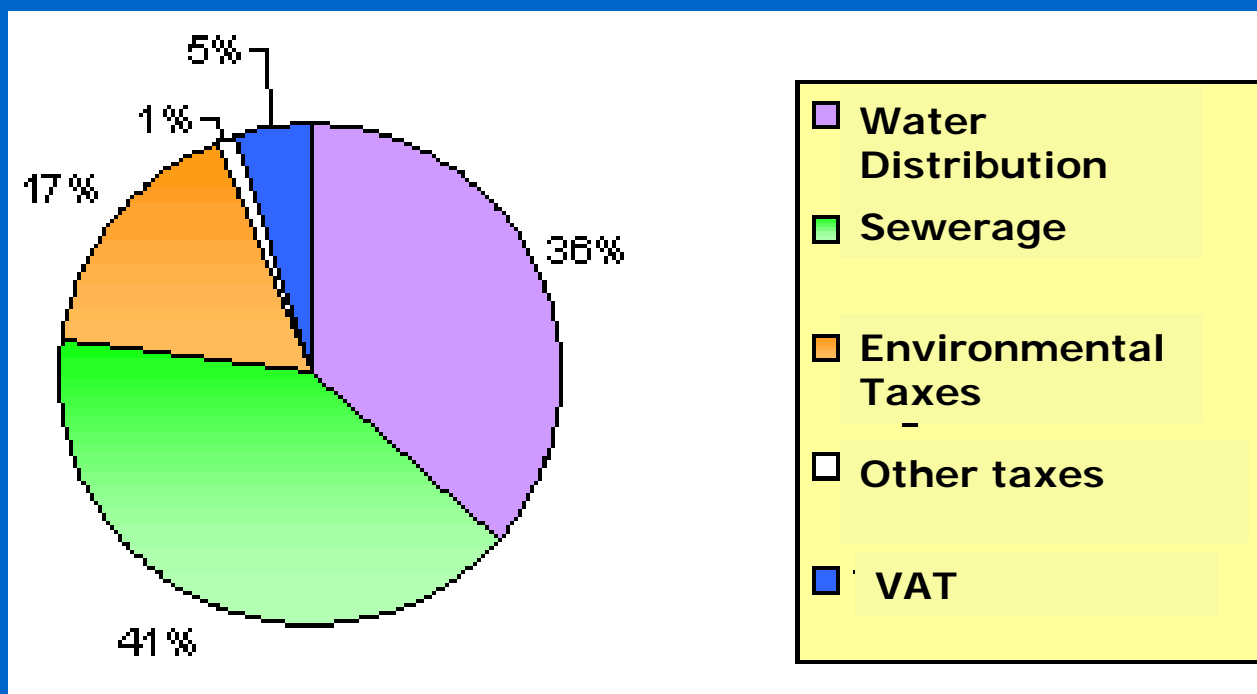
- investment for new WWTP or sewerage network
- cost (inv+op) at municipality (or group of mun.) level
- impact on water price for households at this level
- calculation of the mean water bill for household (with comparison with available income).

2. POM & RBMP : looking for indicators



2. POM & RBMP : looking for indicators

The breakdown of the 3,39 euros



2. POM & RBMP : looking for indicators

	Mean available income per household
Aisne	23 499
Nord	24 314
Pas de Calais	23 194
Somme	23 796

table 1 : Mean available income per household in all the sub-region of the Artois-Picardie Basin.

Source : INSEE (National Statistics) + CEGMA TOPO

2. POM & RBMP : looking for indicators

Comparison Water bill vis à vis household's available income

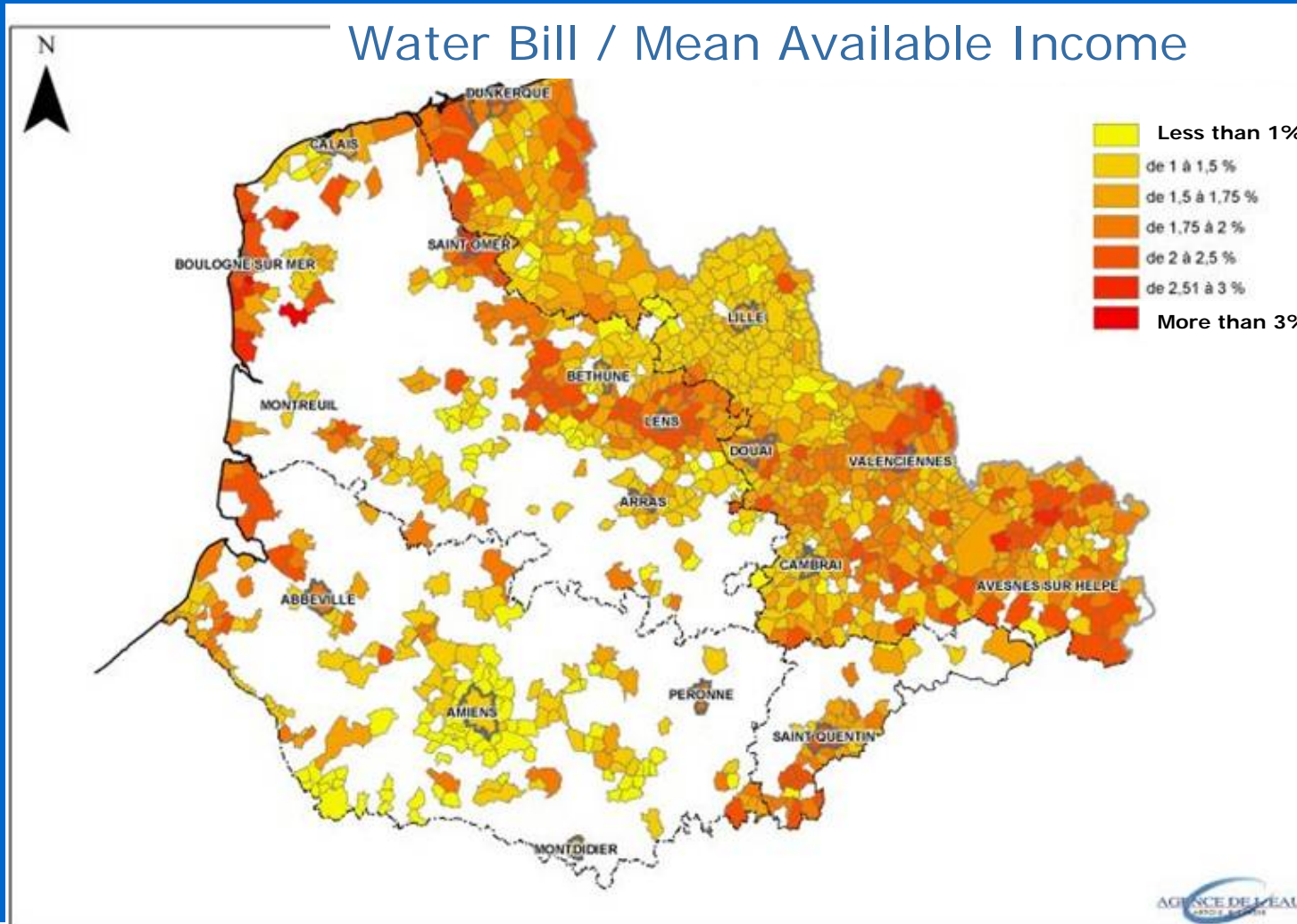


$$\frac{\text{Mean Water bill (all services)} \\ \text{(price paid for 120m3 in a year)}}{\text{Mean available income per household}}$$

	Mean available income per household (A)	Mean Water invoice per household (120m3/year) (B)	B/A
Aisne	23 499	455	1,94%
Nord	24 314	366	1,51%
Pas de Calais	23 194	428	1,85%
Somme	23 796	382	1,61%

Figure 2 : comparison of the mean water invoice per household with the mean available income per household

2. POM & RBMP : looking for indicators Comparison at municipality level

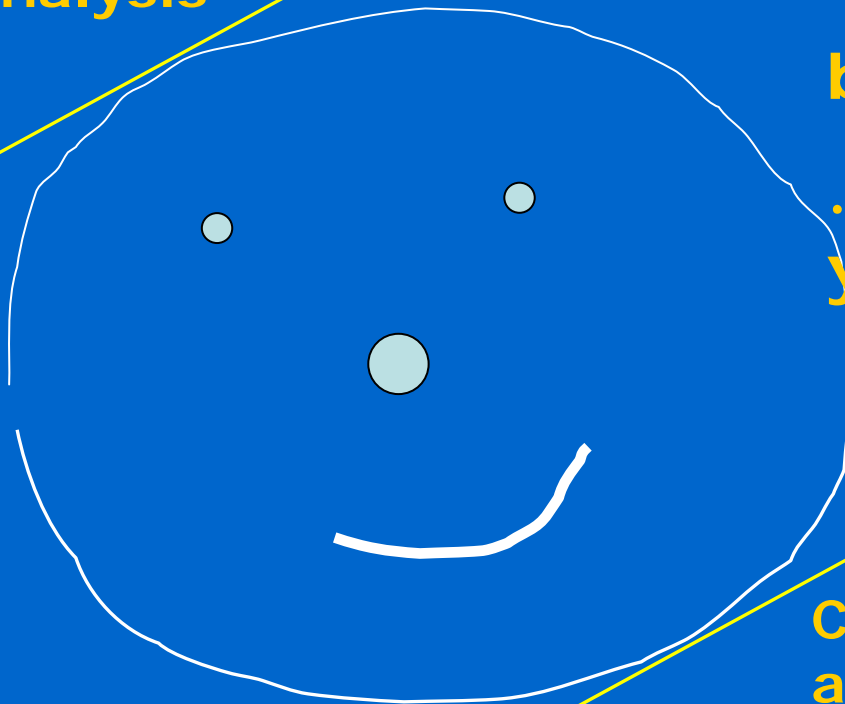
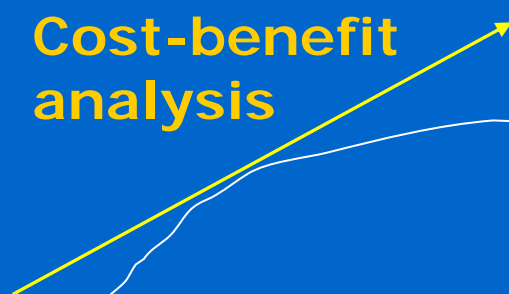


3. Discussion & conclusions

- development of equivalent indicators for other economic sectors (e.g. cost of measures for specific industrial sectors,...)
- first scanning of potential disproportionate costs and then cost-benefit analysis

Environmental Objective

Cost-benefit
analysis



Don't worry,
be happy !

.....and thanks for
your attention !

Cost-effectiveness
analysis



Cost

