



REPUBLIC OF CROATIA
MINISTRY OF REGIONAL DEVELOPMENT
FORESTRY AND WATER MANAGEMENT



Implementation of the Water Framework Directive

« EURO INBO 2011 »

9th EUROPEAN CONFERENCE

ON THE WATER FRAMEWORK DIRECTIVE IMPLEMENTATION

September 2011 , Oporto (Portugal)

Republic of Croatia



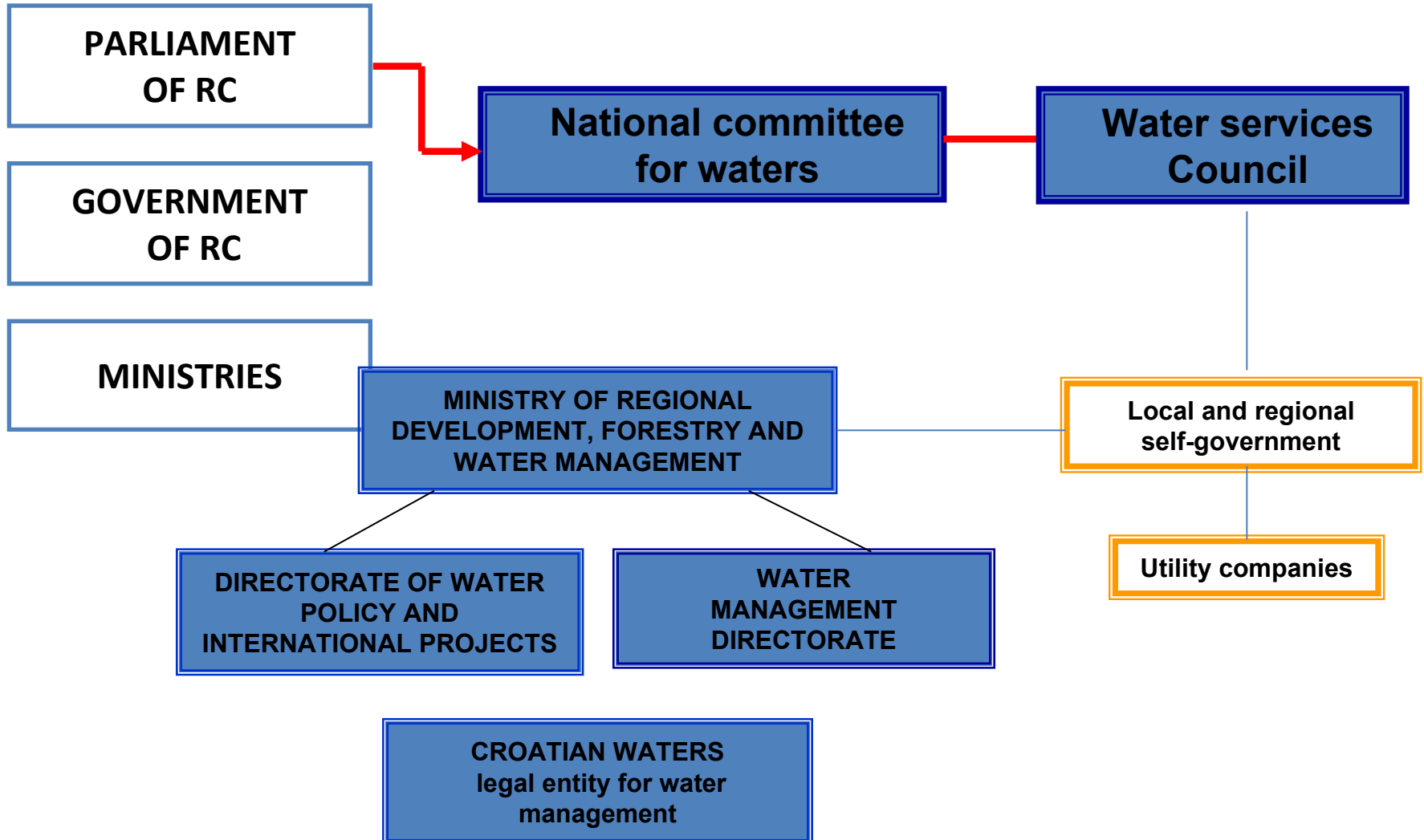
- Territory: 88 166 km²
 - ➡ 56 552 km² land
 - ➡ 31 614 km² sea
- Land border: 2028 km
- Water sources:
 - ➡ 5th place in Europe
 - ➡ 42nd in the World

EU Accession Process



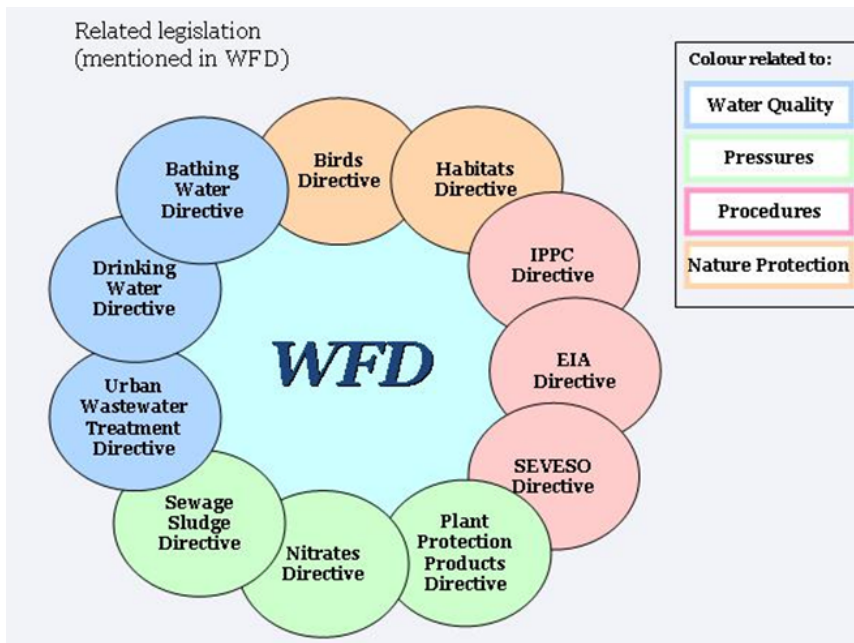
2001 -signed 2005 - ratified	<i>Stabilisation and Association Agreement</i>
21 February 2003	<i>Application for full membership</i>
18 June 2004	<i>Official “candidate” status for EU membership</i>
3 October 2005	<i>Accession negotiations - officially opened</i> <ul style="list-style-type: none">•accepted obligation for cooperation with the EC and MS with regard to water management issues•Republic Croatia is also committed to complete the harmonization of water legislation with the <i>acquis communautaire</i>
2005 - 2006	<i>Screening – analysis of legislative alignment</i>
2009 - 2010	<i>Technical consultation</i>
19 February 2010	Chapter 27–Environment - <i>Negotiations, formally opened</i>
22 December 2010	Chapter 27–Environment - <i>temporarily closed</i>
30 June 2011	Accession negotiations - <i>formally closed</i>
17 September 2011	Treaty of Accession
1 July 2013	Expected date of accession

Institutional framework of water management



Policy framework

- ❑ Water Management Strategy (2008)
- ❑ Water Act (OG 153/09)
- ❑ Water Management Financing Act (OG 153/09)
- ❑ 47 pieces of subordinate legislation (2010 - 2011)



- ❑ harmonization of national water legislation with WFD and other water directives
- ❑ transparent system of water management
- ❑ clear responsibility and obligations



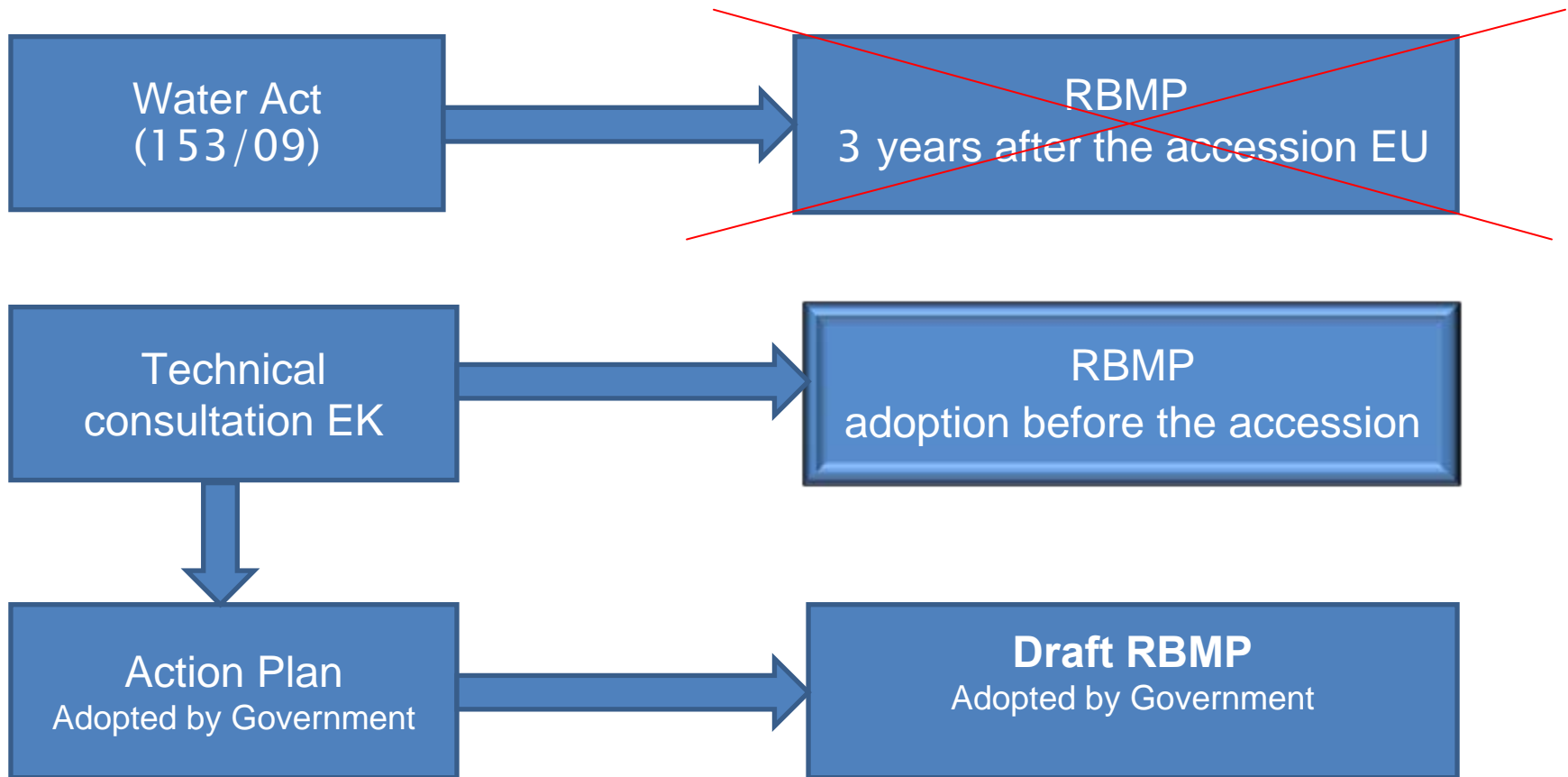
Vodno područje rijeke Dunav

Područje podsliva rijeka Drave i Dunava

Područje podsliva rijeke Save

**Danube River Basin District
Adriatic River Basin District**

River Basin Management Plan



Features of the first RBMP

RBMP 2012 – 2015

The first cycle will not last for six years, because we need to fit in a second one with all other member states

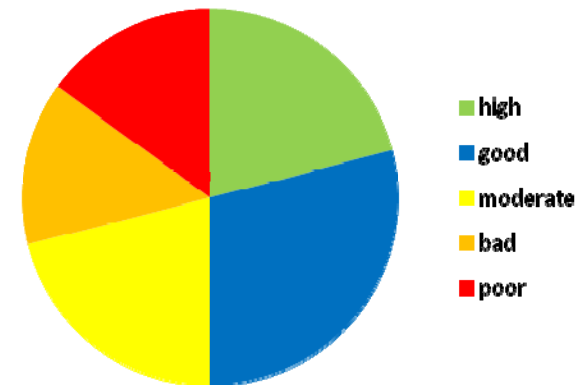
Procedure of the public consultation and information



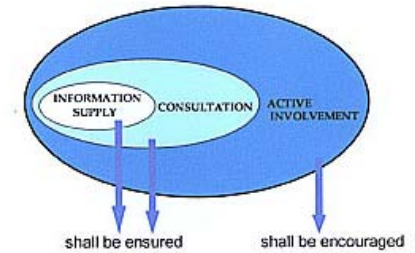
Strategic environmental impact assessment procedure

Evaluation of the water status

- ❑ Obligations and normative rules for evaluation of the water state have been taken from the WFD and are related to the waters above a given magnitude threshold:
 - ❑ river catchment area with over 10 km²
 - ❑ lakes with a surface above 0.5 km²
 - ❑ aquifers from which is possible to draw more than 10 m³/day
 - ❑ water supply for more than 50 people
 - ❑ those that significantly affect a surface ecosystem



Public Participation



Websites of the MRDFWM and CW -March 2011

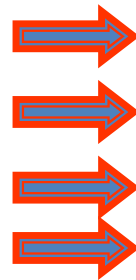
- the draft RBMP
- information on ability of public insight into the draft Plan, the address and time when insight can be achieved
- the address and deadline of 6 months for submission of written proposals and opinions

Presentations and discussion

- government bodies and public institutions
- educational and scientific institutions

Public hearings for both districts

Stakeholder consultations:



Economy sector

Water utility sector

Agriculture

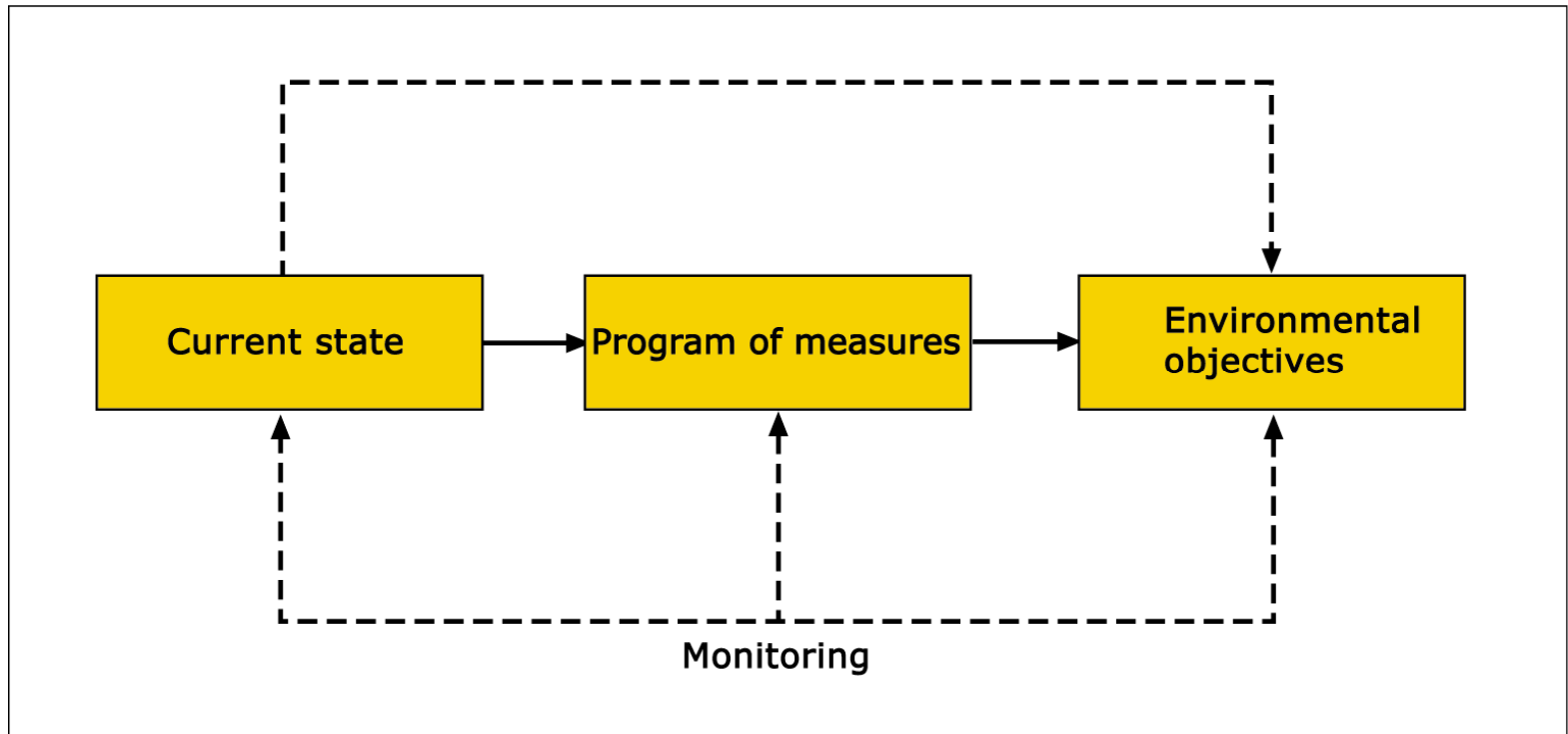
Nature protection

River Basin District Councils

A River Basin District Council is established for each river basin district and it consist of **26 members**:
representatives of:

-  counties
-  cities
-  municipalities
-  industrial polluters
-  water concessionaires
-  suppliers of water services
-  farmers
-  NGOs





WFD will be implemented through the River Basin Management Plan for the Danube river basin district and the Adriatic river basin district

International Conventions and Agreements

Convention on the Protection and Use of Transboundary Watercourses and International Lakes (Helsinki Convention, 1994)

Republic of Croatia

Convention on Cooperation for the Protection and Sustainable Use of the Danube River (1996.)

Convention for the Protection Of The Mediterranean Sea Against Pollution (Barcelona convention 1993)

Danube River Basin District

Framework Agreement on the Sava River Basin

Drava and Dunav sub-basin

Adriatic River Basin

Sava sub-basin



Ružica Drmić, Director of Directorate for Water Policy and International Projects
Ministry of Regional Development, Forestry and Water Management
ruzica.drmic@voda.hr