



# WFD implementation at half time in Hungary

József Gayer



Ministry of  
**Environment and  
Water**



Környezetvédelmi  
és Vízügyi  
Minisztérium

# Contents



- **Working environment**
- **WFD related projects**
- **Status of RBMP**
- **Conclusions**

## Governmental decrees

- on groundwater protection,
- on surface water protection,
- on river basin management (RBMP, PoM).



## Ministerial decrees

- on monitoring and assessment of groundwaters,
- on monitoring and assessment of surface waters.



# Interministerial coordination mechanism

## Ministry of Environment and Water



**NGOs**

**Justice**

**Health**

**PM's  
office**

**Economy**

**Finance**

**Local Governments**

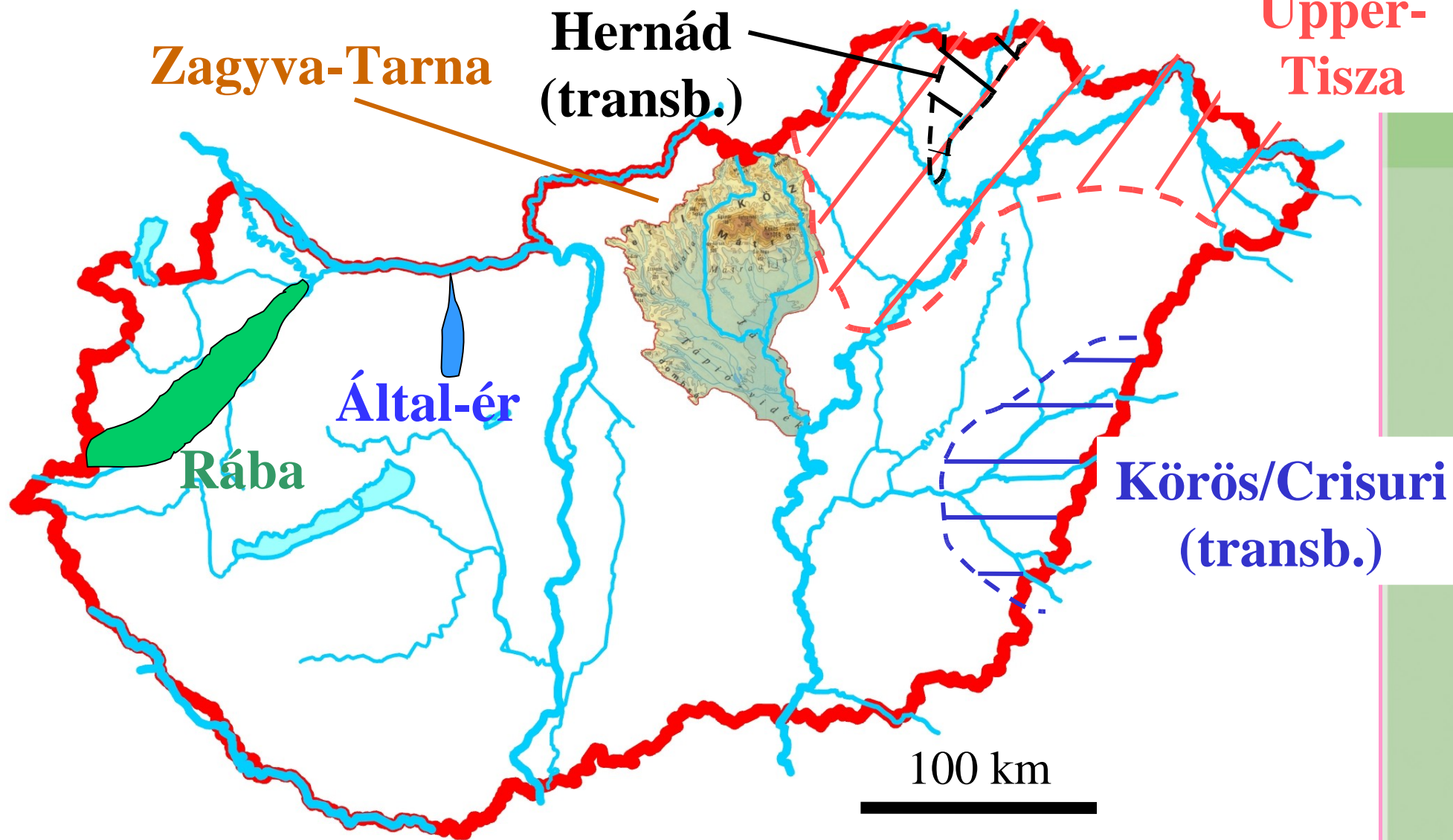
**Foreign Affaires**

**Agriculture**



Környezetvédelmi  
és Vízügyi  
Minisztérium

# Pilot projects



# EU Transition Facility support

## *Promoting the implementation of Water Framework Directive Phase II. (2006-2007)*

Objectives to develop / set up:

- (1) an economic-analytical system for the selection of the most cost-effective PoM,
- (2) a Pilot River Basin Management Plan (Upper-Tisza),
- (3) a PP strategy,
- (4) four water information centres.

[www.vkiprojekt.hu](http://www.vkiprojekt.hu) EN summary

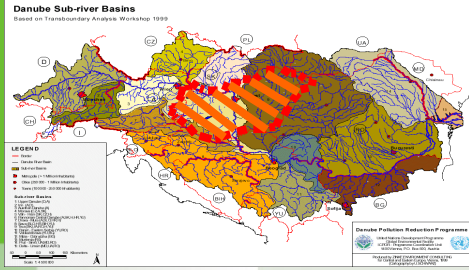
# Support system

**to facilitate harmonised planning at every level**

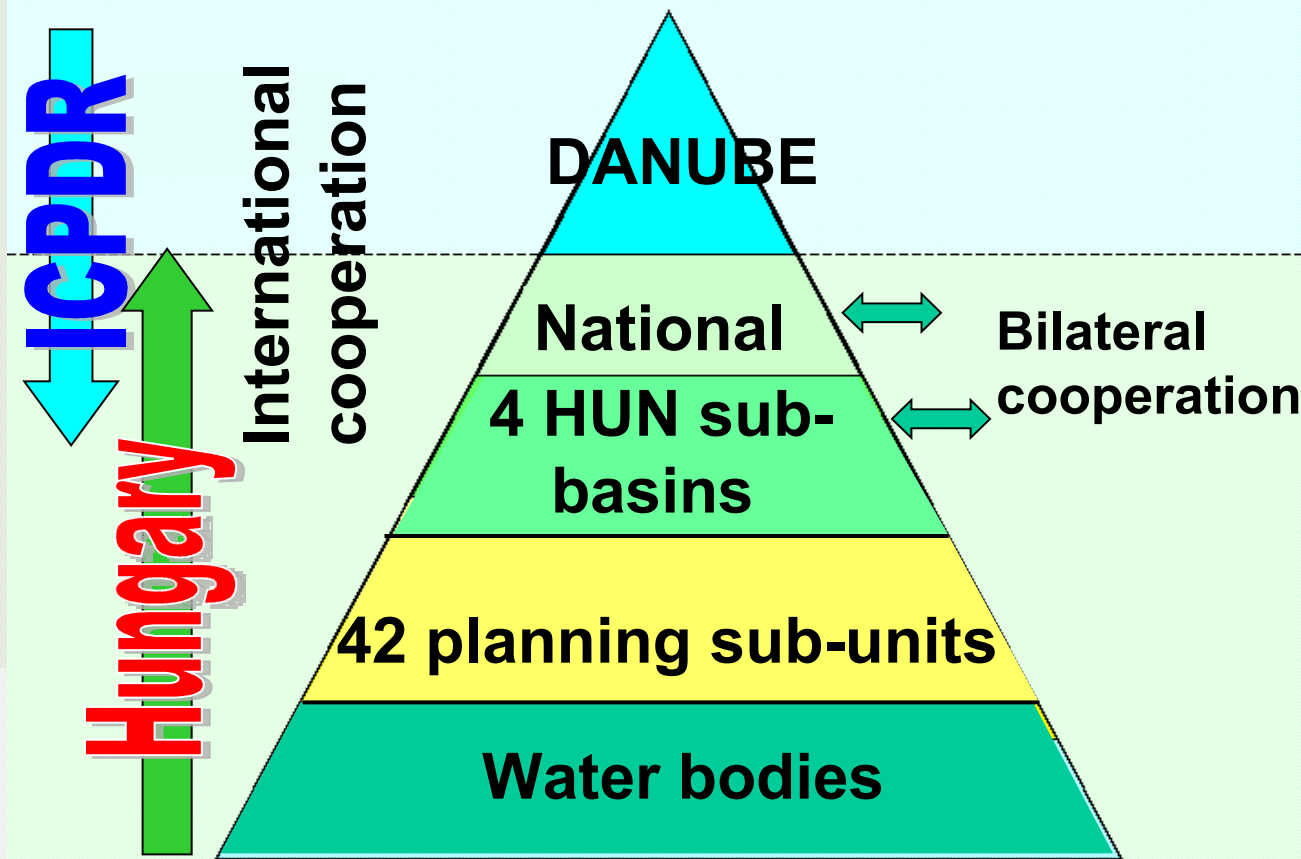
- **Uniform principles (importance and approach of problems)**
- **Common criteria**
- **Clear aspects for decisions**
- **Uniform economic methods**
- **Centralised operation, continuous development**

**Optional use, not user friendly**

**Catalogue of 63 measures!!!**



# Main structure of RBMP



Area / no.
800,000 km <sup>2</sup>
93,000 km <sup>2</sup>
6 - 46,000 km <sup>2</sup>
≈ 2200 km <sup>2</sup>
1000+ pc.

Be as specific as needed and as general as possible!!!  
 Iterative process of „top-down” and „bottom up” approach





Környezetvédelmi  
és Vízügyi  
Minisztérium

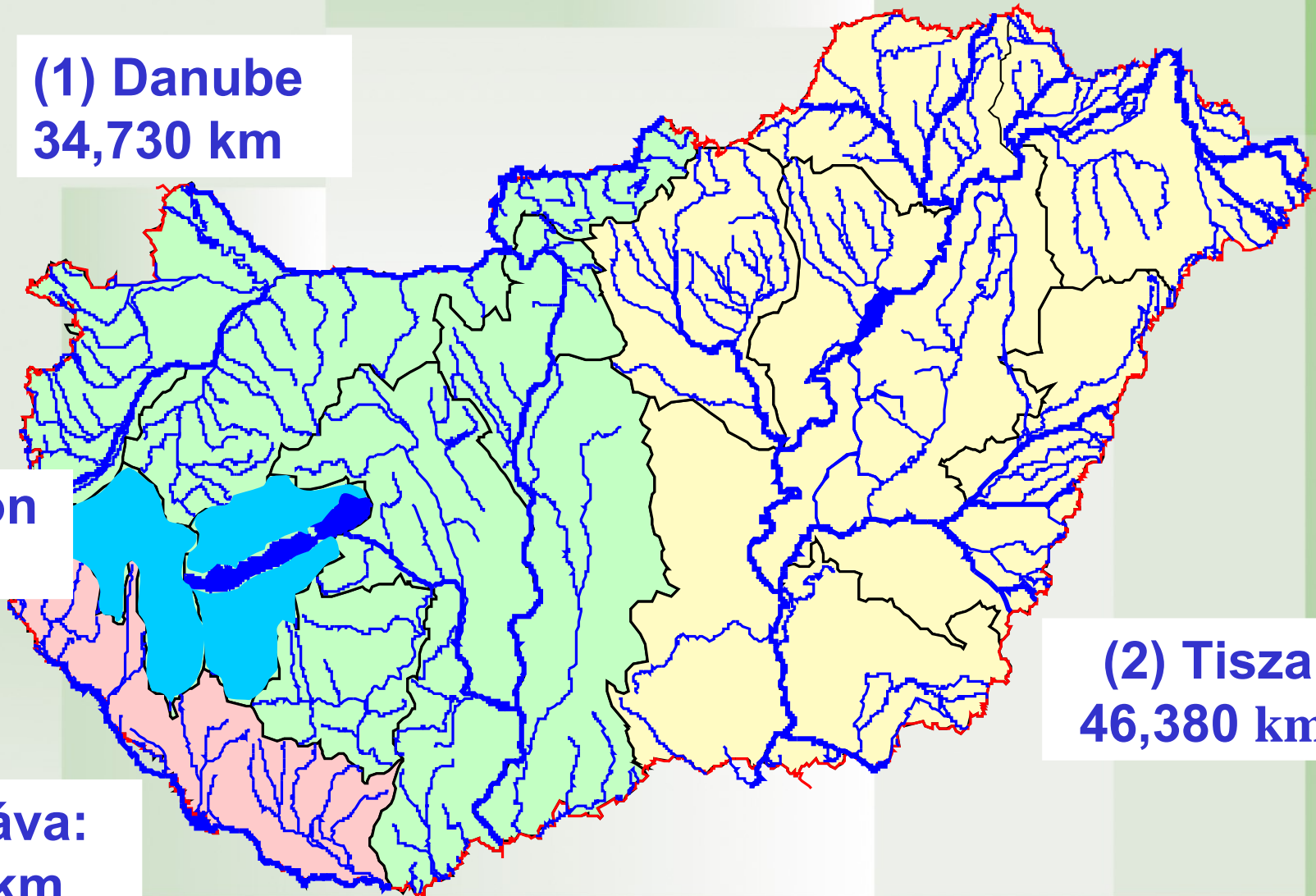
# Levels of RBM planning

**(1) Danube**  
**34,730 km**

**(4) Balaton**  
**5,775 km**

**(3) Dráva:**  
**6,145 km**

**(2) Tisza:**  
**46,380 km**



# Levels of RBM planning

**42 planning sub-units**

**(1) Danube: 16**

**€ 10 million  
project**

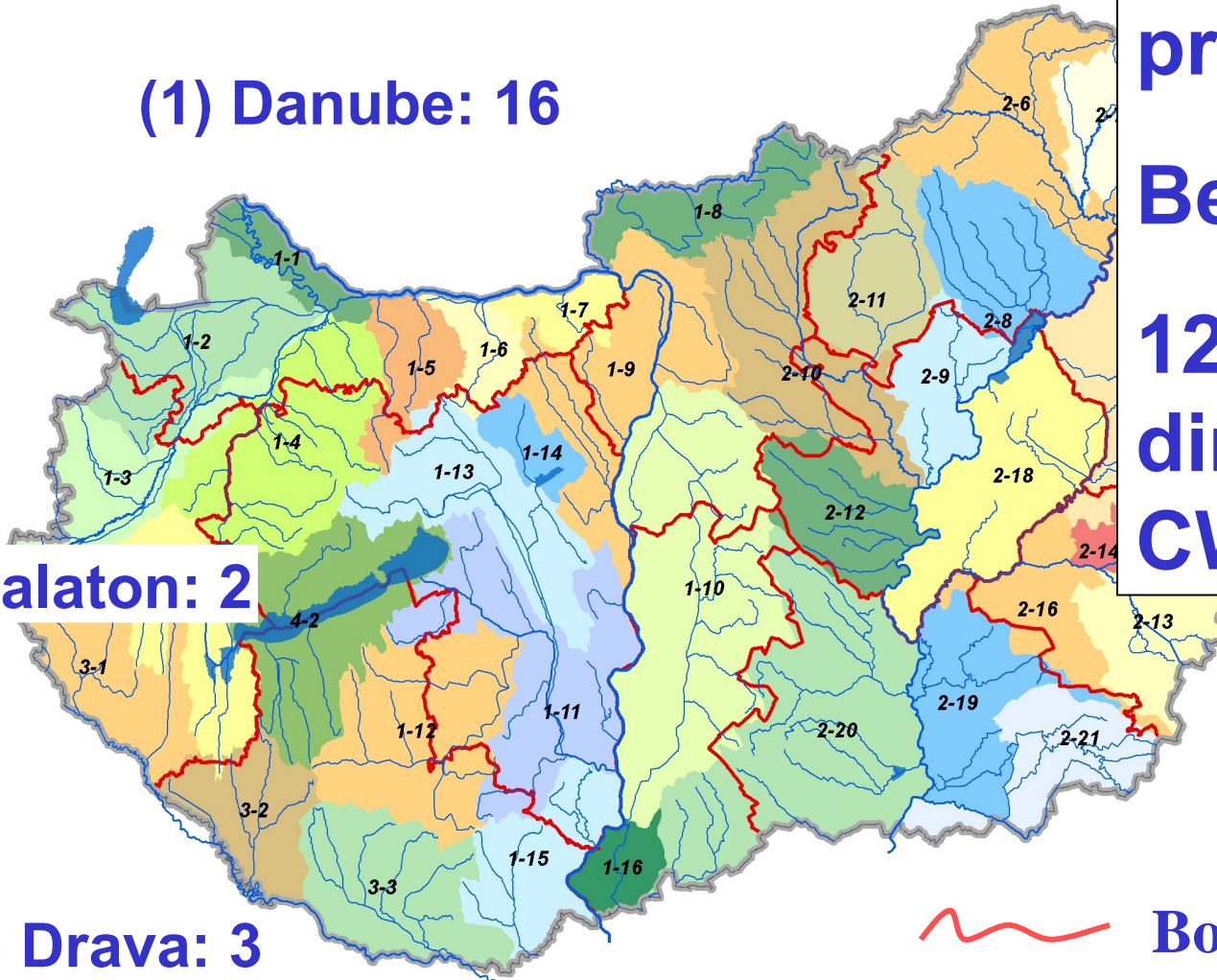
**Beneficiaries:  
12 E&W  
directorates &  
CWED**

**(4) Balaton: 2**

**(2) Tisza: 21**

**(3) Drava: 3**

 **Border of E&W  
Directorates**





**Infringement (formal letter 2007/2249)**

**Other reasons as well:**

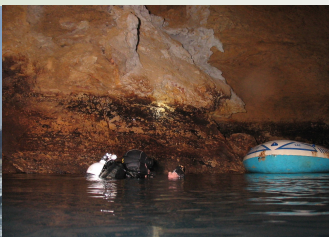
- **GW directive,**
- **lessons of pilot projects,**
- **results of PP**

**Amendment of gov. & min. decrees 2008**

# Conclusion



- Unprecedented exercise
- Costly but unavoidable
- Hungary is gladly challenged with the implementation and succeeded to meet the requirements so far
- Make better use of project results
- Open process (PP & regular fine-tuning)





A scenic view of a calm river or lake surrounded by dense green trees. The water is still, reflecting the surrounding foliage and the sky. The text "Thank you for your attention" is overlaid in white, bold, sans-serif font across the middle of the image. The foreground shows the edge of a wooden boat or dock.

**Thank you for your attention**