



Commissariat
International
de l'Éau

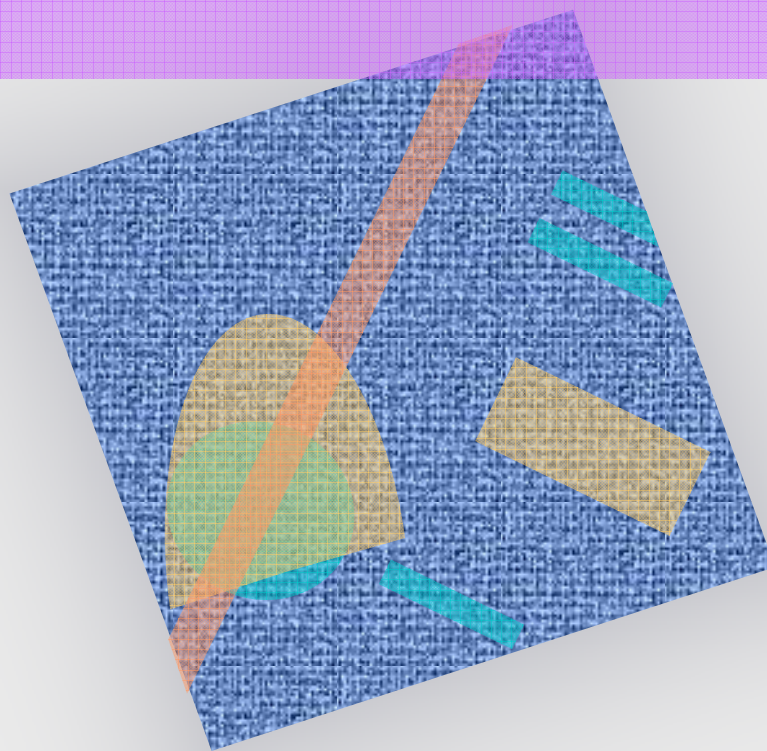


I.N.B.O.

International Network of Basin Organizations



Om River Action Plan



Sergey KOSTAREV

CEENBO

Irtysk River Steering Committee

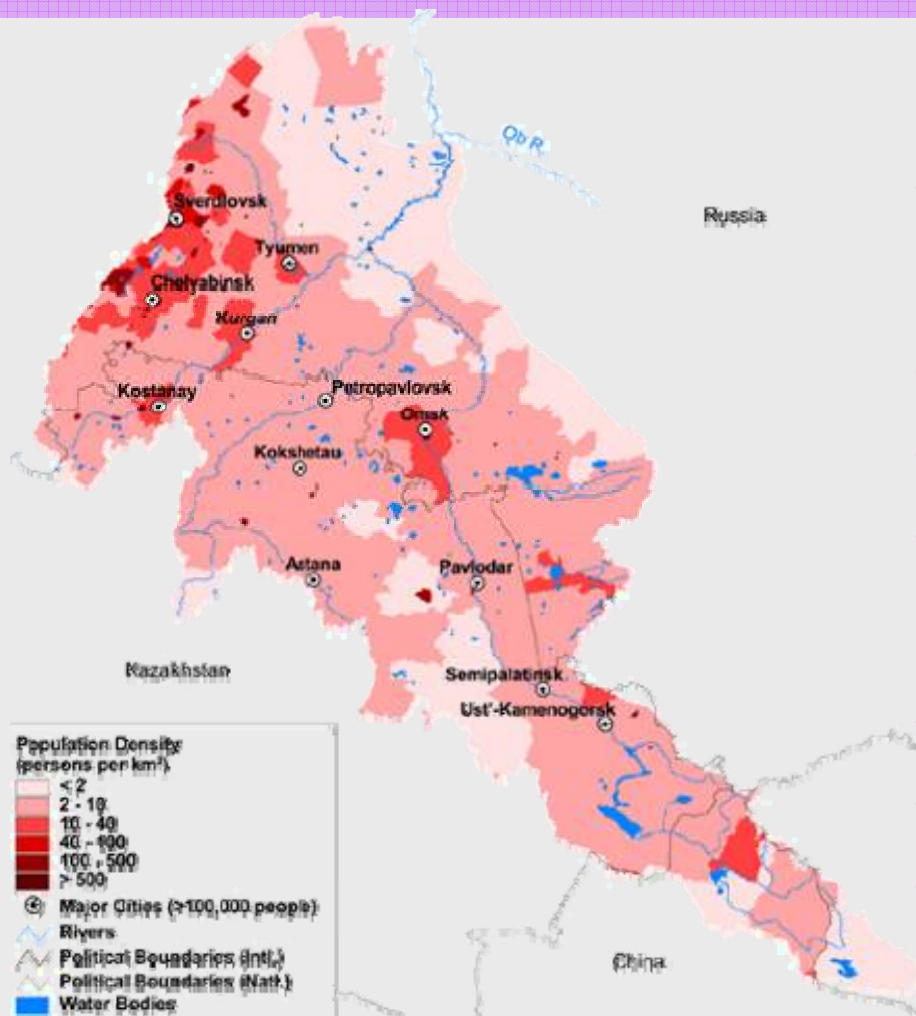
Omsk Law Institute, Russia



Környezetvédelmi
és Vízügyi
Minisztérium

7th WORLD GENERAL ASSEMBLY INBO / DEBRECEN, HUNGARY, 7-9 JUNE 2007

Irtysch River Basin



Catchment's area

- 1.65 million sq. km

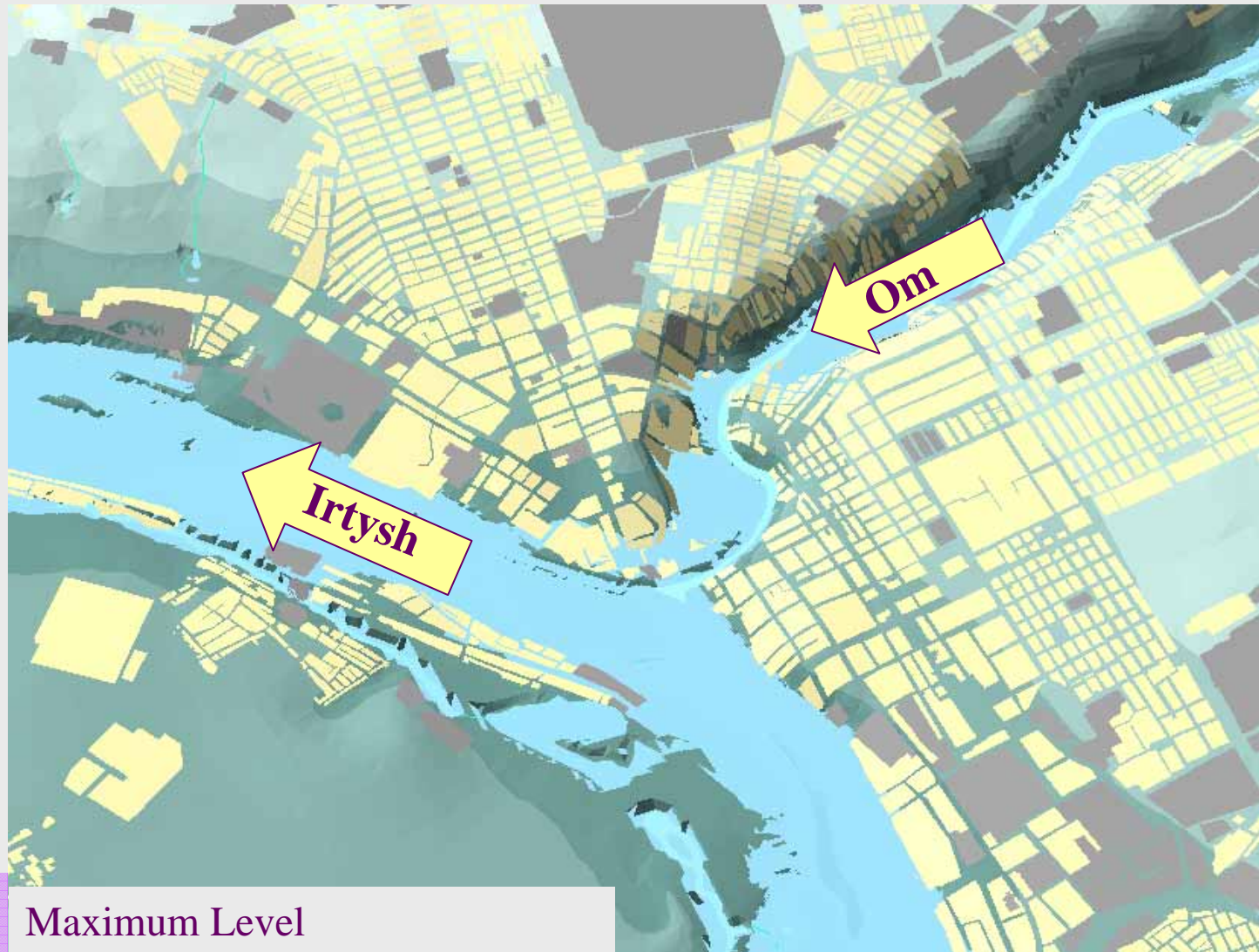
Irtysch length - 4,370 km:

- China: 525 km,
- Kazakhstan: 1,835 km,
- Russia: 2,010 km.

Economy

- Power energy
- Agriculture
- Oil production

Rivers in Omsk



Flood in Omsk (1928)



Om River mouth in Omsk



Om River

- **Overview**

- Om = quiet (translated from Turkic)
- Large tributary of the Irtysh river
 - Length: more than 1,090 km
 - Catchment's area: 52,400 km²
- River valley
 - very winding and not branchy
 - 0,25-18 km wide
- Banks – steep and bluffs



Om River in Omsk

- **Om in Omsk**
 - Omsk named as city at Om River
 - Historical and architectural centre
 - Place for recreation



Om River in Omsk

- **Polluting sources in Omsk city**

- **Waste discharge points**

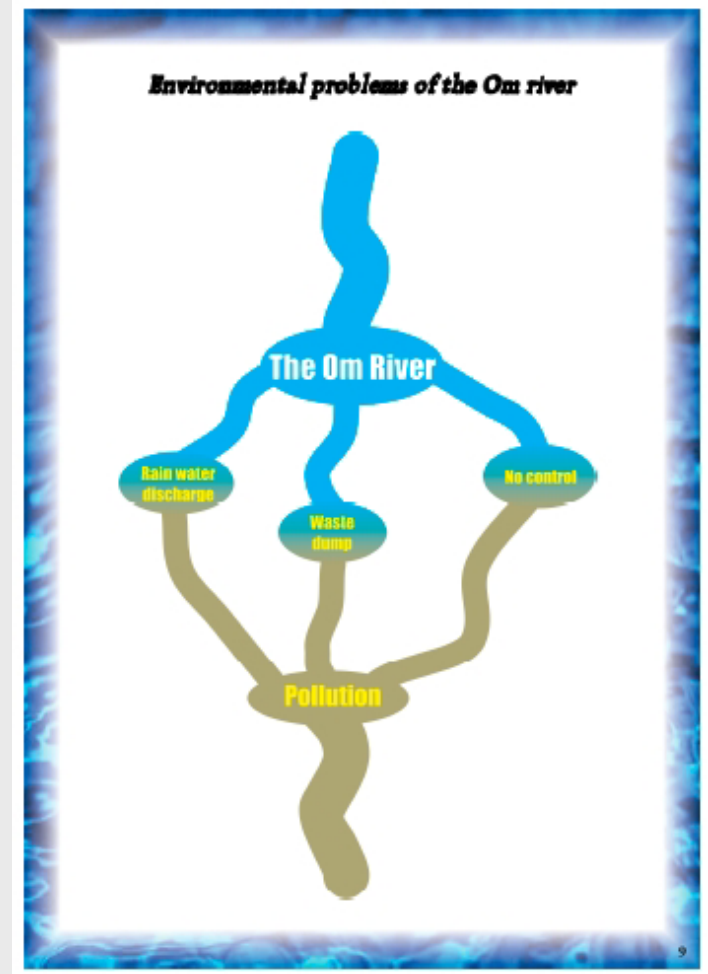
- Total – 44
- Under control – 12

- **Illegal household waste tips – 20**



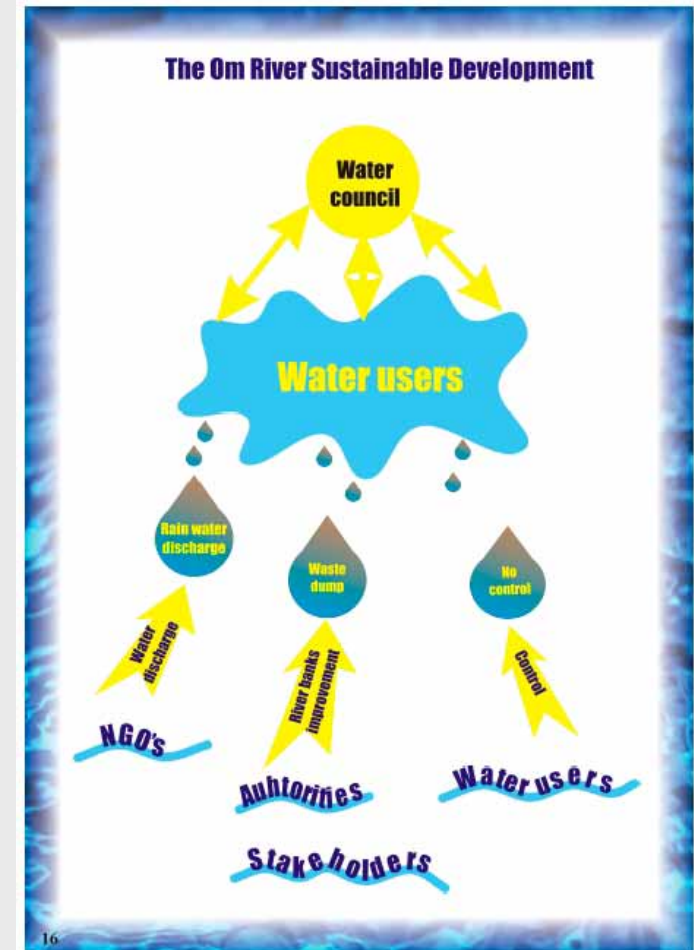
Om River action plan

- **Main problem – pollutions:**
 - Rain water discharge
 - Waste dumps
 - No control



Om River action plan

- **Main policies**
 - Liquidation of illegal dumps
 - Limiting of industrial and rain water discharge
 - Establishing River Council
- **Actors**
 - Local authorities
 - Water users
 - Public (NGO and citizens)



Om River action plan

- **Public participation**
 - People in our city does not motivated for this
 - It is necessary drive public
 - Improve inter stakeholder interactions



Om River action plan

- **Public partnership actions**
 - Meetings and round tables
 - Banks cleaning campaign
 - Thematic performances and competitions



Lessons learned

- **International good practice is useful for development**
 - International Network organization (INBO, CEE NBO) decrease management risks
 - increase attractive for key participants.
- **Public participation**
 - It is absolutely necessary for effective management
 - Public partnership is a first stage for involved people
- **Partnership (till Water Council) should include:**
 - Local authorities (governmental and municipal)
 - Non-governmental organizations
 - Key water users

Thank you for your attention !

www.ecomsk.ru

