

# Integrated Water

# Resources Management

# in Cambodia

# Stung Sen Pilot Project



Établissement public du ministère chargé du développement durable



ÉTABLISSEMENT PUBLIC DU MINISTÈRE EN CHARGE DU DÉVELOPPEMENT DURABLE



Office International de l'Eau

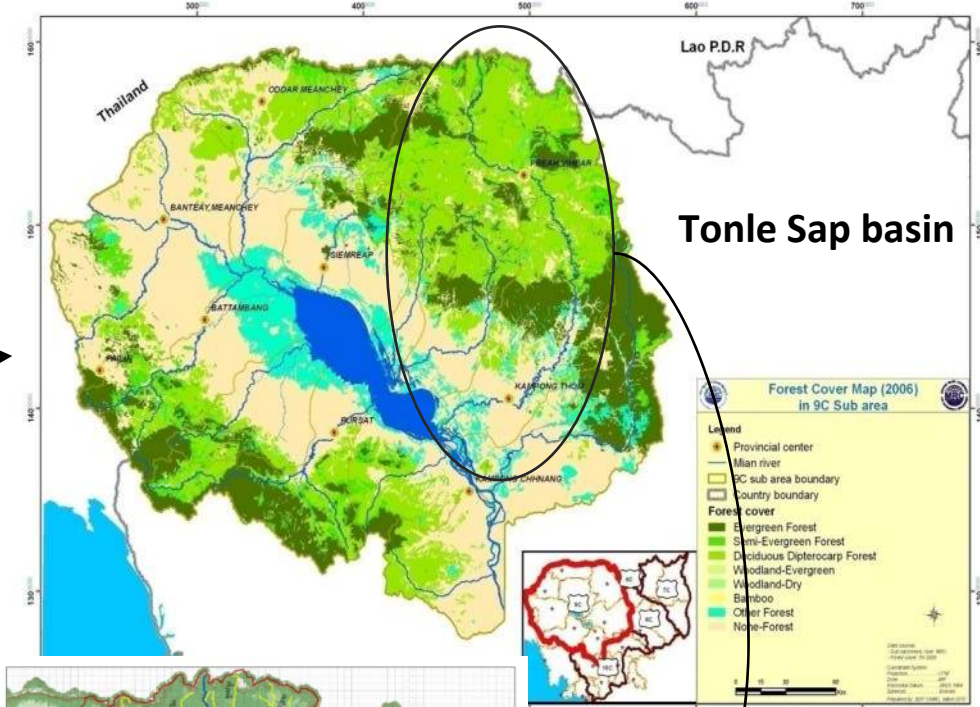
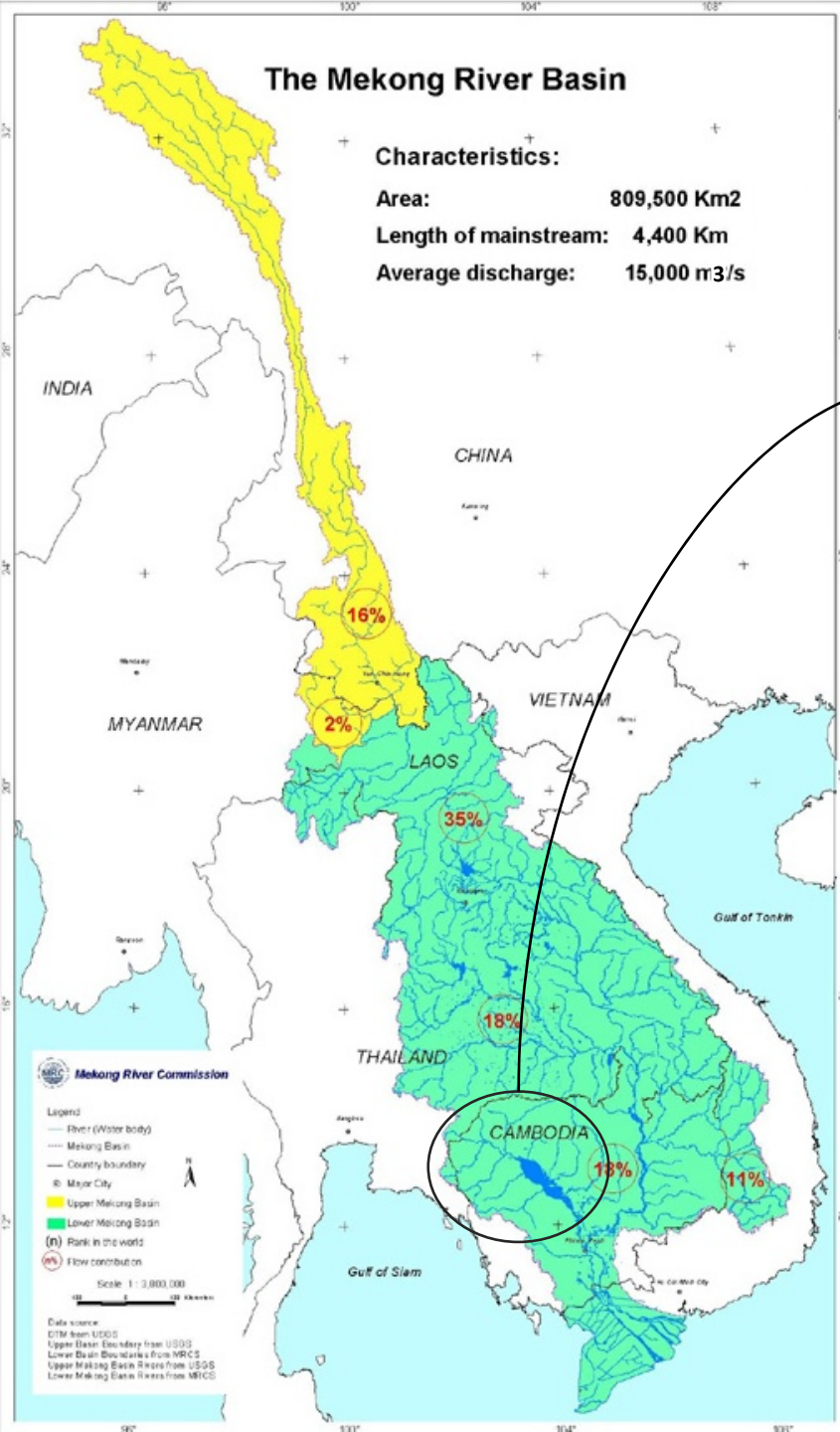


- **Objective:** Capacity building, technical assistance and experiences exchange on elements for Integrated Water Resources Management on the Stung Sen river basin (2013-2014).
- Key words: Mekong River, Tonle Sap Great lake, Stung Sen: affluent of Tonle Sap Great lake, Cambodia
- First topical Round Table 1: Water resources management should be one of the targets of post 2015 Sustainable Development

# The Mekong River Basin

Characteristics:

Area: 809,500 Km<sup>2</sup>  
 Length of mainstream: 4,400 Km  
 Average discharge: 15,000 m<sup>3</sup>/s



## Tonle Sap basin



## Stung Sen Basin

Catchment surface: 16,344 km<sup>2</sup>  
 Total length: 520 km  
 Average discharge: 325 m<sup>3</sup>/s

- **Objective:** Capacity building, technical assistance and experiences exchange on elements for Integrated Water Resources Management on the Stung Sen river basin (2013-2014).
- The different activities are:
  - First basin characterization: bibliographic study and field surveys (first step of the River Basin Management Planning Process).
  - Establishment of a Basin Committee for the Stung Sen (later included in the Tonle Sap Lake Basin Committee): stakeholders analysis.
- Stung Sen as a model for the non anthropized sub-basins of the Mekong .

# Medium term objective: integrated management of the Tonle Sap lake water resources

## Taking into account:

- Demographic pressure
- Deforestation, agriculture and fishery activities
- Climate change – flow alteration
- Pollution (industrial and domestic) and impact of the dams and reservoirs
- Water allocation conflicts
- Institutional and legislative framework

- ANNEXES

# Tonle Sap Lake Water Balance

Stung Sen river contribute :

- 10.25 km<sup>3</sup> of the total tributaries
- 35% of the total tributaries

<b>Total Inflow</b>	<b>82.1</b>
from:	
- Mekong	49.3 %
- Overland	2.6 %
- Tributaries	35.5 %
- Rain	12.6 %

Tonle Sap Water Balance (in yearly averages) [km<sup>3</sup>]

