



The Water Framework Directive

– Sharing experiences and meeting future challenges

Draft River Basin Management Plans – Focus on Public Participation

North Western and Neagh Bann River Basin
Districts

Dr Tony McNally
RBD Coordinator
Donegal County Council
Ireland

River Basin Districts

EIGHT RBDs

- Neagh Bann IRBD
- North Western IRBD
- Shannon IRBD
- North Eastern RBD
- Eastern RBD
- South Eastern RBD
- South Western RBD
- Western RBD



Authorities

- Monaghan CC / DOE NI
- Donegal CC/ DOE NI
- Limerick CC/ DOE NI
- DOE NI
- Dublin CC
- Carlow CC
- Cork CC
- Galway CC

Implementation Structure

- **34 local authorities cooperate across 7 River Basin Districts**
- **Coordinating authority**
- **Consultancy support**
- **National coordination and technical committees to ensure consistency**
- **Ireland & Northern Ireland Coordination Group**
 - **NS SHARE Project (INTERREG IIIa)**
- **River Basin Advisory Councils (Art.14 public participation)**
 - **Representatives: Political, Environmental NGOs, Business, Agriculture, Recreation, Community and Academic**
 - **Role is to advise and make recommendations**
 - **Public authorities must take account of input from Advisory Councils**

Participation Structures

Stakeholders

- Sectoral Groups – represented through AC and various local/regional fora. Annual national AC meeting.
- Relevant Public Authorities – listed in national legislation (SI 722) represented on RBD Public Authorities Forum and Management Groups

Includes: **Rel Gov Depts, EPA, Local & Regional Authorities, Fisheries Boards, Geological Survey, Teagasc, RPII, Marine Institute, Electricity Supply Board, Waterways Ireland, Tourism Ireland, Heritage Council, HAS, LGCSB, Commissioners of Public Works**

Public Consultation – draft RBMPs

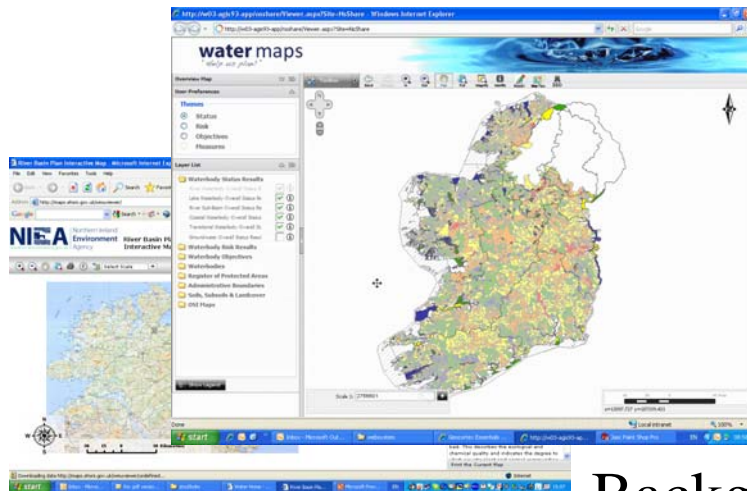
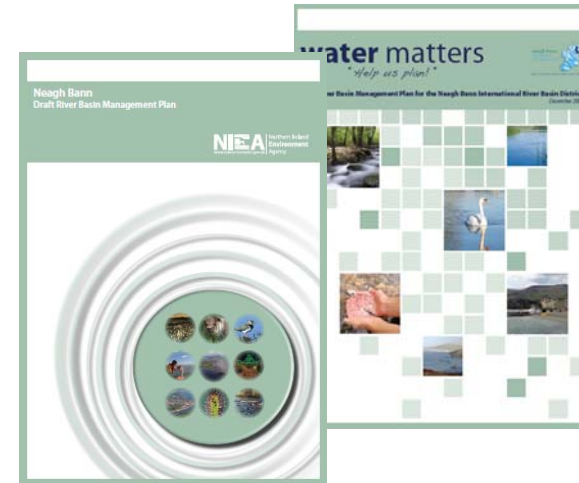
- Dec 08 - Advertised in national media, RBD/LA/EPA/WFDIreland websites. Proactive circulation – email shots / hard copies to sectoral interest groups, Information Days. Mapping tools seen as a key element of consultation (***WaterMaps*** in Ireland / **River Basin Plan Interactive Map** in Northern Ireland).

Overview of Draft Plan (Consultation Document)



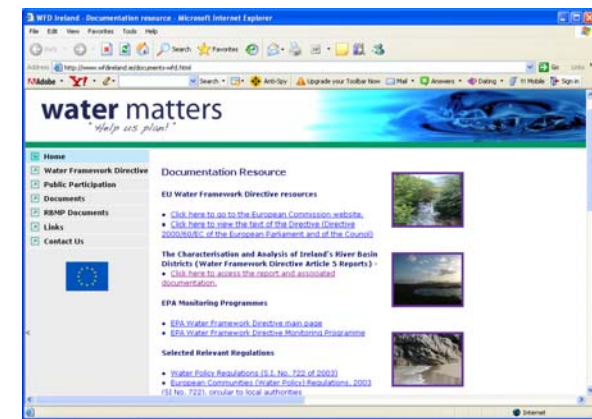
Working Together

Draft River Basin
Management Plan



Plan Viewer
(*WaterMaps*)

Background Documents
(wfdireland.ie)



<http://www.wfdireland.ie/>

Water Matters - Water Maps Mapping Information System - Home Page - Microsoft Internet Explorer

File Edit View Favorites Tools Help



Address <http://www.wfdireland.ie/maps.html>

Go Links >>

[Login](#) [News](#) [Terms & Conditions](#)

water matters

"Help us plan!"



- [Home](#)
- [Water Framework Directive](#)
- [Public Participation](#)
- [Documents](#)
- [RBMP Documents](#)
- [WaterMaps Map Viewer](#)
- [Links](#)
- [Contact Us](#)



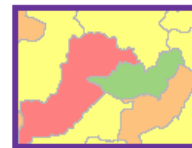
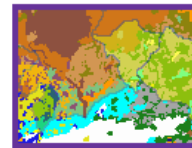
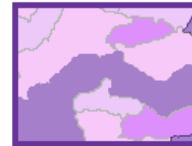
Water Maps - Mapping Information System to support draft River Basin Management Plans

In support of the draft River Basin Management Plan documentation, available on this website and the websites of the River Basin Districts, a mapping information system has been developed. This information system presents data on waterbody status, risks, objectives and measures, and presents this data as colour coded maps from which detailed waterbody reports are available.



Users of this system are strongly advised to review the on-line help & tutorial prior to using the mapping system. [Click here to access this resource.](#)

Click on the Water Maps Box below to access the system. Note that it will take a short while for the map viewer to open. Once opened use the navigation tools to go to your area of interest. Once you have zoomed in far enough the status maps will become visible. Use the Identify and Report tools to access the details for any waterbody or selection of waterbodies.



Waterbody status, risks, objectives and measures - waterbody reports

http://watermaps.wfdireland.ie/ - Microsoft Internet Explorer

File Edit View Favorites Tools Help

Back Forward Stop Home Search Favorites Refresh Print Mail W Y Z User

Address http://watermaps.wfdireland.ie/ Go Links >>

water maps

"Help us plan!"

Overview Map

Toolbox Back Forward In Out Pan Full Magnify Search Report

Preferences

Select Element

- Status
- Risk
- Objectives
- Measures

Select Waterbody

- River
- Lake
- Coastal
- Transitional
- Groundwater

Element Legend

Legend

- High
- Good
- Moderate
- Poor
- Bad
- Yet to be determined

Layer List

Scale 1: 3254910

Jump to Extent:

Scale bar: 0 25 50 Miles

x=29985.037 y=131328.686

Done Internet

Zoom - Mapping Detail appropriate to scale

http://watermaps.wfdireland.ie/ - Microsoft Internet Explorer

File Edit View Favorites Tools Help

Back Forward Stop Home Search Favorites Refresh Print Mail

Address: http://watermaps.wfdireland.ie/ Go Links

water maps
"Help us plan!"

Overview Map

Preferences

Select Element

- Status
- Risk
- Objectives
- Measures

Select Waterbody

- River
- Lake
- Coastal
- Transitional
- Groundwater

Element Legend

Layer List

- Waterbody Status Results
- Waterbody Risk Results
- Waterbody Objectives
- Waterbody Basic Measures
- Waterbodies
- Register of Protected Areas
- Administrative Boundaries
- Soils, Subsoils & Landcover
- OSI Maps

Scale 1: 273332

Jump to Extent:

Waterbody reporting

http://watermaps.wfdireland.ie/ - Microsoft Internet Explorer

File Edit View Favorites Tools Help

Back Forward Stop Home Search Favorites Print Mail

Address http://watermaps.wfdireland.ie/ Go Links

water maps
"Help us plan!"

Login

Overview Map

Preferences

Select Element

- Status
- Risk
- Objectives
- Measures

Select Waterbody

- River
- Lake
- Coastal
- Transitional
- Groundwater

Element Legend

Layer List

- Waterbody Status Results**
 - River Overall Status ⓘ
 - Lake Overall Status ⓘ
 - River Subbasin Overall Status ⓘ
 - Coastal Overall Status ⓘ
 - Transitional Overall Status ⓘ
 - Groundwater Overall Status ⓘ
- Waterbody Risk Results**
- Waterbody Objectives**
- Waterbody Basic Measures**
- Waterbodies**
- Register of Protected Areas**
- Administrative Boundaries**

Show Legend

Scale 1: 189418

Jump to Extent: x=0 y=0

Waterbody reporting

http://watermaps.wfdireland.ie/ - Microsoft Internet Explorer

File Edit View Favorites Tools Help

Back Forward Stop Home Search Favorites Print Mail New Tab

Address http://watermaps.wfdireland.ie/ Go Links

water maps

"Help us plan!"

Overview Map

Preferences

Select Element

- Status
- Risk
- Objectives
- Measures

Select Waterbody

- River
- Lake
- Coastal
- Transitional
- Groundwater

Element Legend

Layer List

- Waterbody Status Results
 - River Overall Status
 - Lake Overall Status
 - River Subbasin Overall Status
 - Coastal Overall Status
 - Transitional Overall Status
 - Groundwater Overall Status
- Waterbody Risk Results
- Waterbody Objectives
- Waterbody Basic Measures
- Waterbodies
- Register of Protected Areas
- Administrative Boundaries

Show Legend

Scale 1: 189418

Jump to Extent:

EX Q F DI FP MO SP PC PA O

Name: Owenea

Full Report

Hover on a symbol with the mouse pointer to view details for it

x=177679.022 y=392474.187

Waterbody reporting – Location and Status sheets

water matters
map and plan

Full Report for Waterbody Duntally

Legend

- High
- Good
- Moderate
- Poor
- Bad
- Yet to be determined

Draft River Basin Management Plans (RBMPs) have been published for all River Basin Districts in Ireland in accordance with the requirements of the Water Framework Directive. The WaterMaps viewer is an integral part of the River Basin Management Plan and provides access to information at individual waterbody level for all the River Basin Districts in Ireland.

The following report provides summary plan information about the selected waterbody (indicated by the pin in the map above) relating to its status, risks, objectives, and measures proposed to retain status where this is adequate, or improve it where necessary. Waterbodies can relate to surface waters (these include rivers, lakes, estuaries (transitional waters), and coastal waters), or to groundwater. Other relevant information not included in this report can be viewed using the WaterMaps viewer, including areas listed in the Register of Protected Areas.

You will find brief notes at the bottom of some of the individual report sheets that will help you in interpreting the information presented. More detailed information can be obtained in relation to all aspects of the RBMPs at www.wfdireland.ie.

Date Reported to Europe: 22/12/2008
Date Report Created 15/05/2009

water matters
map and plan

Status Report

WaterBody Category: Subbasin Waterbody

WaterBody Name: Duntally

WaterBody Code: IE_NW_38_1928

Overall Status Result: Good

STATUS ELEMENT DESCRIPTION	Result
EX Code of Waterbody from which status has been extrapolated	
BIOLOGICAL ELEMENTS	
Q Macroinvertebrates (Q-Value) - bottom dwelling animals	Good
F Fish - species present, age structure and abundance	n/a
DI Phytobenthos (Diatoms) - microscopic algae	n/a
FPM Status as determined by the Fresh Water Pearl Mussel (Margaritifera)	n/a
SUPPORTING ELEMENTS	
MOR Hydromorphology - Waterbody structure and flow regime	n/a
SP Specific Pollutants - chemical pollution	n/a
PC Physico-Chemical - General physical and chemical elements	n/a
CHEMICAL ELEMENTS	
PAS Chemical Status	n/a
OVERALL ECOLOGICAL STATUS	
O Overall Ecological Status - worst case of all above	Good

Status

By 'Status' we mean the condition of the water in the waterbody. It is defined by its chemical status and its ecological status, whichever is worse. Waters are ranked in one of 5 status classes: High, Good, Moderate, Poor, Bad. However, not all waterbodies have been monitored, and in such cases the status of a similar nearby waterbody has been used (extrapolated) to assign status. If this has been done the first line of the status report shows the code of the waterbody used to extrapolate.

You can read more about status and how it is measured in our RBMP Document Library at www.wfdireland.ie (Directory 15 Status).

Date Reported to Europe: 22/12/2008
Date Report Created 15/05/2009

Waterbody reporting – Risk Sheets

water matters
think and plan!

Risk Report

WaterBody Category: Subbasin Waterbody
WaterBody Name: Duntally
WaterBody Code: IE_NW_38_1928
Overall Risk Result: 2b Not At Risk

Risk Test Description **Risk**

POINT RISK SOURCES

RP1 Waste Water Treatment Plants (2008)	2b Not At Risk
RP2 Combined Storm Overflows from the Sewerage System	2b Not At Risk
RP3 IPPC licences - Industry licensed by EPA (2008)	2b Not At Risk
RP4 Section 4 licences - discharges to waters (2008)	2b Not At Risk
RPO Overall Risk from Point Sources - Worst Case above (2008)	2b Not At Risk

DIFFUSE RISK SOURCES

RD1a Type of land use - Proportion Pasture/Arable/Urban (2008)	2b Not At Risk
RD2a Road Wash - Soluble Copper	2b Not At Risk
RD2b Road Wash - Total Zinc	2b Not At Risk
RD2c Road Wash - Total Hydrocarbons	2b Not At Risk
RD3 Railways	2b Not At Risk
RD4a Forestry - Acidification (2008)	2b Not At Risk
RD4b Forestry - Suspended Solids (siltation) (2008)	2b Not At Risk
RD4c Forestry - Eutrophication (nutrient loss) (2008)	2a Probably Not At Risk
RD5a Unsewered Areas - Pathogens e.g. bacteria/viruses (2008)	2a Probably Not At Risk
RD5b Unsewered Areas - Phosphorus (2008)	2b Not At Risk
RD5 Overall worst case of Unsewered Areas (2008)	2b Not At Risk
RD6a Agriculture - Arable	2b Not At Risk
RD6b Agriculture - Sheep Dip	2b Not At Risk
RD6c Forestry - Dangerous Substances (Chemicals)	2b Not At Risk
RDO Overall Risk from Diffuse Sources - Worst Case Above (2008)	2a Probably Not At Risk

Date Reported to Europe: 22/12/2008
Date Report Created 15/05/2009

water matters
think and plan!

MORPHOLOGICAL RISK SOURCES

RM1 Channelisation - straightening of channels (2008)	2b Not At Risk
RM2 Embankments - preventing spillover onto floodplains (2008)	2b Not At Risk
RM3 Impoundments - reservoirs	2b Not At Risk
RM4 Water Regulation - artificial control of flows	2b Not At Risk
RMO Morphology Overall - Worst Case (2008)	2b Not At Risk

Q Value/LAND USE or Point/Diffuse RISK SOURCES

QPD Q class if available, OR ELSE worst of Land Use Type or Point and Diffuse (2008)	2b Not At Risk
--------------------------------------------------------------------------------------	----------------

HYDROLOGY RISK SOURCES

RHY1 Water balance - Abstraction of water vs natural recharge	2b Not At Risk
---------------------------------------------------------------	----------------

OVERALL RISK

RA Overall Risk - Worst Case of the above (2008)	2b Not At Risk
--------------------------------------------------	----------------

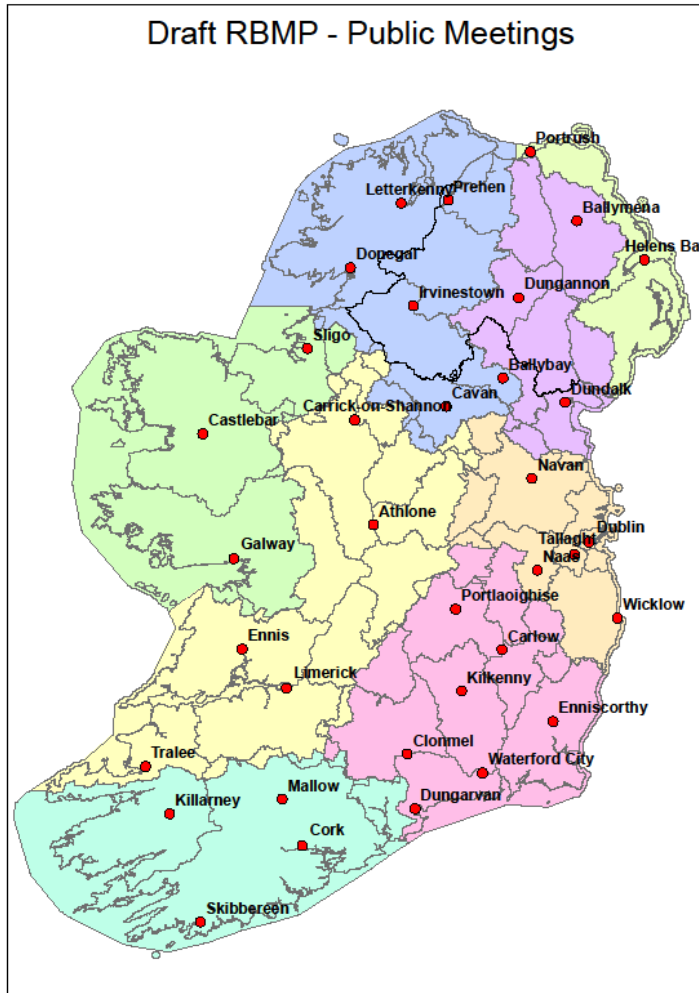
Risk

By 'risk' we mean the risk that a waterbody will not achieve good ecological or good chemical status at least by 2015. To examine risk the various pressures acting on the waterbody were identified along with any evidence of impact on water status. Depending on the extent of the pressure and its potential for impact, and the amount of information available, the risk to the waterbody was placed in one of four categories: 1a at risk; 1b probably at risk; 2a probably not at risk; 2b not at risk. Note that '2008' after the risk category means that the risk assessment was revised in 2008. All other risks were determined as part of an earlier risk assessment in 2005.

You can read more about risk assessment in our 'WFD Risk Assessment Update' document in the RBMP document library, and other documents at www.wfdireland.ie (Directory 30 Risk Assessments).

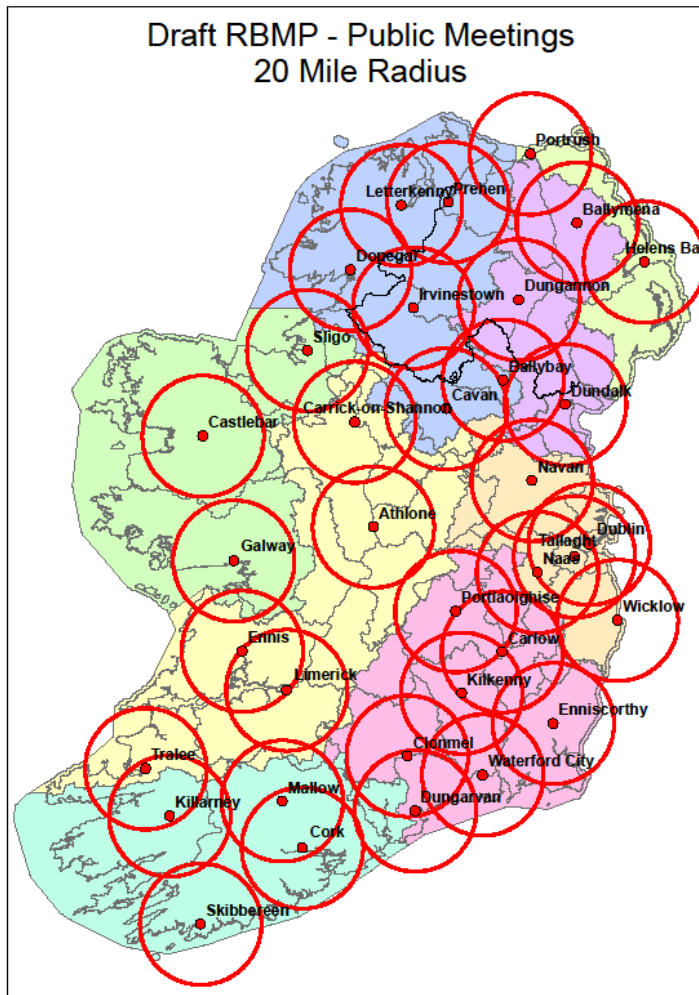
Date Reported to Europe: 22/12/2008
Date Report Created 15/05/2009

Public Information Meetings



Liaison North/South and cross-RBD to coordinate a series of public information events throughout all RBDs. Advertised in local and national media. Timing and location to facilitate public attendance. Cross representation by agency and project personnel at events North and South.

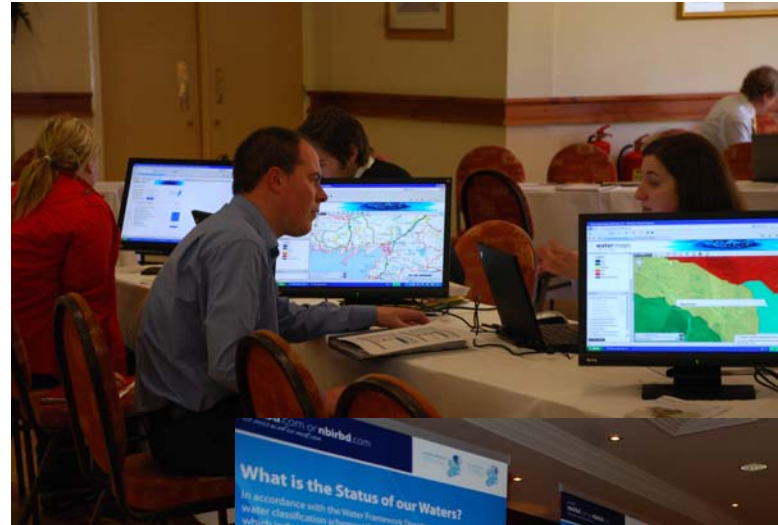
Public Information Meetings



Liaison North/South and cross-RBD to coordinate a series of public information events throughout all RBDs. Advertised in local and national media. Timing and location to facilitate public attendance. Cross representation by agency and project personnel at events North and South.

Most public within 30km of one or more events.

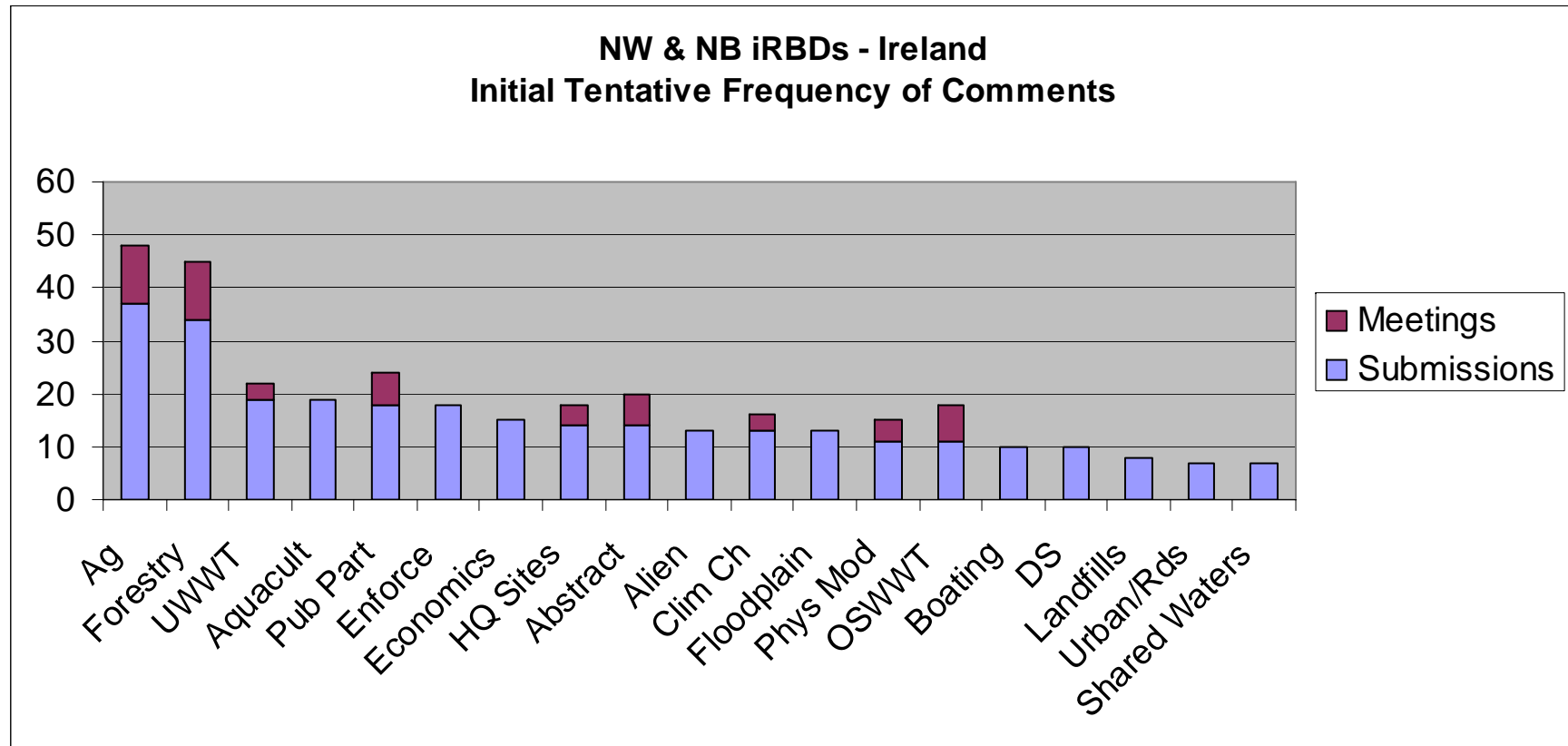
Public Information Meetings



Submissions received

- Substantial written submissions from public bodies, eNGOs and sectoral groups (In Ireland 400 nationally / 83 NW&NB)
- Few from individual members of Public - Comments recorded at Information Events
- Many national cross-cutting issues with local inputs reflecting regional activities/pressures
- RBDs liaising to collate Issues for compilation into RBD digests

Submissions received (Caveat Emptor!)



Future Challenges

- Need stakeholder/public buy-in for success. Accessibility to complex geospatial information — local level
- Facilitate input through mechanisms for feedback and engender an ethos of partnership and sense of ownership while managing expectations. TRUST
- DEHLG have commissioned Sustainable Water Network (SWAN - umbrella network of national and local environmental groups) to produce a blueprint for a Public Awareness Campaign. SWAN have assessed baseline attitudes to Water and have used this to identify key sectors and appropriate messages. Also the mechanisms for msg delivery in each sector
- Economic constraints - Difficult economic climate for securing future funding. Vital to ensure resources within public service are used efficiently - commitment to achieving WFD objectives

Thank You
Go raibh maith agaibh
Tack så mycket



Errigal and Loch an Ghainnimh, Co Donegal