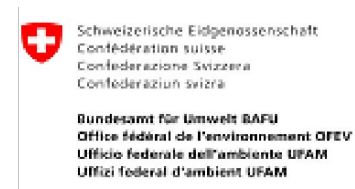




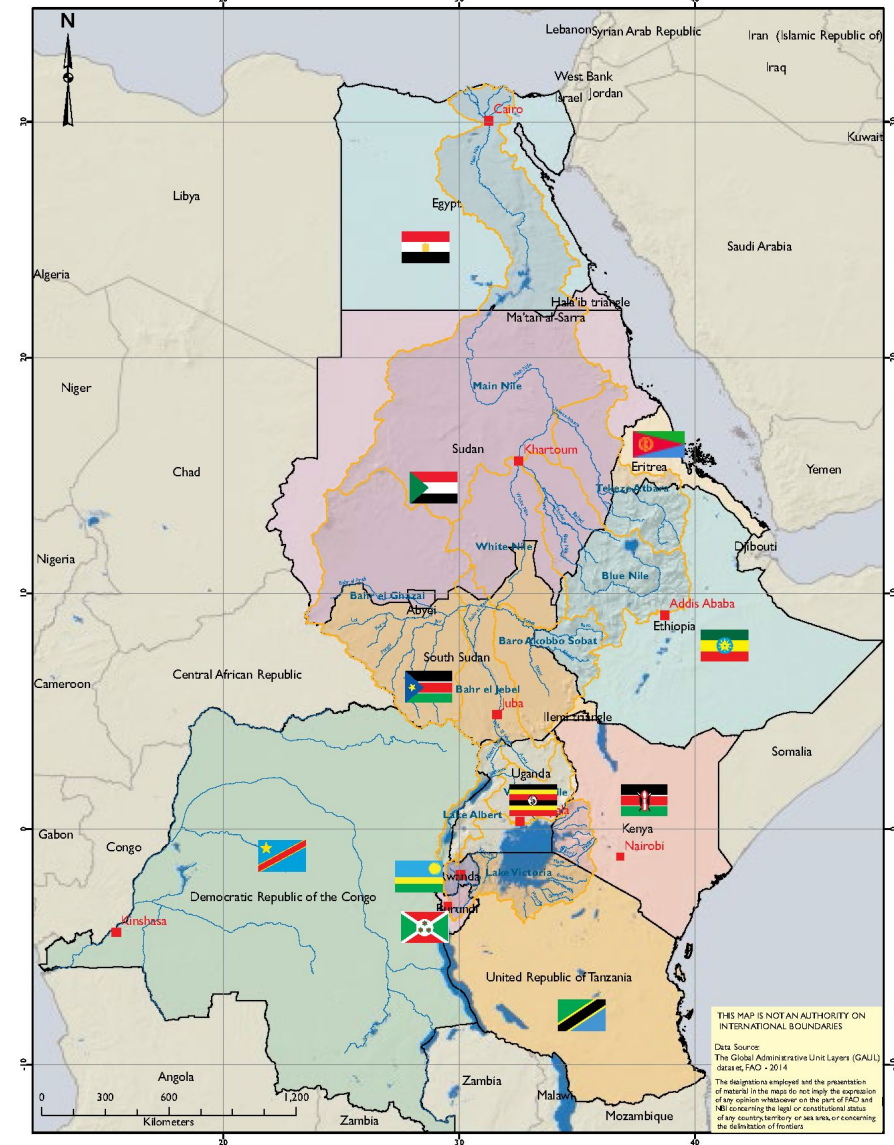
Conserving Biodiversity in the Nile Basin Transboundary Wetlands

Michael Kizza



The Nile Basin

- Source of livelihood for > 250m people in 11 countries (500m in countries)
- Area - 3.2 m sq km
- Most parts of the basin is arid/semi-desert
- Over 80% flow comes from a small basin part that is prone to regular climate extremes
- Most current uses are in the d/s arid/semi-desert part
- Most undeveloped part is upstream in water source countries
- Home to fragile ecosystems and world-class environmental assets including wetlands



Nile Basin Initiative (NBI)



Burundi



DR Congo



Egypt



Ethiopia



Kenya



Rwanda



South Sudan



The Sudan



Tanzania



Uganda

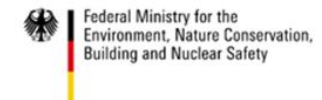
GOAL 4: ENVIRONMENTAL SUSTAINABILITY (of the NBI 10 year Strategy 2017-2027)

- ***Strategic Direction 4.1: Ensure Sustainable management of wetlands of transboundary significance***
- ***Strategic Direction 4.2: Maintain river and lake ecosystems***

With support of

giz Deutsche Gesellschaft
für Internationale
Zusammenarbeit (GIZ) GmbH

On behalf of



of the Federal Republic of Germany



NBI's 2-level approach for 'Wetlands Work'

Basin wide level
(Nile Sec)

Knowledge for ecosystem based sustainable management of wetlands of TB significance is strengthened

TB Wetlands level
(Nelsap)

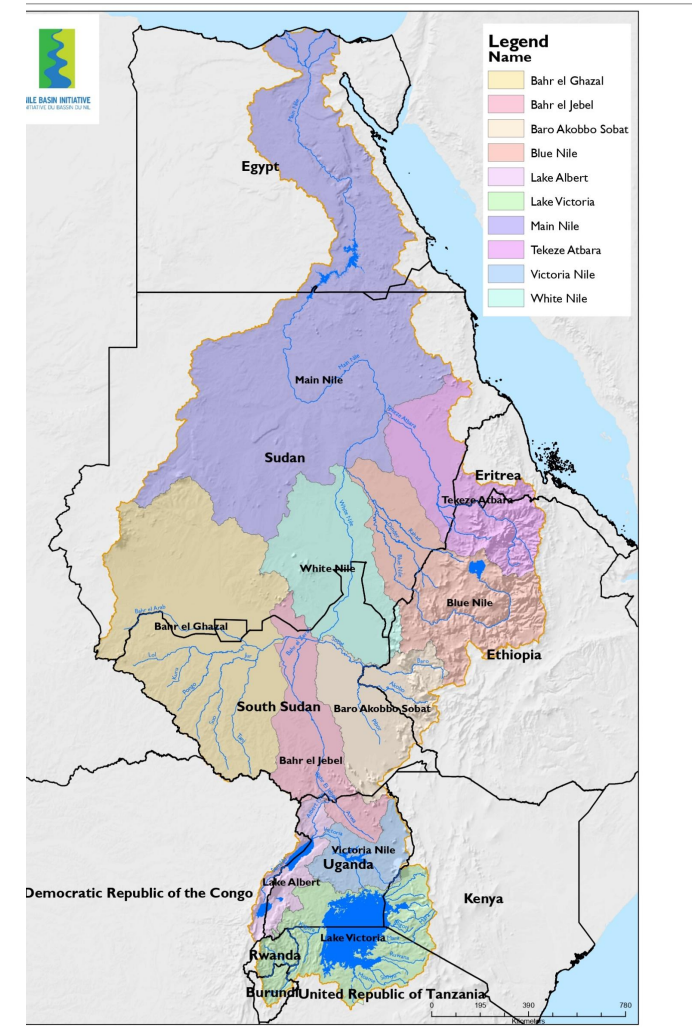
For selected TB sub-basins plans for the management of wetlands of TB relevance are in place and being implemented



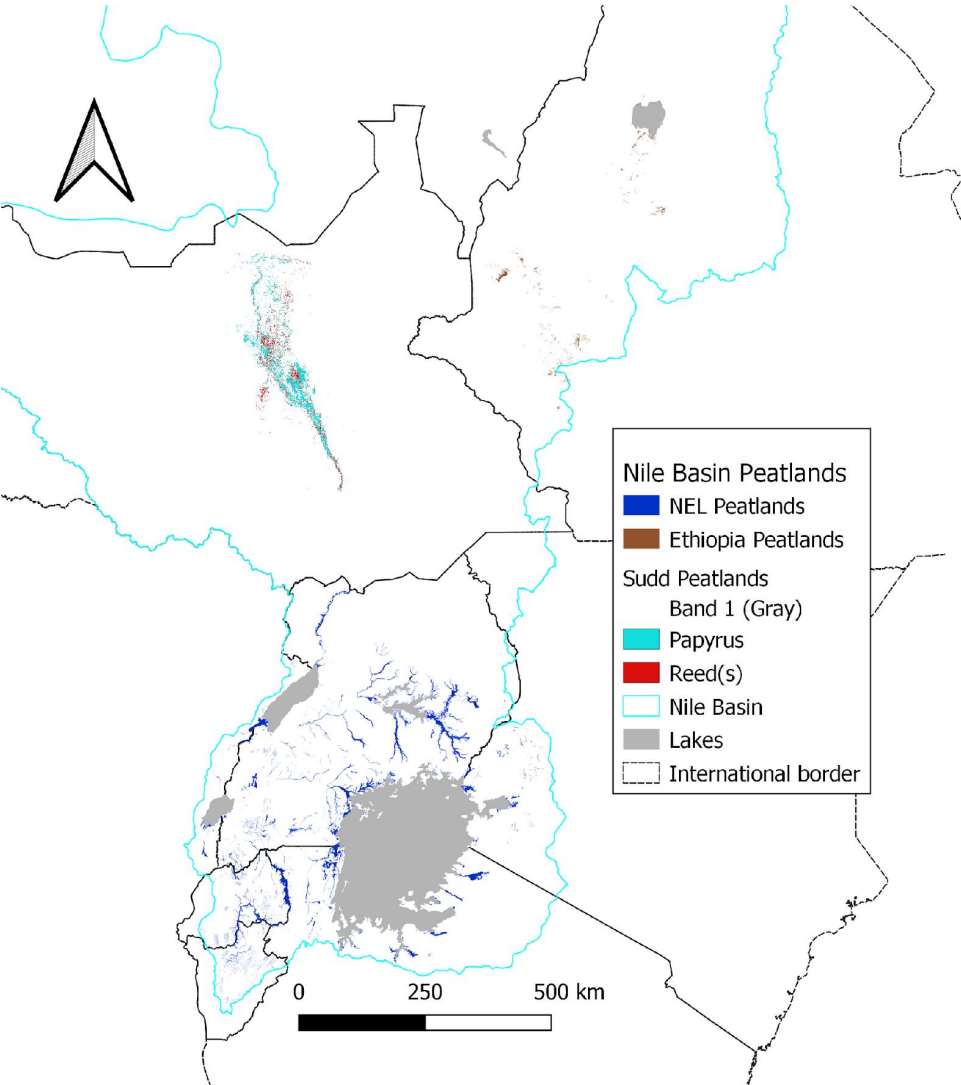
Basin Wide Approach

- 1. Inventory and mapping** (e.g. Wetland Atlas) - monitoring system for the status of wetlands
- 2. Baseline studies** – wetland ecosystem services and their integration in Nile hydrology, the economics of wetlands and their potential as green infrastructure are in place
- 3. Strategy and plan** – Updated Wetland Management Strategy (2022) - integration of sustainable management of wetlands of transboundary significance in river basin planning in the Nile Basin

Overview of the Nile Basin and its Wetlands



Peatlands distribution



- Total area = 3 Mha (Million hectares)
- Three subsets:
 - A- NEL peatlands: 1.3 Mha (40 %)
 - B- Sudd: 1.6 Mha (55 %)
 - C- Ethiopian highlands: 0.1 Mha (> 5 %)

Strengthening the Knowledge Based



- Reports available at: <http://ikp.nilebasin.org>

TB Wetlands Level (sub-basin)





**SEMLIKI DELTA
TRANSBOUNDARY WETLAND MANAGEMENT
PLAN**



On behalf of:
Federal Ministry
for the Environment, Nature Conservation
and Nuclear Safety
of the Federal Republic of Germany



**SANGO BAY - MINZIRO
TRANSBOUNDARY WETLAND MANAGEMENT
PLAN**



On behalf of:
Federal Ministry
for the Environment, Nature Conservation
and Nuclear Safety
of the Federal Republic of Germany



**SIO-SITEKO
TRANSBOUNDARY WETLAND MANAGEMENT
PLAN**



On behalf of:
Federal Ministry
for the Environment, Nature Conservation
and Nuclear Safety
of the Federal Republic of Germany

Adopted Management Plans

A participatory process

- Focus on development of Cross Border Wetland Committees which ensure the implementation of the Management Plans
- Interinstitutional bodies where Wetlands – Water – Biodiversity and Climate Change officers from both countries are represented



Implementation of Measures

- Focus on Nature Based Solutions (Examples: Green Borders and Wetland Restoration Measures)



Titel of the presentation

WAY FORWARD – IMPLEMENTATION AT THE NATIONAL LEVEL

Example of Peatlands Action – moving towards implementation

- Government of **Uganda** (MoWE – Wetlands Department) is working on **operationalizing the peatlands NDC target**
- Core elements of the proposal include:
 - A Peatlands National Strategy
 - In depth Peatlands mapping and assessment of mitigation potential (**including cross-border**)
 - Development of an MRV system accounting for peatlands GHG emissions
 - Wetland Restoration and Peatland Rewetting in hot spots projects (**including cross-border**)
 - Enhancement of value chains and paludiculture (eg. for sustainable papyrus use)



Thank you

 Email address: mkizza@nilebasin.org

 Website: www.nilebasin.org

 Twitter: [@nbiweb](https://twitter.com/nbiweb)

